



New Bond Street, London W1S

Price £995 per week - Furnished







Description

A recently refurbished second floor apartment, situated in the heart of Mayfair on New Bond Street. The property has contemporary furniture throughout and comprises a spacious open plan living room complete with an integrated kitchen and solid wood flooring, two large double bedrooms, and a modern family bathroom.

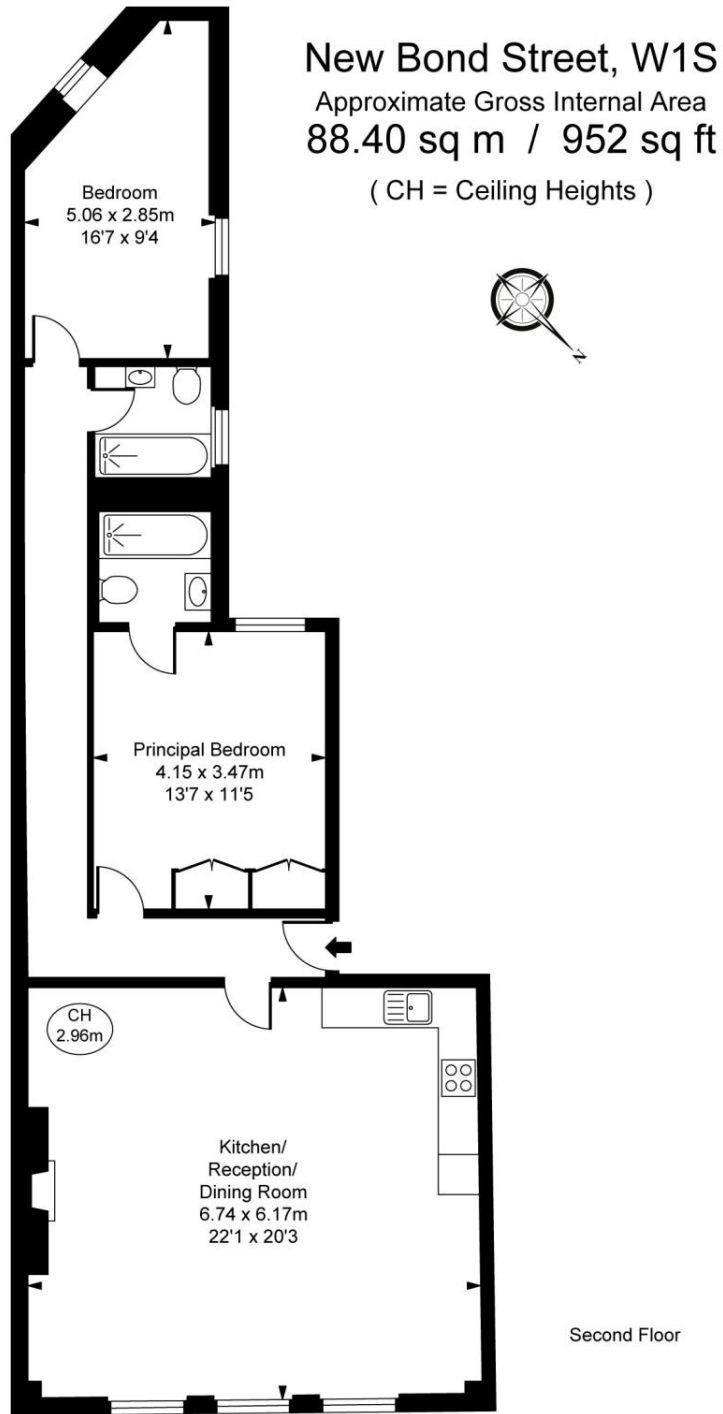
New Bond Street runs between Oxford Circus and Green Park and the property benefits from the outstanding amenities of Bond Street, Oxford Circus and Green Park.

Council tax band: G. Rent is payable on a monthly basis, and you may be required to pay more than a month's rent in advance for tenancies with annual rents exceeding £100,000. You will be required to pay a 1 week holding deposit following a successful offer. Tenancies with annual rents up to £50,000 will require a 5 weeks' security deposit, while those exceeding this threshold will require a 6 weeks' deposit. Utility bills, council tax, telephone line and broadband are not included in the rent. As well as paying the rent, you may also be required to make some additional permitted payments. If your tenancy does not qualify as an APT, additional fees may apply. Please visit jll.co.uk/fees for details of fees that may be payable when renting a property. To check broadband and mobile phone coverage please visit Ofcom here ofcom.org.uk/phones-telecoms-and-internet/advice-for-consumers/advice/ofcom-checker

- Available Now
- Solid Wood Flooring
- Furnished
- Two Double Bedrooms
- Two Bathrooms
- 88sq m / 952sq ft
- Amazing Location
- Council tax: Band G
- Deposit amount: £5,970
- A holding deposit of 1 week's rent is payable

Floorplan

937 sq ft | 87 sq m



This plan is not to scale. It is for guidance and not for valuation purposes.
All measurements and areas are approximate only, and have been prepared in accordance with the current edition of the RICS Code of Measuring Practice.
© Fulham Performance

Mayfair and Marylebone
St George Street,
London W1S 2FQ
+44 207 399 5550
mayfair@jll.com

Urban living, your way.

jll.co.uk/residential

© 2019 Jones Lang LaSalle IP, Inc. All rights reserved. All information contained herein is from sources deemed reliable; however, no representation or warranty is made to the accuracy thereof.

