



Huddleston Road, N7

£675,000

Set over the top two floors of an end of terrace Victorian house, a very well-presented three double bedroom, two bathroom upper maisonette, located on a highly sought after road in Tufnell Park.

Huddleston Road is a quiet, tree-lined street. The area has a vast selection of independent shops, cafés and restaurants, and Tufnell Park station (Northern line) is a short walk away.

Features

- Three Bedrooms
- Two Bathrooms
- Share of Freehold
- Upper Maisonette
- Garage
- Great Transport Links



Huddleston Road, N7

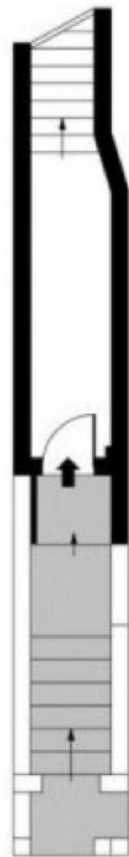
This recently renovated Victorian upper maisonette offers a perfect blend of period charm and modern living. Upon entering on the first floor, you're welcomed into a spacious layout featuring a separate, well-appointed kitchen, a generous reception and dining room, and a stylish bathroom.

Upstairs, the top floor hosts three well-proportioned bedrooms, including a primary bedroom situated at the rear of the property. A second contemporary bathroom completes this level.

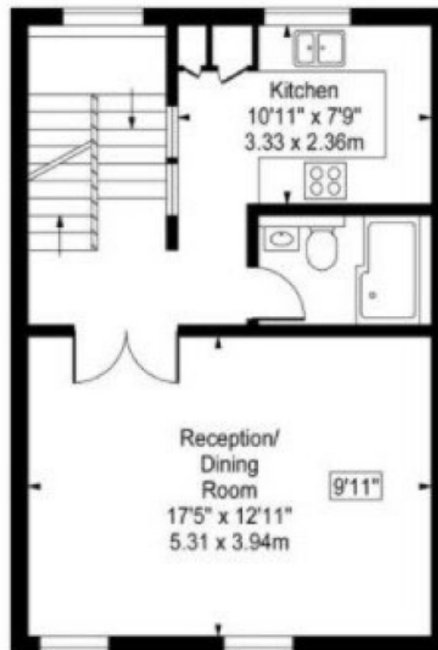
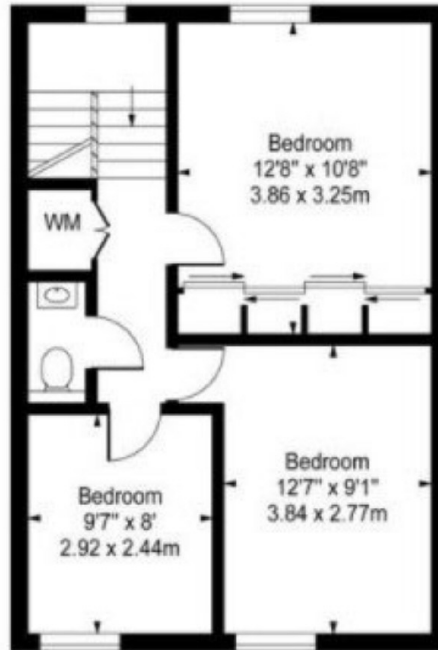


Huddleston Road, London, N7

Huddleston Road, N7



Ground Floor
Entrance



Approx Gross Internal Area 992 Sq Ft - 92.16 Sq M