

VALE REAL

SIGNATURE

VALE DO LOBO





Developed: Staunch
Architecture: Plan Associated Architects
Marketing: Triplesky

2025© Staunch All rights Reserved

THE OPPORTUNITY	Introduction	3
	Key Advantages	4
	Market Validation	5
	Location & Context	6
	Portfolio Overview	7
	Plot Details	8
	Financial Overview	10
<hr/>		
THE PROJECT	Design Concept	13
	Render Views	14
	Materiality & Finishes	18
	The Architects	19
<hr/>		
THE LOCATION	Living in Portugal	21
	Location Map & Points of Interest	22
	Restaurants & bars	23
	Vale do Lobo Tennis	24
	A Premier Golf Destination	25
<hr/>		
ABOUT STAUNCH	Development Ethos	27
	Past & Current Projects	28



INTRODUCTION

Vale Real Signature by Staunch is an exclusive development of 12 luxury plots in the heart of Vale do Lobo, Algarve. Designed for discerning buyers seeking architectural excellence and resort living, this project is a limited opportunity to secure a modern residence in Portugal's most iconic coastal enclave.

A rare chance to own a plot in one of Portugal's most iconic resorts.

KEY ADVANTAGES & INVESTMENT INSIGHT

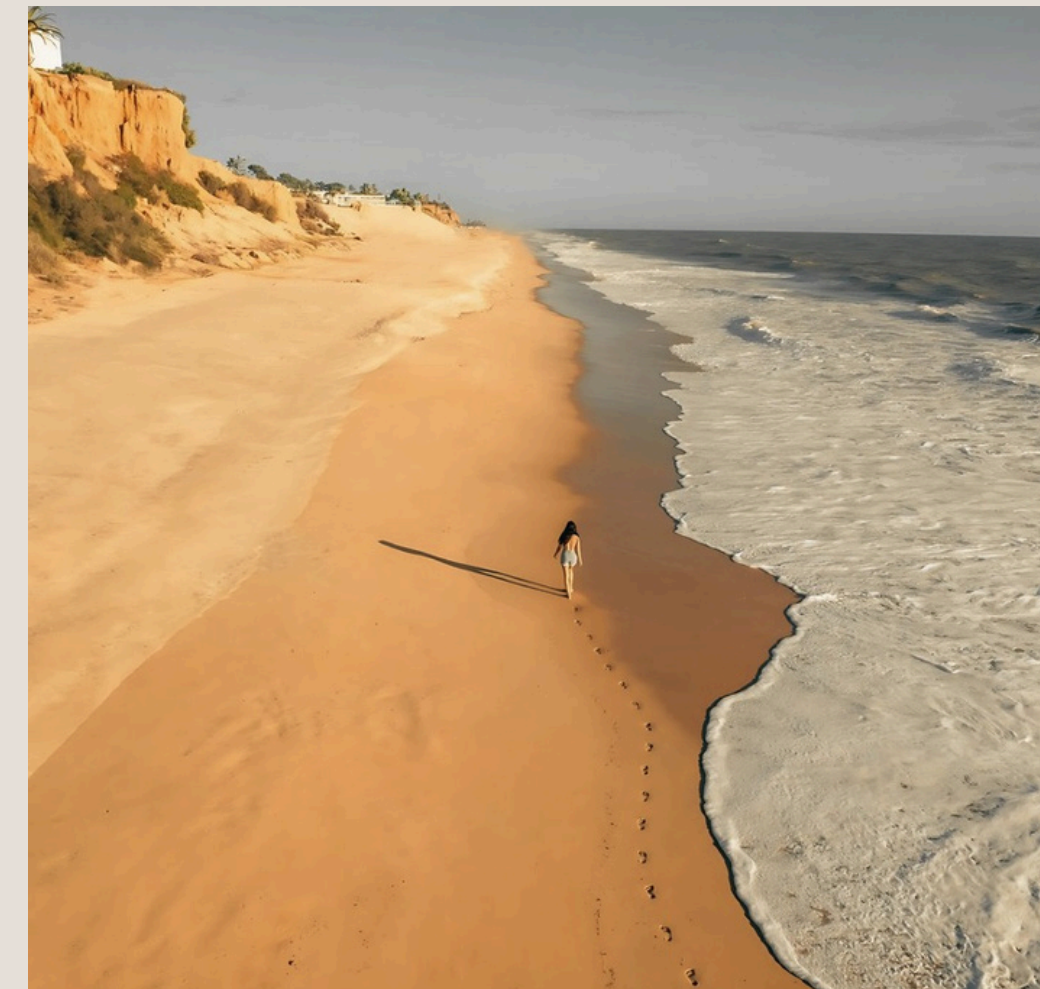
Exceptional value and flexibility in a
sold-out zone of Vale do Lobo.



Located in the prestigious Vale Real area, which has seen over 100 villa plots successfully sold around holes 5 to 11 of the Royal Course.



12 available plots enjoy direct golf course frontage.



Privately tucked into a quiet cul-de-sac within walking distance of the beach, Tennis Academy, and the vibrant resort square.



Architecturally designed projects

MARKET VALIDATION

- OVER 100 SURROUNDING PLOTS SOLD HISTORICALLY IN THE VALE REAL AREA

- STRONG TRACK RECORD OF RESALE VALUE APPRECIATION AND BUYER DEMAND

- GOLF-FRONT PROPERTIES REMAIN AMONG THE MOST LIMITED AND VALUABLE IN VALE DO LOBO

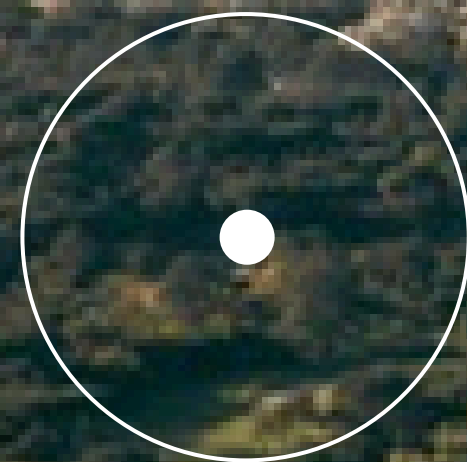
- COMPARABLE PLOTS TRADING BETWEEN €1,600 – €2,000/M²

- COMPLETED VILLAS ACHIEVING €10,000 – €15,000/M² ON RESALE

- NO FURTHER LAND RELEASE OF THIS CALIBRE EXPECTED IN THE NEXT DECADE.

LOCATION & CONTEXT

Signature lies between holes 5–11 of the Royal Course, combining privacy, accessibility, and panoramic golf views. Positioned within walking distance to the Vale do Lobo Praça and beach, the area is among the most desirable in the Algarve.



PORTFOLIO OVERVIEW

Plot	Area (m²)	Asking (€M)
4	1,341	2.75
5	1,234	3.50
6	1,366	3.50
8	1,372	2.50
9	1,239	2.50
10	1,251	2.50
12	1,500	2.75



PLOT DETAILS

Executive Investment Summary

Five privately owned golf-front plots located within Vale Real, Vale do Lobo – the last developable land inside one of the Algarve’s most exclusive enclaves. Acquiring this collection secures full control of the final phase, with flexibility to develop, resell, or hold for long-term capital appreciation.

MULTIPLE
INVESTMENT AND
EXIT STRATEGIES
AVAILABLE.



Approximately 6,700 m² total plot area across five serviced plots.



Direct golf frontage and walking distance to the beach and Praça.



Fully serviced plots with infrastructure complete and ready to build.



Rare opportunity for block acquisition below retail value

PLOT DETAILS

7 exclusive plots, with golf views, sunlight, and privacy — now available with flexible purchase and build options.

PLOT	PLOT AREA	MAX. IMPLEM.	MAX. BASEMENT AREA	MAX. GROUND FLOOR	MAX. FIRST FLOOR	MAX. CONSTRUCTION	WITH BASEMENT
4	1341	295	295	295	174	469	764
5	1561	343	343	343	157	500	843
6	1408	319	319	319	181	500	819
8	1372	302	302	302	178	480	782
9	1239	273	273	273	161	434	707
10	1251	275	275	275	163	438	713
12	1500	330	330	330	170	500	830

A man and a woman are in a field of tall grass at sunset. The man is standing, wearing a white long-sleeved shirt and light-colored trousers, with his hand to his forehead as if shielding his eyes from the sun. The woman is sitting on a light blue cushioned bench, wearing a grey blazer and light-colored trousers, looking up at the sky. A small white box with a red logo is on the bench next to her. The background is a warm, golden sunset over a field of tall grass.

THE PROJECT

DESIGNED BY PLAN

PLAN's approach blends timeless elegance with a modern understanding of space, form, and environment—making this proposal not just ready to build, but ready to live.

CONCEPTUAL RENDERING













MATERIALS & TEXTURES

The homes at Vale Real Signature are crafted with a refined material palette that draws inspiration from the Algarve's natural beauty and architectural heritage—balancing simplicity, elegance, and environmental harmony.

- White rendered wall surfaces reflect the traditional Algarve aesthetic, bringing lightness and purity to the architecture.
- Sustainable, native planting integrates each home into its golf-side setting, softening edges and enhancing privacy.
- Accents of black metalwork, paired with grey plaster finishes and tonal variations of grey, add depth, contrast, and architectural clarity.
- Natural wood detailing and vertical panelling introduce warmth and texture, creating subtle shadow play and a sense of movement across façades.

A timeless palette of natural tones, crafted for light, landscape, and modern coastal living.



PLAN ARCHITECTS

With over 35 years of experience and international recognition, including the Architizer A+ Award and the CNBC International Property Award, PLAN Architects is a multidisciplinary firm known for bespoke, sustainable design at the highest level. Their deep local knowledge and global perspective bring timeless elegance, functionality, and community-focused design to every project.

Award-winning architects shaping
visionary spaces in harmony with nature.

A woman is seated in the driver's seat of a golf cart, looking out towards a man who is in the middle of a golf swing on a green. The scene is set on a golf course with a large body of water and a cloudy sky in the background. The word "LOCATION" is overlaid in large white letters across the center of the image.

LOCATION

LIVING IN PORTUGAL

Portugal offers an exceptional quality of life, sunny, safe, and welcoming. With its political stability, accessible residency pathways, and favourable tax environment, it has become a preferred destination for global investors, families, and lifestyle-driven homeowners.

Whether you're relocating or investing, Portugal provides both peace of mind and long-term opportunity.

Residency, safety, and lifestyle. Portugal offers it all.



Top 10 Reasons to Live in Portugal

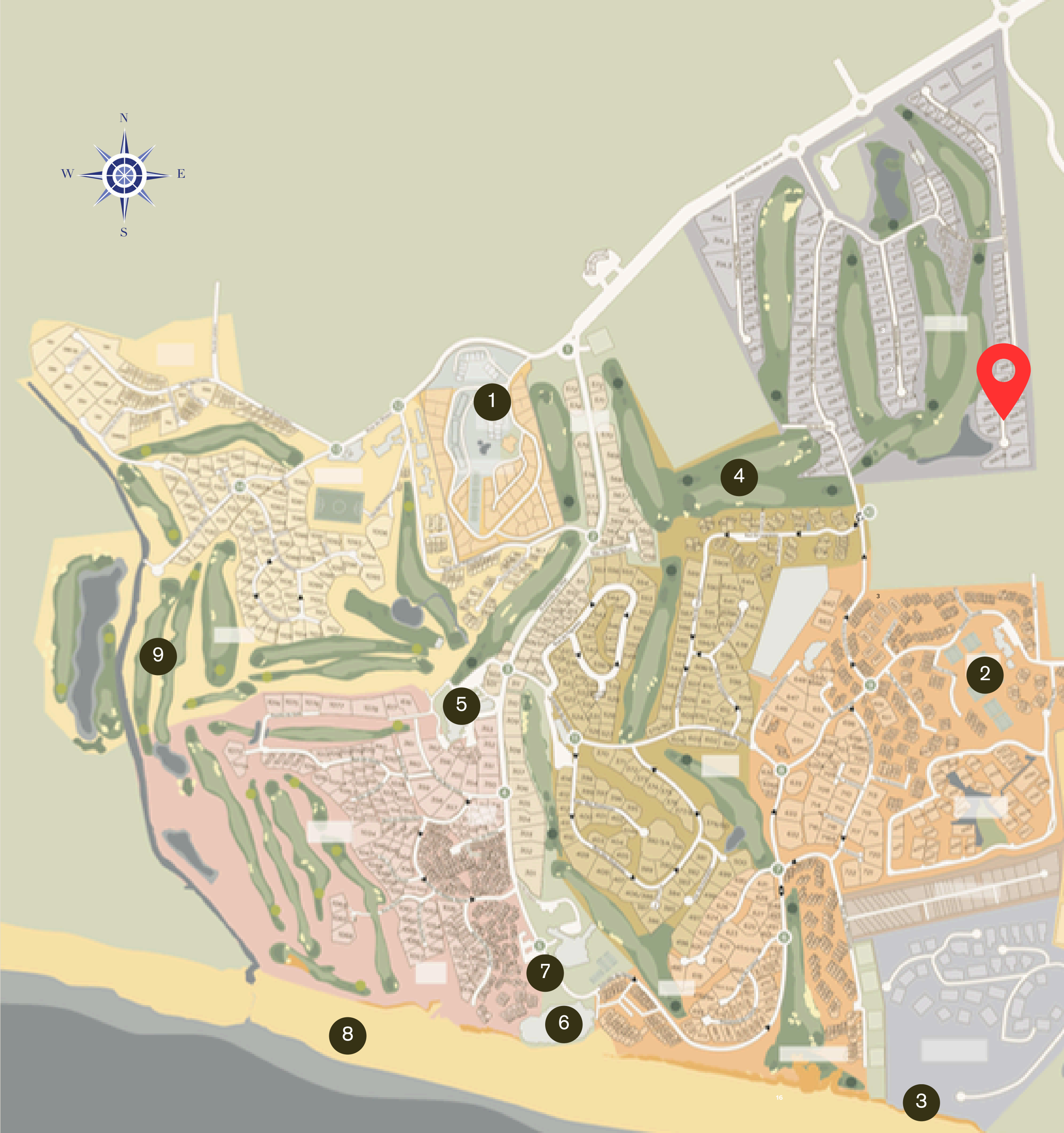
- Political Stability
- Affordable State Healthcare
- Low Gun Crime
- Safer Food & Water
- Easy Residency Visa Pathways
- Crypto-Friendly Tax Environment
- Five-Year Path to EU Citizenship
- Schengen Zone Access
- Diverse Natural Landscapes
- Tolerant & Progressive Society

LOCATION MAP & POINTS OF INTEREST

Vale Real is a prestigious and tranquil enclave within Vale do Lobo, nestled between the Royal Golf Course and the Tennis & Padel Academy. Surrounded by natural greenery and mature landscaping, it offers a rare combination of privacy, accessibility, and direct connection to the resort’s key lifestyle amenities.

KEY DISTANCES FROM THE PLOTS:

- | | | |
|-----|-------------------------------|--------|
| 1. | Medical Center & Supermarket | 1 min. |
| 2. | Tennis & Padel | 5 min. |
| 3. | Marias Beach Restaurant | 6 min. |
| 4. | VDL Royal Golf Course | 6 min. |
| 5. | Gym, Post Office, Information | 1 min. |
| 6. | Bars & Restaurants | 4 min. |
| 7. | Partee & U&Co Restaurant | 6 min. |
| 8. | Vale do Lobo Beach | 8 min. |
| 9. | VDL Ocean Golf Course | 7 min. |
| 10. | Faro International Airport | 28 min |



RESTAURANTS & BARS

Vale do Lobo offers a diverse and vibrant dining scene, where relaxed beachfront cafés, elegant fine dining, and lively evening spots come together in one walkable resort. Whether you’re enjoying a long lunch by the sea, cocktails at sunset, or dinner under the stars, every experience is curated with style, quality, and atmosphere.

Residents and guests can enjoy a range of culinary options, all within minutes from home.

Lobos Restaurant

Nestled in the prestigious Dunas Douradas, Lobos emerged from a vision to create more than just a restaurant



El Ta’koy

Curated by renowned Chef Luis Pous, the concept takes the bold, authentic flavours of Hawaiian street food-reimagined and refined.



U&Co

A chic beachfront restaurant offering contemporary Mediterranean cuisine with a laid-back, stylish vibe—perfect for all-day dining by the sea.



Smash

A relaxed, family-friendly spot by the Tennis Academy, serving fresh bowls, burgers, smoothies, and snacks in a bright, social atmosphere.



Spikes

There are no words to describe the versatility of Spikes: Restaurant, Clubhouse, Cocktail Bar, Shisha Lounge & Events Venue.





VALE DO LOBO TENNIS & PADEL ACADEMY

The Vale do Lobo Tennis & Padel Academy is one of the Algarve's premier sports facilities, offering a dynamic blend of high-performance training, social play, and community atmosphere.

Set within lush, landscaped grounds, the centre features **10 tennis courts** (including hard and synthetic grass) and **6 padel courts**, alongside a clubhouse, pro shop, and café. It hosts regular tournaments, private coaching sessions, and social events throughout the year.



A world-class facility for sport, wellness, and connection — just minutes from home.

A PREMIER GOLF DESTINATION

The Algarve is widely considered one of Europe’s top golf destinations—with over 30 championship-level courses stretching along the coast. From the doorstep of Plots 48 and 49, some of the region’s finest fairways are just minutes away.

Live beside one of Europe’s most celebrated fairways — where every round feels like a getaway.



Quinta do Lago South,
North & Laranjal



San Lorenzo Golf Club



Vale do Lobo Royal & Ocean



Pinheiros Altos



Victoria & Millennium





ABOUT STAUNCH



ABOUT STAUNCH

Staunch Developments is a boutique developer with a reputation for delivering elegant, design-led homes in Portugal's most prestigious locations. With deep local knowledge and a design-first approach, Staunch has completed a series of standout properties—each tailored to site, lifestyle, and vision.

Every home is built with precision, intention, and a quiet kind of luxury that speaks through detail rather than excess. From Quinta do Lago to Vale do Lobo, our projects reflect an ethos of balance: between architecture and environment, between form and function.

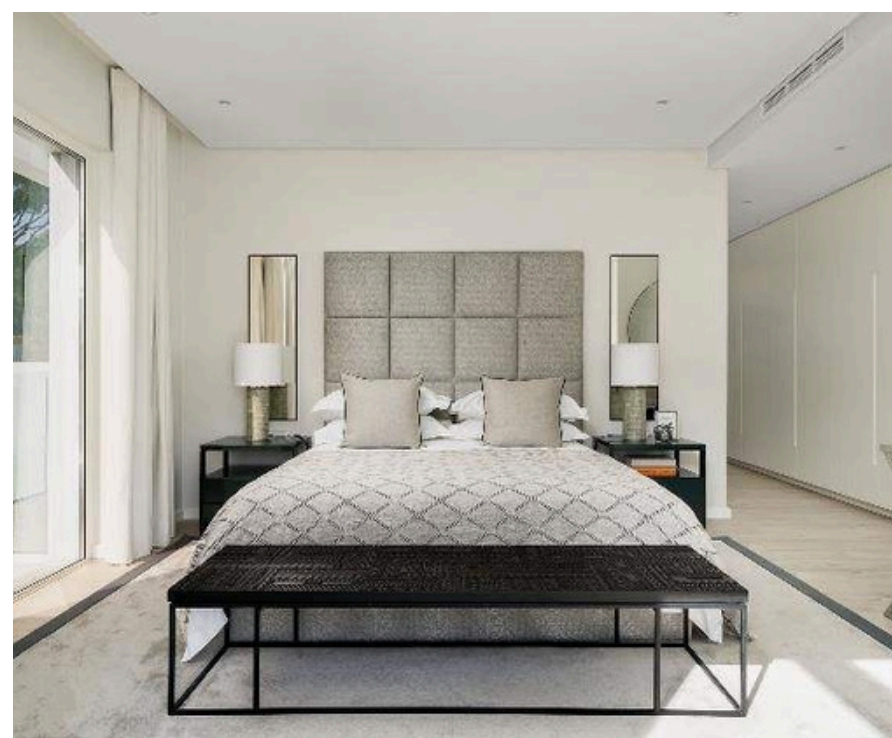
Timeless architecture,
made personal.



PREVIOUS PROJECT

A STATE-OF-THE-ART CONTEMPORARY VILLA

Built in 2020, the brief was to create a home that combined indoor and outdoor living and accommodation to allow its use throughout the whole year. Providing bright open spaces to evoke a sense of tranquility, in a modern home with the principal rooms orientating towards the pool and garden area complemented by its breathtaking natural scenery.



LOCATED IN VALE DO LOBO



PREVIOUS PROJECT CHAPTERS QUINTA DO LAGO

Built in 2020, the brief was to create a holiday home that could also accommodate friends and family comfortably. The design was to harmonize contemporary and vernacular Portuguese architecture and to create a tranquil family living space, with full leisure facilities including a pool, spa, gym treatment room, cinema, and games rooms.

Chapters held the record sale price for an individual property in Quinta do Lago until late 2021.



LOCATED IN QUINTA DO LAGO



PREVIOUS PROJECT CASA MUFASA

A plot situated within the prestigious Vale do Lobo golf and beach resort, with stunning sea views & a contemporary project to build an open-plan residence designed to suit the outdoor Algarve lifestyle factoring in family living. The development included plans for a 6-bedroom home, with features such as a swimming pool, home cinema, gym, sauna, and a 3-car garage.



LOCATED IN VALE DO LOBO



WWW.STAUNCH.PT

VALE REAL

SIGNATURE

VALE DO LOBO

Staunch. 2025 All rights reserved.