



MOORE PARK ROAD, SW6

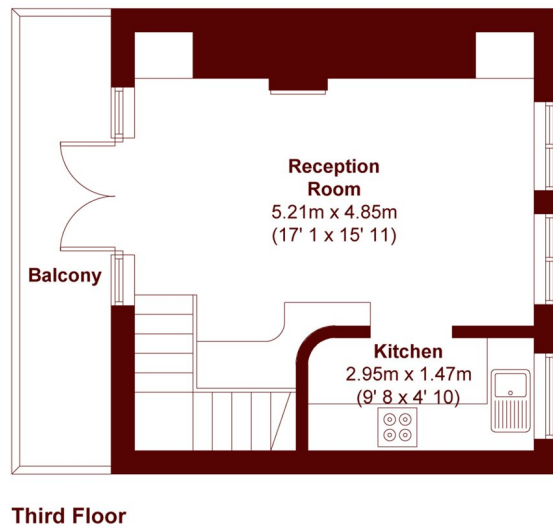
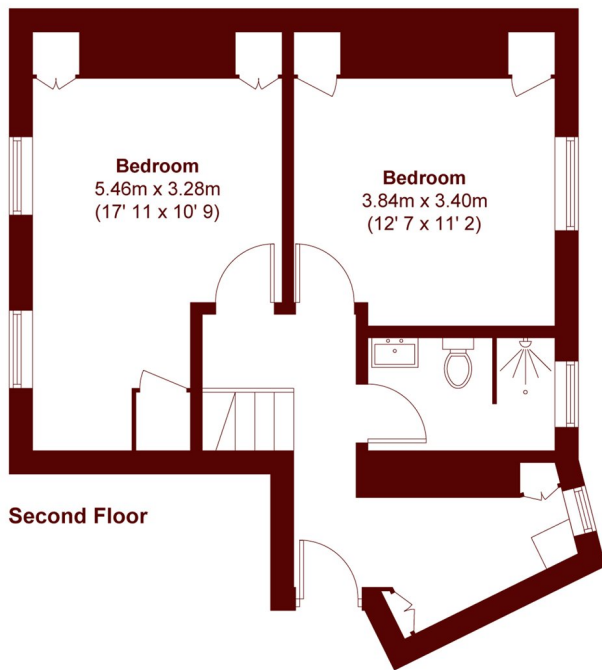
£650,000

An ideally positioned, top-floor flat located on the Moore Park Estate. This property comprises of two generous double bedrooms, alongside an open plan kitchen and living space.

Two double bedrooms
Natural light
Desirable Location

Balcony
Close to tube
Energy rating: d

STEP INSIDE MOORE PARK ROAD



APPROX .GROSS INTERNAL FLOOR AREA = 783 SQFT / 72.7 SQM
APPROX .GROSS EXTERNAL BALCONY AREA = 63 SQFT / 5.9 SQM

Fulham
020 7736 9822

Energy Rating: D We aim to make our particulars both accurate and reliable. However, they are not guaranteed; nor do they form part of an offer or contract. If you require clarification on any points then please contact us, especially if you're traveling some distance to view. Please note that appliances and heating systems have not been tested and therefore no warranties can be given as to their good working order

**MARSH &
PARSONS**