

sansome
& george



Garrett Close, Kingsclere

£160,000

Garrett Close

Kingsclere, Newbury

Sansome & George - Stunning 2-bedroom Over 55's Retirement bungalow located in Kingsclere Village. This modern property offers a perfect blend of style and comfort, ideal for those seeking accessible living in a peaceful setting. The bungalow boasts a spacious layout with Entrance Hall, kitchen, living room, and two bedrooms and Shower room. This property is ideal for those seeking a tranquil lifestyle in a close-knit community. Don't miss the opportunity to make this charming bungalow your new home. Contact us today to arrange a viewing and experience the beauty and convenience this property has to offer.

Council Tax Band - D

Council - Hampshire (Basingstoke & Deane)

Lease Term Remaining 64 years

Service Charge - £3,035.06 (which includes Building insurance)

Tenure: Leasehold

EPC Energy Efficiency Rating: E

EPC Environmental Impact Rating: F







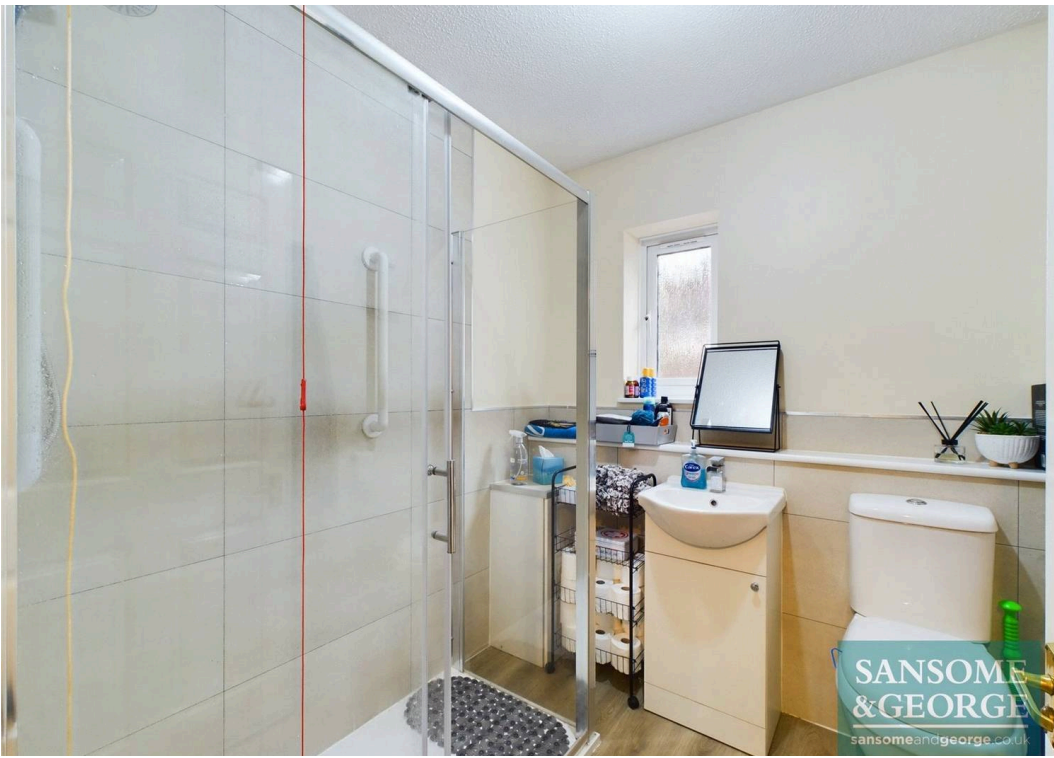
Garrett Close

Kingsclere, Newbury

- 2 Bedroom Retirement Bungalow
- Popular village location
- Entrance Hall
- Kitchen
- Living room with sliding patio doors
- 2 Bedrooms
- Shower Room



**sansome
& george**





Approximate total area⁽¹⁾
598.05 ft²

(1) Excluding balconies and terraces

While every attempt has been made to ensure accuracy, all measurements are approximate, not to scale. This floor plan is for illustrative purposes only.

Calculations are based on RICS IPMS 3C standard.





Sansome & George Basingstoke Office

Sansome & George, 41-43 Winchester Street - RG21 7EF

01256 807 111 • • www.sansomeandgeorge.co.uk/