



27 Park Road, Lower Compton, Plymouth, Devon, PL3 5DR



# Price £210,000

Situated in the desirable and quiet area of Lower Compton and being offered to the market with no onward chain is this 2-bedroom semi-detached converted bungalow.

Accessed via a set of steps, this thoughtfully converted and elevated bungalow reveals far more space than first meets the eye. Stepping through the entrance, you're welcomed into a central hallway that neatly connects the home's ground floor, creating a natural flow between the living and sleeping areas.

To the front, the lounge/diner stretches the full width of the property, a bright and inviting space enhanced by a bay window that draws in plenty of natural light and patio doors to the rear garden. It's a room that easily accommodates both relaxed evenings and more social gatherings, with a comfortable sense of proportion throughout.

The kitchen sits to the rear, practical and well-positioned, offering a clear working layout with room for everyday dining or informal use. Adjacent to the hallway, the bathroom is conveniently placed, serving the ground floor with a compact yet functional design.

Also on this level is Bedroom 2, a well-sized double room — ideal for guests, family, or even a home office if desired.

A staircase rises from the dining room to the converted first floor level above. Here, Bedroom 1 occupies the entire upper floor, creating a generous and private retreat. The elevated position and dormer design provide excellent headroom and usable space, making it a comfortable principal bedroom with scope for additional storage or dressing areas.

To the outside there is a low maintenance rear garden with a tiered terrace area which is perfect for morning coffee or summer BBQ's.

Parking is available for residents only on the street.

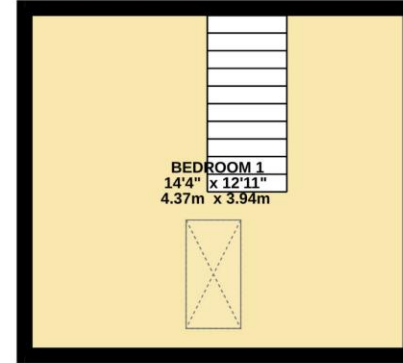
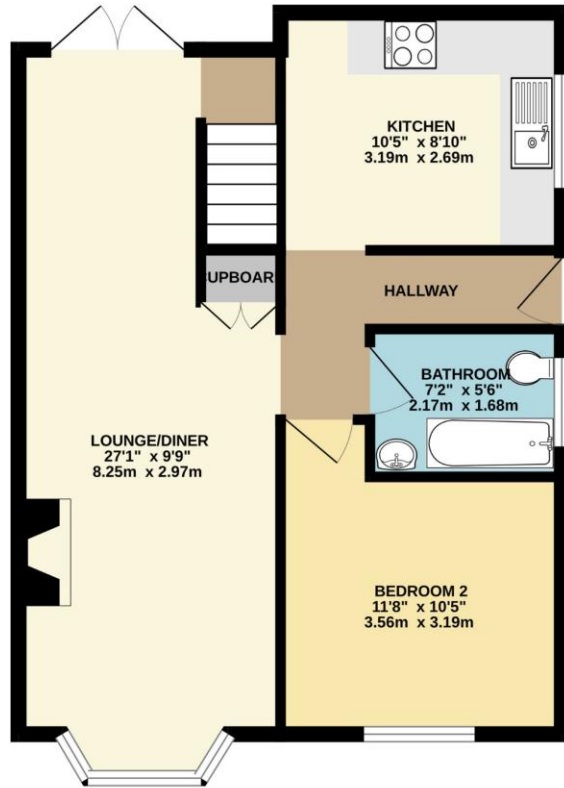
Overall, the property blends the convenience of a traditional bungalow with the added versatility of a first-floor conversion, offering flexible living across two floors—perfect for those seeking a home that adapts to both everyday life and future needs.

To view this property call Lang Town & Country Estate Agents on **01752 256000**.

[www.langtownandcountry.com](http://www.langtownandcountry.com)







TOTAL FLOOR AREA: 722 sq.ft. (67.1 sq.m.) approx.

Whilst every attempt has been made to ensure the accuracy of the floorplan contained here, measurements of doors, windows, rooms and any other items are approximate and no responsibility is taken for any error, omission or mis-statement. This plan is for illustrative purposes only and should be used as such by any prospective purchaser. The services, systems and appliances shown have not been tested and no guarantee as to their operability or efficiency can be given.  
 Made with Metroplan ©2026



Lang Town & Country  
 6 Mannamead road  
 Mannamead  
 Plymouth  
 PL4 7AA

Tel: 01752 256000

Email: [property@langtownandcountry.com](mailto:property@langtownandcountry.com)

[www.langtownandcountry.com](http://www.langtownandcountry.com)

Lang Town & Country endeavour to ensure the accuracy of property details produced and displayed, we have not tested any apparatus, equipment, fixtures, fittings or services and so cannot verify that they are connected, in working order or fit for purpose. A buyer must check the availability of any property and make an appointment to view before embarking on any journey to see a property.

