

## Wells Street, W1T

£750 Per week

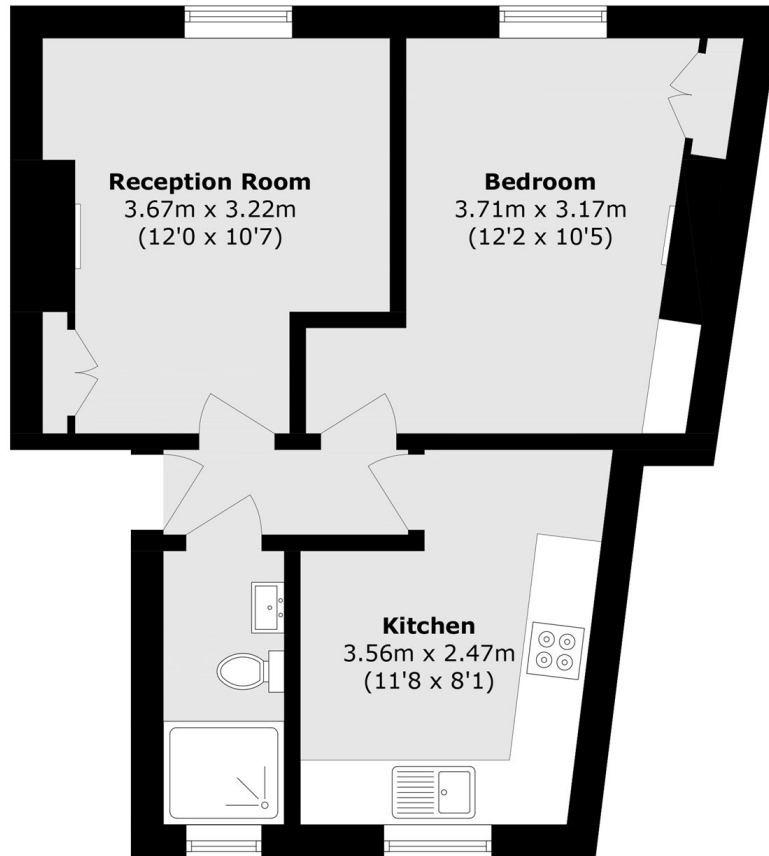
A beautifully presented two-bedroom property located on the third floor of a sought-after red-brick Victorian purpose-built block, perfectly positioned in the heart of Fitzrovia. The property has two double bedrooms, a separate eat-in kitchen and a modern bathroom.

Furnival Mansions is conveniently located just 0.3 miles from Oxford Circus station, 0.3 miles from Tottenham Court Road station and 0.4 miles from Gode Street station. The property further benefits from being within easy walking distance of the open green spaces of Regent's Park.

### Features

- Two Double bedrooms
- Modern Bathroom
- Wooden Floors
- Eat-In Kitchen
- Exceptionally Bright
- Third Floor Flat

# Wells Street, London, W1T



## Third Floor

Total area (approx.): 37.2 sq. m (400.4 sq. ft)