

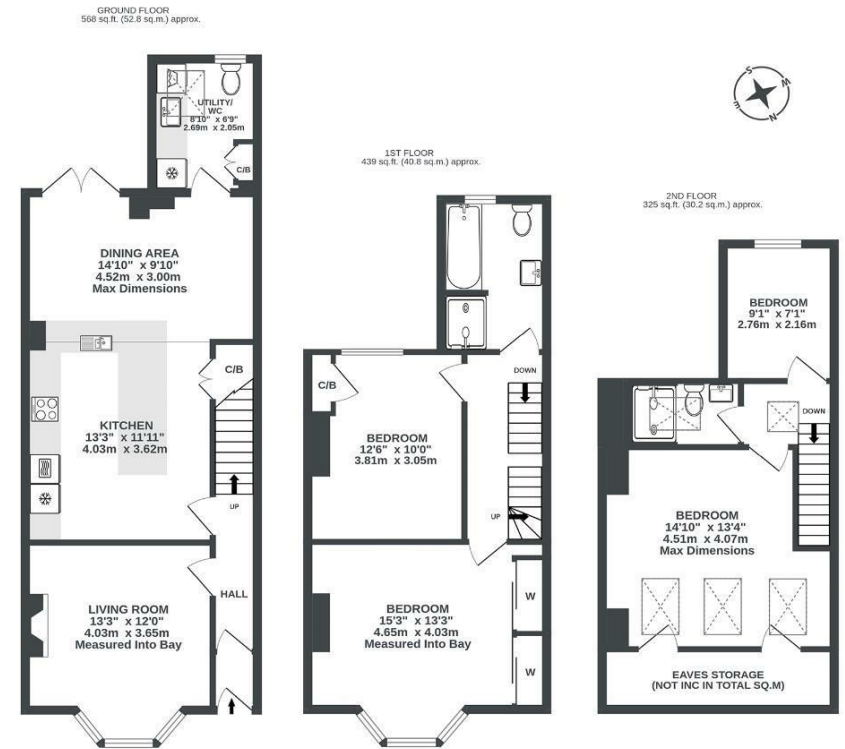
Boardwalk

Park Avenue

BEDMINSTER, BRISTOL

Park Avenue VICTORIA PARK

APPROXIMATE FLOOR AREA
123.8 SQM / 1333 SQFT



Illustrations are for reference purposes only, measurements are approximate, not to scale.

Boardwalk

Park Avenue

BEDMINSTER, BRISTOL

£

£675,000

zzz

4 Bedrooms



BS3 5AH



3 Bathrooms

“As a family we have loved living on Park Avenue. Spending evenings and weekends in the park or the pub with neighbours and friends, the community spirit here is what makes living on Park Avenue so special.”

