



West Hill, SW15

£440,000

This beautifully presented, spacious, split-level apartment is offered in turnkey condition. Set within an attractive, gated period mansion block, the property benefits from excellent security, superb transport links, and a private off-street parking space.

Thoughtfully and fully refurbished by the current owner, this home is ready to move into. Arranged over two floors, it provides a more house-like feel than a typical one-bedroom property. The ground floor features a bright, open-plan kitchen/reception room with modern integrated appliances, ideal for both relaxing and entertaining. Upstairs, a well-proportioned double bedroom is complemented by a new bathroom, creating a comfortable and private living space perfect for professionals or couples.

Further benefits from secure bike storage, a share of the freehold, and well-maintained communal gardens.

Mayfield Mansions is conveniently located with two gated access points via Upper Richmond Road and West Hill. It offers excellent transport links, being just a short walk from East Putney Underground station (District Line) and Putney mainline station, both providing swift connections into central London. The property also benefits from quick and convenient access to the A3. Mayfield Mansions is within easy reach of the River Thames, Wandsworth Park, and Richmond Park, as well as a wide range of cafés, gyms and shops.

Service Charge information:

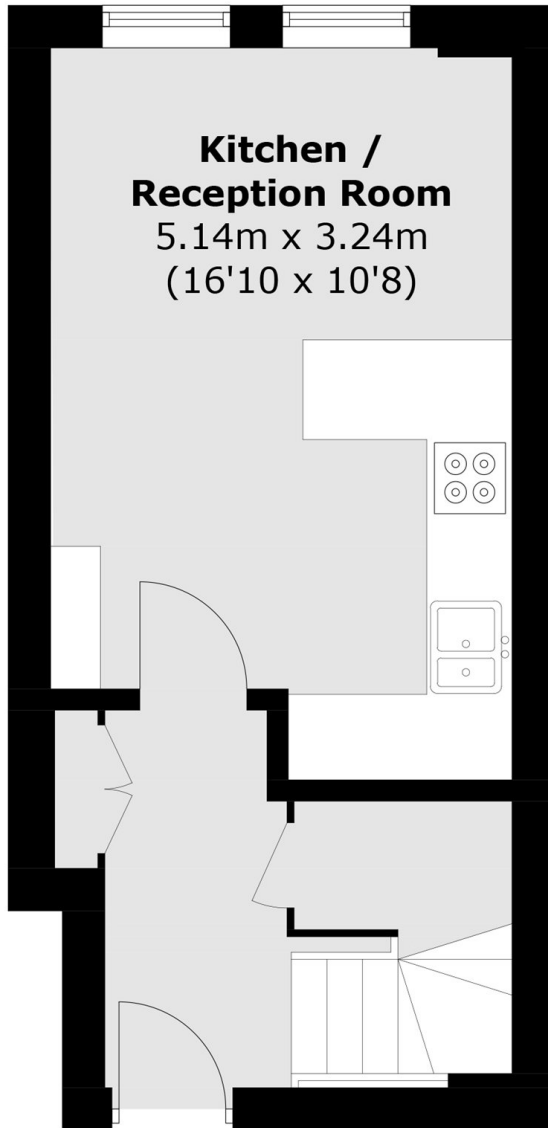
£3951 (including building insurance and contribution to a sinking fund)

Gas and water are also paid for communally and charged in addition to the standard service charge at £47.30 per month for Gas and £7.20 per month for water.

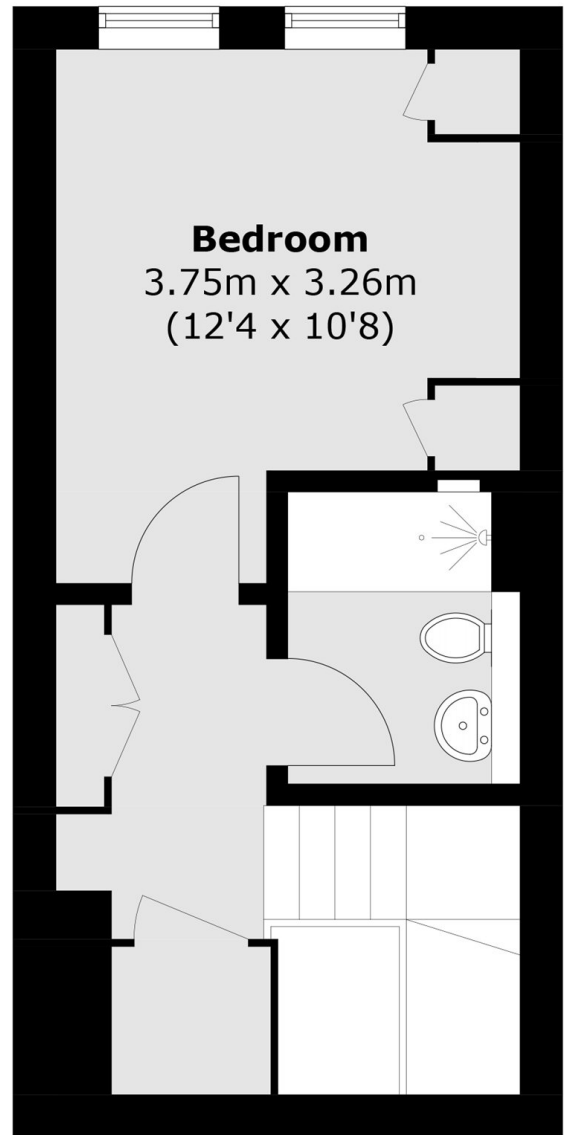
Features

- Share of Freehold
- Private Off Street Parking
- 505 Sq. ft
- One Bedroom
- Split Level
- Communal Gardens

West Hill, London, SW15



Ground Floor



First Floor

Total area (approx.): 47.0 sq. m (505.8 sq. ft)