

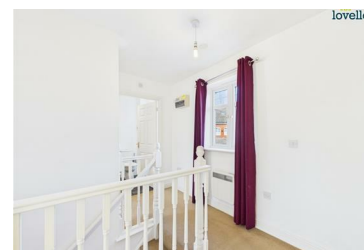
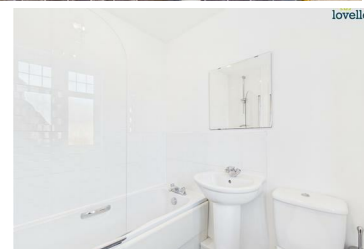


2 Flaxley Close, Lincoln, LN2 4GJ

£900 Per month



Situated in a popular residential area, this stylish apartment offers two double bedrooms, a bright open-plan kitchen and living space, and a sleek bathroom with a bathtub and overhead shower with private parking space and a garage. With plenty of natural light and a contemporary design, this is a fantastic opportunity for comfortable, modern living. Contact us today to arrange a viewing!



Deposit £1,038