



## Gloucester Terrace, W2

### £525,000

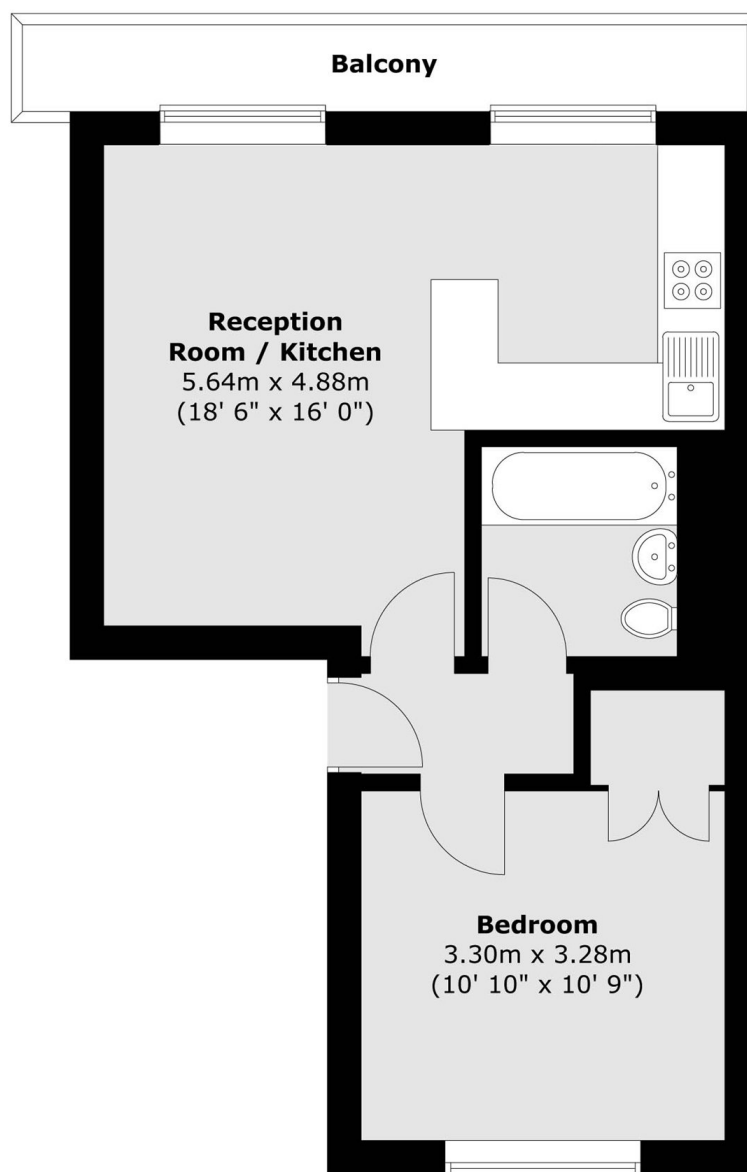
A one bedroom apartment with high ceilings, on the first floor of a white stucco fronted Victorian conversion with access to communal gardens. The property has an open plan reception with direct access to the private balcony and built-in wardrobes in the bedroom.

Gloucester Terrace is moments from Westbourne Grove, with plenty of local cafés, bars and restaurants. The green spaces of Hyde Park are a short walk away and Paddington Station is also close by giving easy access across and out of London.

### Features

- First Floor
- High Ceilings
- Private Balcony
- Communal Gardens
- Victorian Conversion
- Hyde Park

# Gloucester Terrace, London, W2



Total area (approx.) : 40.9 sq. m (440 sq. ft)  
Total balcony area (approx.) : 5.2 sq. m (56 sq. ft)