



Tiltman Place

London, N7

Asking Price £350,000

A bright and well-presented one bedroom apartment located on the first floor of this modern development on the site of the old Hornsey Baths.

The property features a spacious reception room with access to a private balcony, a separate kitchen/dining area with a second balcony, a generous double bedroom with built-in storage, and a modern bathroom.

CHESTERTONS



Tiltman Place

London, N7

- One Bedroom
- First Floor
- Excellent Location
- Two Balconies
- Concierge / Lift Access



Tiltman Place is quietly tucked away just off of Hornsey Road and is very well placed to benefit from the excellent local amenities of Finsbury Park and Holloway. Transport links are very good and the green open space of Finsbury Park is in close proximity.

Tenure: Leasehold (107 years remaining)

Service Charge: £3338 p.a

Ground Rent: £125 p.a

Local Authority: Islington

Council Tax Band: D

Score	Energy rating	Current	Potential
92+	A		
81-91	B		
69-80	C	78 C	83 B
55-68	D		
39-54	E		
21-38	F		
1-20	G		

Chestertons Camden & Kentish Town Sales

99-101 Parkway

Camden

London

NW1 7PP

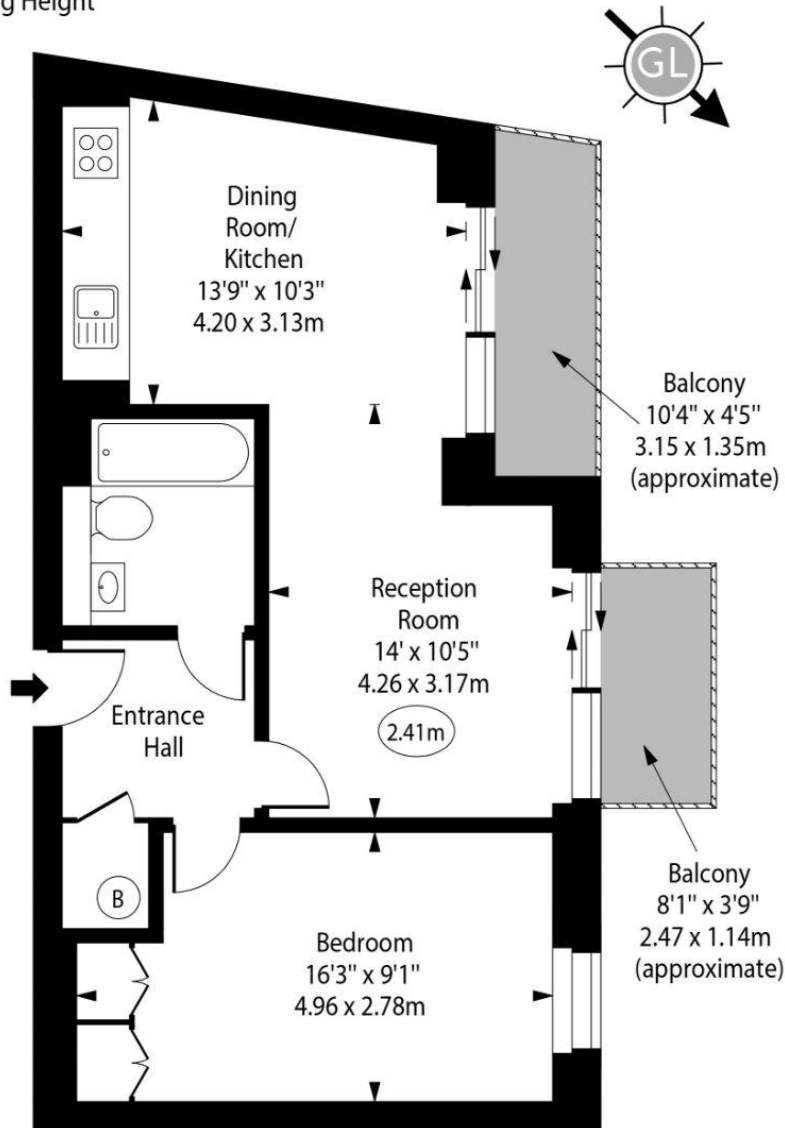
camden@chestertons.co.uk

020 7267 2053

chestertons.co.uk

Tiltman Place

○ - Ceiling Height



First Floor

Gross Internal Area - 520 Sq Ft - 48.31 Sq M

Approx Gross Internal Area

520 Sq Ft - 48.31 Sq M

Every attempt has been made to ensure the accuracy of the floor plan shown. However, all measurements, fixtures, fittings, and data shown are approximate interpretations and for illustrative purposes only. Measured according to the RICS. Not To Scale.

www.goldlens.co.uk

Ref. No. 032009D

