



## Flat D

Helix Gardens | | Brixton | SW2 2JJ

**£1,795 Per Month**



**MovingInn**  
sales, lettings and management



**MovingInn**  
sales, lettings & management

# Flat D

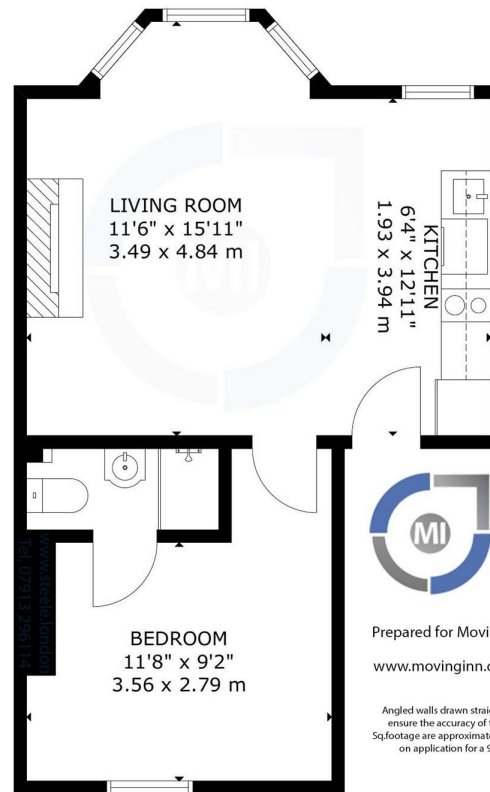
Helix Gardens |  
Brixton | SW2 2JJ  
£1,795 Per Month

Welcome to this charming flat located in the vibrant area of Helix Gardens, Brixton, SW2 2JJ. This brand new property offers a delightful living experience with its open plan kitchen and lounge, creating a bright and airy atmosphere that is perfect for modern living.

Spanning an impressive 405 square feet, this flat features one well-proportioned bedroom, providing a comfortable retreat for relaxation. The bathroom is thoughtfully designed, ensuring convenience and style. The laminate flooring throughout adds a contemporary touch, making maintenance a breeze.

The kitchen is equipped with brand new appliances, allowing you to prepare meals with ease and enjoy the culinary delights of your new home. The excellent location of this property means you will have access to a variety of local amenities, including shops, restaurants, and transport links, making it an ideal choice for those seeking both comfort and convenience.

- Brand new flat in Brixton
- Bright and airy interiors
- Laminate flooring throughout
- Available immediately
- Close to local amenities
- Open plan kitchen and lounge
- Water Rates and Gas/Central Heating are Included in the Rent
- Brand new kitchen appliances
- Excellent location in SW2
- Viewing recommended



Helix Gardens SW2  
Gross Internal Area:  
38 Sq.meters  
405 Sq. feet

First Floor



Prepared for Moving Inn Estate Agents

[www.movinginn.co.uk](http://www.movinginn.co.uk)

Angled walls drawn straight for easy representation. Whilst every attempt has been made to ensure the accuracy of this Lettings floor plan measurements of doors, windows, rooms & Sq.footage are approximate. For Identification Purposes only. The actual property will vary. Price on application for a 90 day Licence to use this lettings plan ©27/04/2026. Not to scale.

Energy Efficiency Rating		Current	Potential
<i>Very energy efficient - lower running costs</i>			
(92 plus)	A		
(81-91)	B		
(69-80)	C		
(55-68)	D	70	75
(39-54)	E		
(21-38)	F		
(1-20)	G		
<i>Not energy efficient - higher running costs</i>			
<b>England &amp; Wales</b>		EU Directive 2002/91/EC	

Council Tax Band A  
EPC Rating C

467 Norwood Road  
West Norwood  
London  
SE27 9DJ  
02087610830  
[dean@movinginn.co.uk](mailto:dean@movinginn.co.uk)  
[www.movinginn.co.uk](http://www.movinginn.co.uk)