



0 Bed Apartment
located in

JR
JOSHUA REED
Estate Agents

Pilgrim House Evron
Place
Hertford
SG14 1PF



0



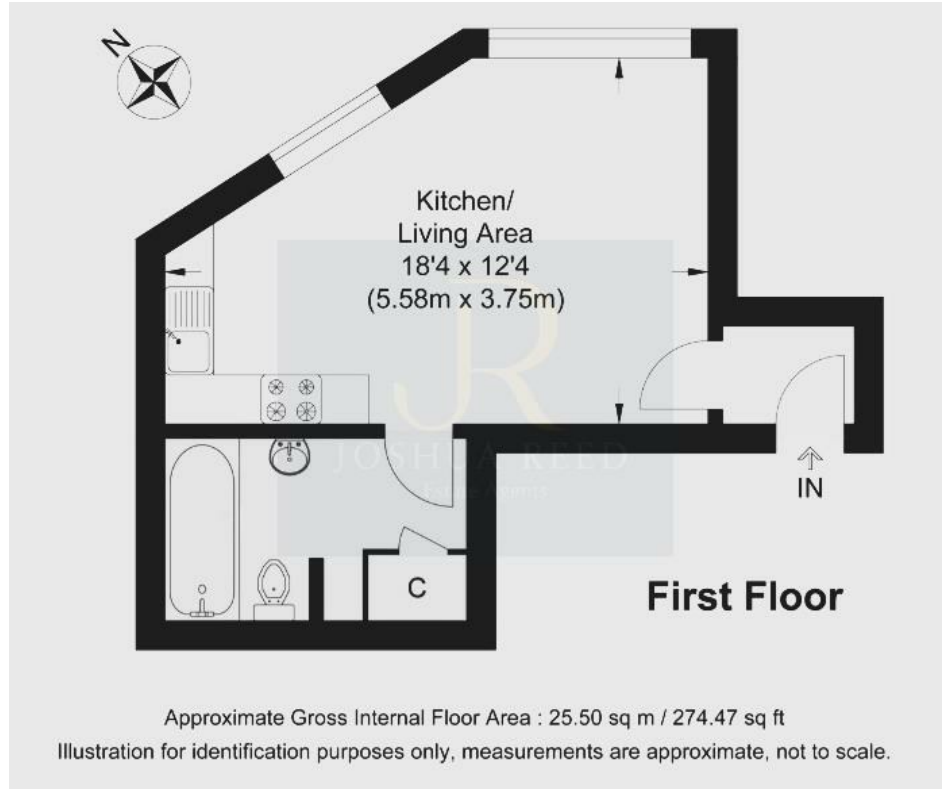
1



1



C



£155,000

CONTACT

23-27 Maidenhead Street
Hertford
Hertfordshire
SG14 1DW

EMAIL

josh@joshua-reed.co.uk

TELEPHONE

01992 917388

www.joshua-reed.co.uk

SUMMARY

A stylish and bright studio apartment situated in the heart of Hertford Town Centre, prime location for an abundance of shops, pubs, restaurants and just a short walk to both Hertford East and Hertford North Train Station. This property is ideal for first time buyers looking to get onto the property ladder or for investors looking for an attractive and reliable yield.

The main studio room features large windows letting in plenty of light which is open plan to the re-fitted white gloss kitchen with integrated appliances. Modern bathroom, useful storage space and secure entry phone system.

This is a rare opportunity for a convenient and low maintenance town centre studio apartment in a vibrant location.

Contact Joshua Reed Estate Agents to arrange a viewing.

DIRECTIONS

Energy Efficiency Rating		Current	Potential
Very energy efficient - lower running costs			
(92 plus) A			
(81-91) B			
(69-80) C		73	
(55-68) D			
(39-54) E			
(21-38) F			
(1-20) G			
Not energy efficient - higher running costs			
England & Wales		EU Directive 2002/91/EC	