



Elphinstone Road, Hastings

£800 PCM

## Key Features

- ◆ One bedroom, hall-floor flat
- ◆ Large Bay Windows
- ◆ Brand New Kitchen
- ◆ High Ceilings
- ◆ Close to local shops and amenities
- ◆ EPC rating E

1  1  1 

  
Local knowledge, national reach



Northwood are delighted to welcome to market this lovely, hall-floor, one-bedroom flat near Alexandra Park in Hastings.

Accommodation comprises: open-plan living room/kitchen, large double bedroom and bathroom with electric shower over bath.

Further benefits include: high ceilings, electric heaters, large bay windows and door entry phone.

Free on street parking is available in the surrounding area.

Located near Alexandra Park, close to Morrisons, local shops and amenities and equidistant from both Hastings and Ore mainline train stations, this lovely flat in a period building is perfectly situated for those who live and work in this up-and-coming seaside town.





Please view our immersive virtual tour to fully appreciate this fantastic property:

<https://tour.giraffe360.com/fd40d32413554aa1a6923a755fcec319/>

Total household income must exceed £24,000.00 to be considered for this property.

Council Tax Band A: £1785

Holding Deposit: £184.61 (one week's rent)

Full Deposit: £923.07 (Holding Deposit + extra 4 weeks' rent to make a 5 week deposit)

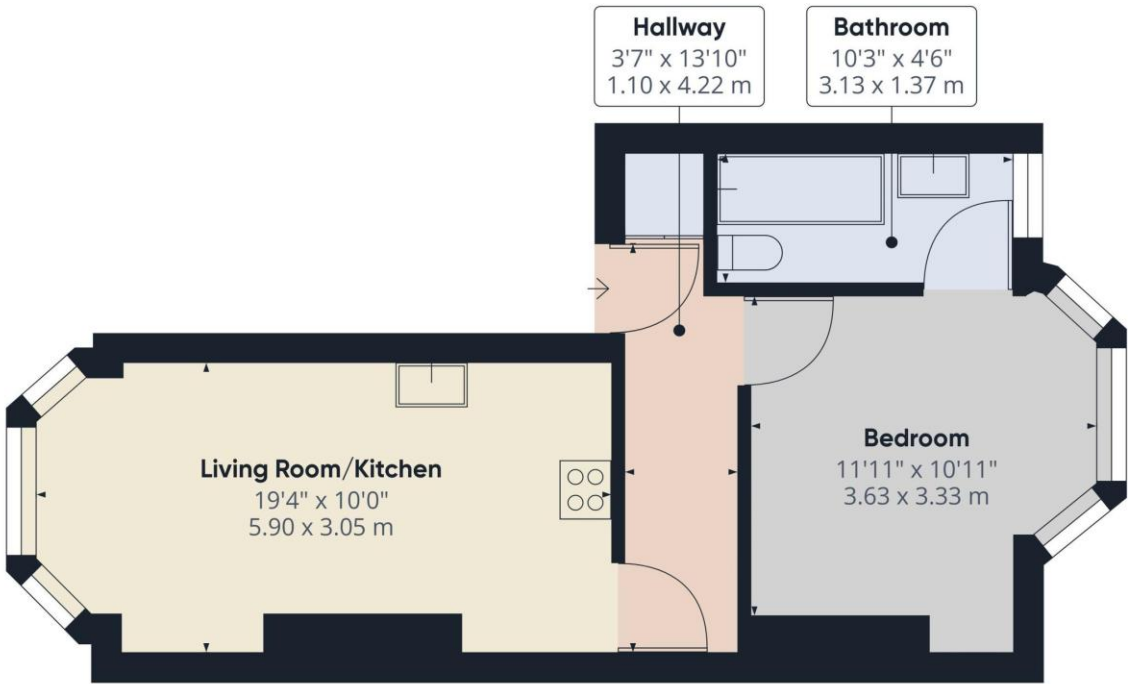
1st month's rent + Full Deposit: £1723.07

Mobile Phone Coverage and Broadband speeds can be checked on the Ofcom website:

<https://checker.ofcom.org.uk/>

This property is managed by Northwood, should a maintenance issue arise, it can be reported 24 hours a day via our website.





Approximate total area<sup>(1)</sup>  
415 ft<sup>2</sup>  
38.56 m<sup>2</sup>

(1) Excluding balconies and terraces

While every attempt has been made to ensure accuracy, all measurements are approximate, not to scale. This floor plan is for illustrative purposes only.

GIRAFFE360



SEE MORE ONLINE

**Northwood**  
81-83 South Street  
Eastbourne  
BN21 4LR  
01323 744544  
eastbourne@northwooduk.com