



Crondall Street, Shoreditch N1
London



Cron dall Street, Shoreditch N1

Well-proportioned three bedroom maisonette set within a purpose-built development, situated in popular north Shoreditch close to Hoxton Square and Hoxton overground station.

- Three Double Bedrooms
- Maisonette Arranged over Two Floors
- South-Facing Rear Garden
- Spacious Open-Plan Kitchen/Living Space
- Popular North Shoreditch Location
- Close to Hoxton Overground Station
- Furnished
- Available from 22nd August 2026



Well-proportioned three bedroom maisonette set within a purpose-built development, situated in popular north Shoreditch close to Hoxton Square and Hoxton overground station.

Arranged over two floors and featuring a generous open-plan kitchen / living space which opens out onto a south-facing rear garden, the property further comprises of three true double bedrooms, a main bathroom and an additional downstairs WC.

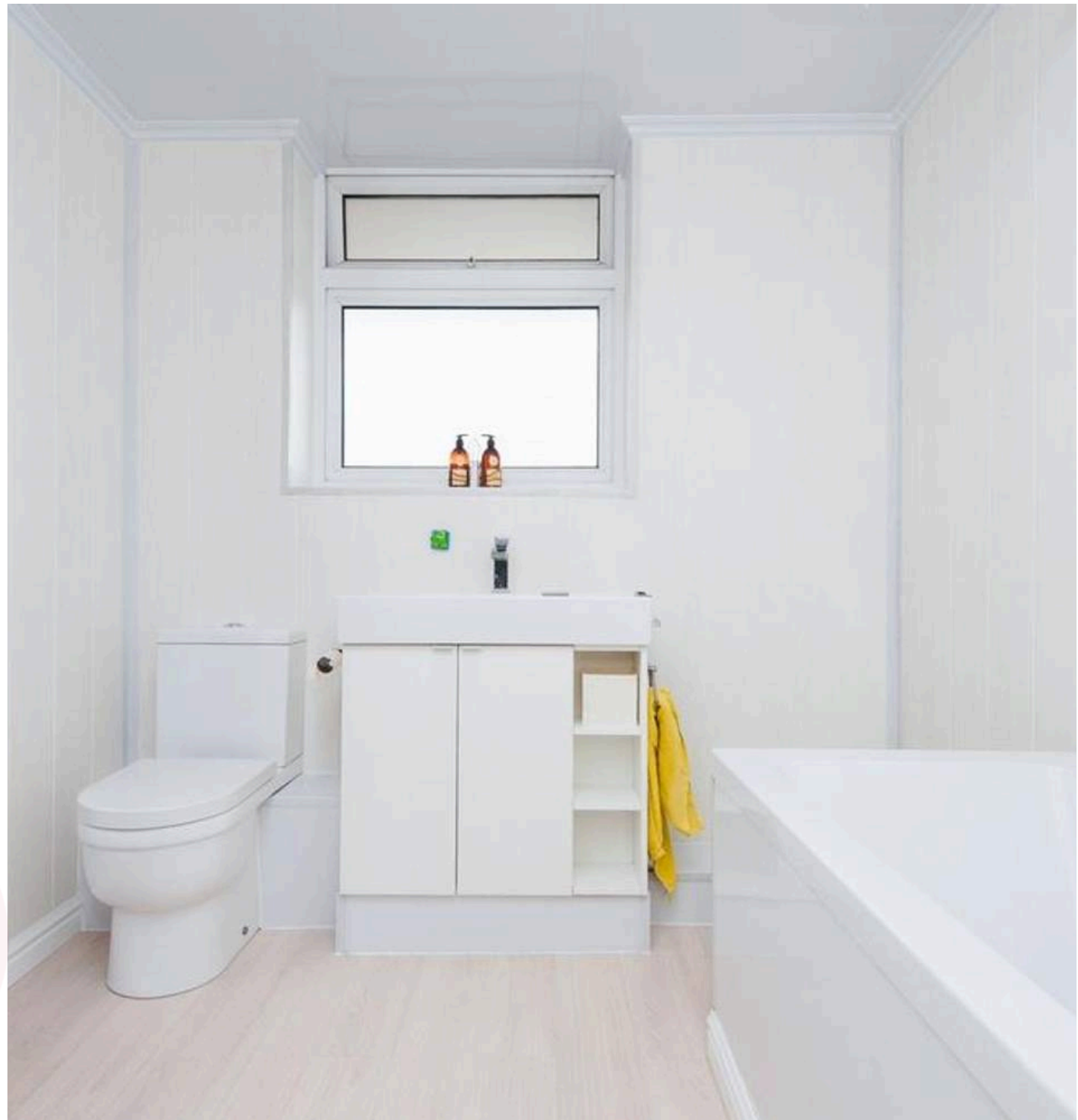
The location covers all bases, with convenient transports links and green spaces, such as Shoreditch Park, nearby. Social and cultural attractions, including Columbia Road, an array of authentic Vietnamese restaurants on Kingsland Road and endless options of bars and independent cafes to name a few, are also on your doorstep.

This furnished property perfectly suits three sharing professionals and is available from 22nd August 2026.

Council Tax band: C

EPC Energy Efficiency Rating: C

EPC Environmental Impact Rating: C





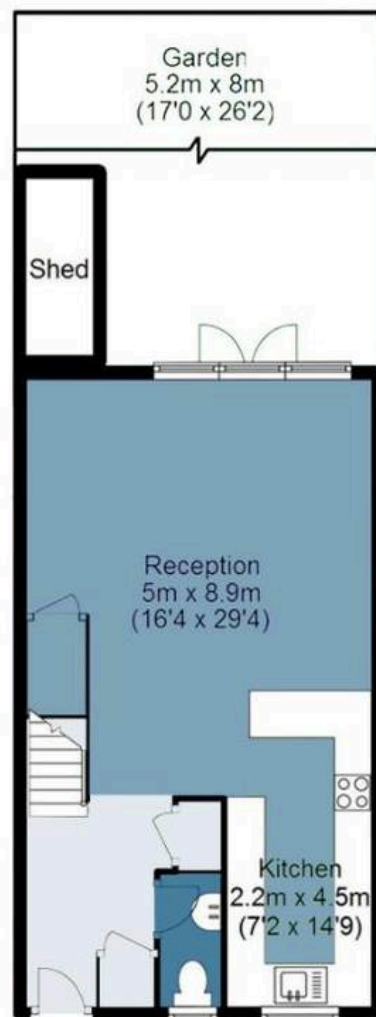


Crondall Street

Approx. Gross Internal Area 96 Sq M (1026 Sq Ft)

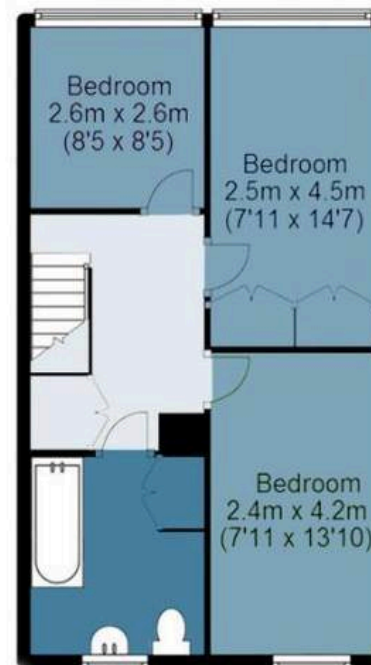
Ground Floor

Approx. 48 sq. meters (513 sq. feet)



First Floor

Approx. 48 sq. meters (513 sq. feet)



Measurements are approximate and for illustration purposes only. While we do not doubt the accuracy and completeness, we advise you conduct a careful independent assessment of the property to determine monetary value.

FROM EAST LONDON ENERGY TO WEST ESSEX EASE

We Make Moving Home Easy.

At Butler and Stag, we do more than just connect London to West Essex – we make the move seamless. With offices spanning from vibrant East London to the tranquillity of West Essex, we understand the nuances of each area and the journey people take between them. Our marketing goes beyond standard listings, showcasing every property with precision, creativity, and reach that others simply can't match. Coupled with an unparalleled attention to detail, from first enquiry to final move-in, we ensure every client and customer feels informed, supported, and confident. Simply put, we do the little things that make a big difference, setting us apart in every step of the property experience.



LONDON STRATFORD SOUTH WOODFORD BUCKHURST HILL LOUGHTON EPPING BEYOND

Like what you see? Let's talk

Book your **FREE** valuation now



020 8102 1236

london@butlerandstag.com

508 Roman Road, Bow, London, E3 5LU

butlerandstag.uk

IMPORTANT NOTICE - These particulars have been prepared in good faith and they are not intended to constitute part of an offer or contract. We have not performed a structural survey on this property and the services, appliances and specific fittings have not been tested. All photographs, measurements, floor plans and distances referred to are given as a guide and should not be relied upon.

BUTLER & STAG

