



jordanfishwick

Apt 96 Spectrum Block 3, Blackfriars Road,
£1,150 Per Calendar Month



The Property

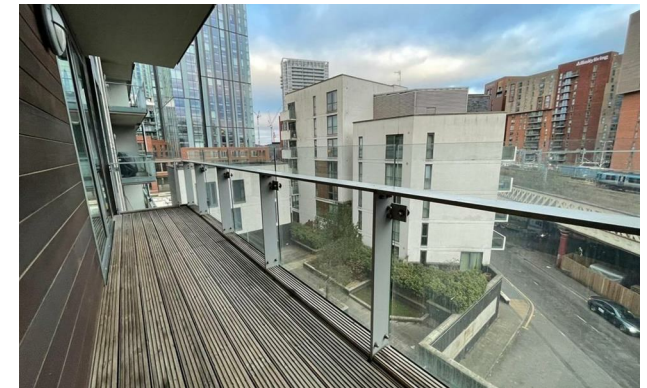
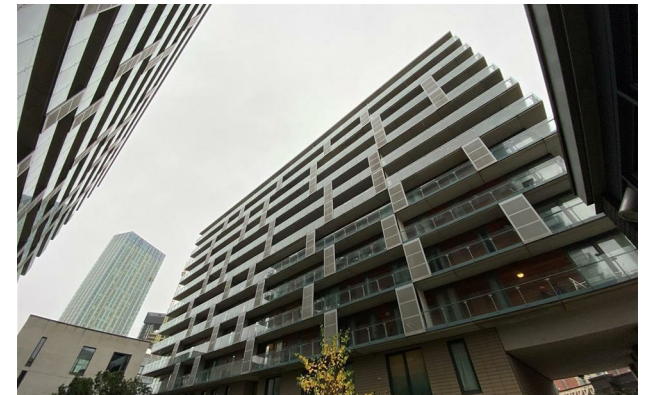
PLEASE NOTE - BUILDING WORKS ARE DUE TO COMMENCE IN 2026. MORE UPDATES TO COME

Available Early February. This fourth floor apartment in the highly popular Spectrum development, offers high specification living with a location to match. This one bedroom apartment is well suited to professionals alike. The apartment comprises of an open plan living/kitchen area, double bedroom with integrated wardrobes and a stylish three piece bathroom suite. There is a full length balcony which can be accessed from both the living area and bedroom. Secure allocated parking space. The development has a 24 hour concierge and landscaped communal gardens. Furnished. No pets. £35pcm water consumption charge. Tax Band B. EPC Rating B. REPOSIT - Nil Deposit Option Available.

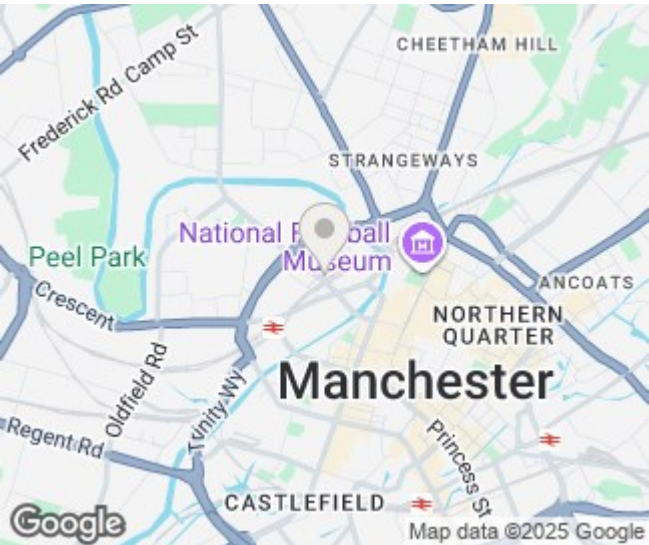
VIDEO/ PHOTO OFFERS NOT ACCEPTED - PLEASE CALL TO BOOK A VIEWING


Spectrum Block 3 Salford M3 7BP

£1,150 Per Calendar Month



- Available Early February
- Fourth Floor Apartment
- One bedroom
- Secure Parking included
- On Site Concierge
- Tax Band B
- EPC Rating B
- £35 pcm on Water Charge
- Close to City Centre



Energy Efficiency Rating		
	Current	Potential
Very energy efficient - lower running costs		
(92 plus) A		
(81-91) B	84	87
(69-80) C		
(55-68) D		
(39-54) E		
(21-38) F		
(1-20) G		
Not energy efficient - higher running costs		
England & Wales	EU Directive 2002/91/EC 	





These particulars are believed to be accurate but they are not guaranteed and do not form a contract. Neither Jordan Fishwick nor the vendor or lessor accept any responsibility in respect of these particulars, which are not intended to be statements or representations of fact and any intending purchaser or lessee must satisfy himself by inspection or otherwise as to the correctness of each of the statements contained in these particulars. Any floorplans on this brochure are for illustrative purposes only and are not necessarily to scale.

Offices at: Offices at Chorlton, Didsbury, Disley, Hale, Glossop, Macclesfield, Manchester Deansgate, Manchester Whitworth Street, New Mills, Sale, Wilmslow and Withington