



**Ashley Rise, Ashley Tiverton EX16 5PW**



**welcome to**

## **Ashley Rise, Ashley Tiverton**

An exceptional detached bungalow with views over Tiverton and beyond. Landscaped Gardens & Garage/ Workshop. In brief there are three bedrooms, lounge with bay window with views. A modern kitchen/diner with doors to the garden. Ensuite shower room and family bathroom.

### **Description**

Located in the sought after Ashley Rise area of Tiverton, this beautifully maintained three bedroom detached bungalow enjoys an elevated position that captures far reaching views across over Tiverton and the countryside beyond.

A welcoming entrance hall leads through to the front facing lounge with a bay window. To the rear is a modern kitchen/dining room, with French doors that open directly onto the landscaped rear garden. There are three well-proportioned bedrooms, bedroom one with an en-suite shower room. A modern family bathroom completes the accommodation.

Below the main living space, the property further benefits from a larger-than-average garage with an electric door, additional side access, and ample room for a workshop or utility area. This space flows into an expansive storeroom, ideal for hobbies, a home gym, or a dedicated playroom.

### **Entrance Hall**

Honeywell Home central heating. Radiator.

### **Lounge**

Double glazed bay window to front. TV Point. Fireplace with electric stove. (Open fire behind)

### **Kitchen/Diner**

Double glazed window to the rear. Fitted Kitchen with a range of wall base units, sink and drainer, with splashback. Integrated fridge freezer, built in Cooker with extractor fan over. Built in microwave. Space for wash/dryer, Space D/W. Electric induction, spotlights, patio doors.

### **Hallway**

Cloak cupboard, Boiler in cupboard, Loft access,

### **Bedroom One**

Double glazed to the rear, built in wardrobes, radiator. Fan light. Door to ensuite.

### **En Suite**

Double glazed window to rear, radiator. Shower cubical with shower, wash hand basin, WC.

### **Bedroom Two**

Double glazed window to the front, views, radiator. Built in wardrobes. Wall lights.

### **Bedroom Three**

Double glazed window to the front, radiator, currently used as a study.





### **Bathroom**

Main family bathroom, with WC, Bath with shower attachment. Radiator, Double glazed window to rear, Sink with vanity unit, Shaver point.

### **Gardens**

This property enjoys front and rear gardens. , To the rear is an entertaining space with patio area. Access to both sides and to the garden. Outdoor power and tap.  
Garden shed.

### **Parking**

Driveway providing off road parking and an EV Charger.

### **Outbuildings**

Garage, electric door - water + storeroom. with electric.



***view this property online*** [fox-and-sons.co.uk/Property/TVT105991](https://fox-and-sons.co.uk/Property/TVT105991)



welcome to

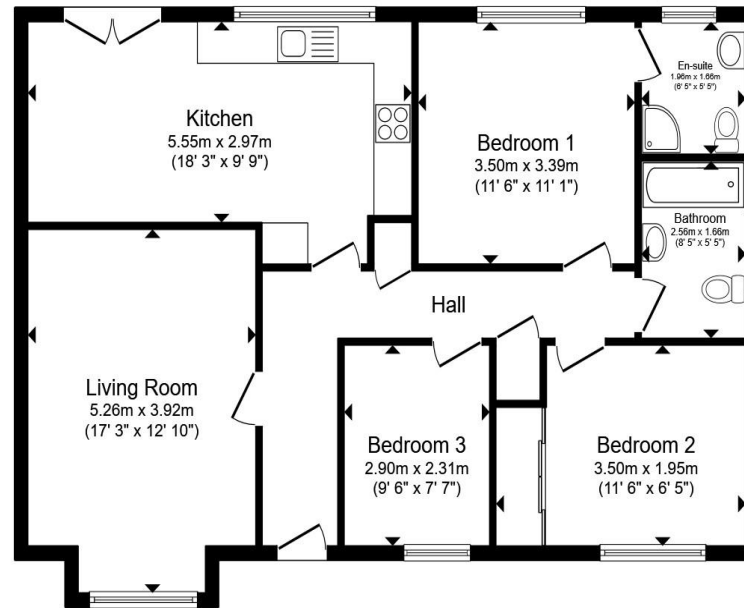
## Ashley Rise, Ashley Tiverton

- Detached Three Bedroom Bungalow
- Modern Kitchen/Diner
- Lounge with Bay Window
- Shower Room & Bathroom
- Garage, Storeroom & driveway

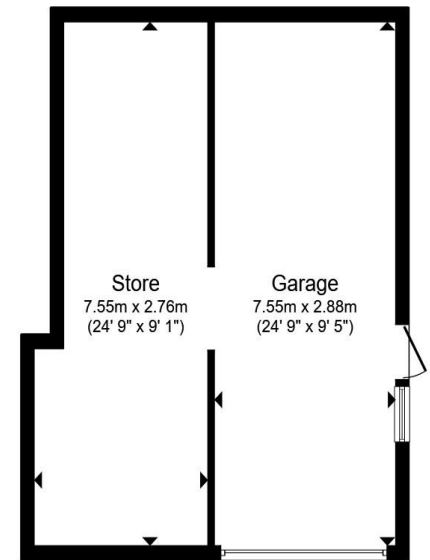
Tenure: Freehold EPC Rating: D  
Council Tax Band: D

guide price

**£385,000**



Floor Plan



Garage

Total floor area 128.9 m<sup>2</sup> (1,388 sq.ft.) approx

This floor plan is for illustrative purposes only. It is not drawn to scale. Any measurements, floor areas (including any total floor area), openings and orientation are approximate. No details are guaranteed, they cannot be relied upon for any purpose and they do not form part of any agreement. No liability is taken for any error, omission or misstatement. A party must rely upon its own inspection(s). Powered by [www.propertybox.io](http://www.propertybox.io)

 fox & sons

view this property online [fox-and-sons.co.uk/Property/TVT105991](http://fox-and-sons.co.uk/Property/TVT105991)



Property Ref:  
TVT105991 - 0003

1. MONEY LAUNDERING REGULATIONS Intending purchasers will be asked to produce identification documentation at a later stage and we would ask for your co-operation in order that there is no delay in agreeing the sale. 2. These particulars do not constitute part or all of an offer or contract. 3. The measurements indicated are supplied for guidance only and as such must be considered incorrect. Potential buyers are advised to recheck measurements before committing to any expense. 4. We have not tested any apparatus, equipment, fixtures or services and it is in the buyers interest to check the working condition of any appliances. 5. Where an EPC, or a Home Report (Scotland only) is held for this property, it is available for inspection at the branch by appointment. If you require a printed version of a Home Report, you will need to pay a reasonable production charge reflecting printing and other costs. 6. We are not able to offer an opinion either written or verbal on the content of these reports and this must be obtained from your legal representative. 7. Whilst we take care in preparing these reports, a buyer should ensure that his/her legal representative confirms as soon as possible all matters relating to title including the extent and boundaries of the property and other important matters before exchange of contracts.

Fox & Sons is a trading name of Sequence (UK) Limited which is registered in England and Wales under company number 4268443, Registered Office is Cumbria House, 16-20 Hockliffe Street, Leighton Buzzard, Bedfordshire, LU7 1GN. VAT Registration Number is 500 2481 05.

 fox & sons



**01884 256041**



[tiverton@fox-and-sons.co.uk](mailto:tiverton@fox-and-sons.co.uk)



36 Bampton Street, TIVERTON, Devon, EX16 6AH



[fox-and-sons.co.uk](http://fox-and-sons.co.uk)