



To Let

Tadcaster Road, York

YO24 1HE

£7,000

Per Calendar Month

 4  6

 4  B

- Deposit options available*
- Council Tax - H
- Parking

**HUNTERS
EXCLUSIVE**

* Terms and conditions apply - Hunters York Lettings. There is further information that may be material to your decision whether to view this property please ask a member of the team for further details.

Tadcaster Road, York

YO24 1HE

Description

Hunters are delighted to present this rare opportunity to rent a distinctive, high-specification home in a prime York location.

Ideally suited to those seeking space, privacy, and luxury living within easy reach of the city centre, the property also benefits from a glass garden room and separate WC—perfect for summer entertaining.

- Impressive detached home in a private gated setting
- Excellent location close to York Knavesmire, ring roads and railway station
- Luxury principle suite with dressing room
- Five additional double bedrooms
- Underfloor heating & smart home features
- Contemporary glass garden room with fitted bar and wc
- Double garage & ample parking
- Landscaped walled low maintenance gardens & terraces
- Over 5,000 sq.ft. of space to enjoy
- EPC B, council tax band H



Tadcaster Road, York

YO24 1HE

Description

Hunters are delighted to exclusively present this outstanding gated detached residence, offering six-bedroom accommodation arranged over three floors and set within beautifully landscaped private grounds directly opposite York Racecourse.

The property enjoys a highly desirable position just off Tadcaster Road, one of York's most prestigious residential approaches, known for its tree-lined avenues, excellent schools, thriving local amenities and fast access to both the city centre and the A64.

This prime location places York railway station, the Knavesmire, independent cafés, supermarkets and scenic walking routes all within easy reach, making it one of the most convenient and sought-after areas in the city for executive living and commuting to London King's Cross, Leeds and Manchester.

Designed in an elegant neo-classical style and finished to an exceptional standard throughout, this impressive home combines modern efficiency, generous proportions, and luxury specification rarely found in contemporary rental properties.

A striking central reception hall sets the tone for the generous accommodation. The property offers three substantial reception rooms, including an elegant drawing room with limestone fireplace and bi-fold doors opening onto a paved terrace.

The superb open-plan kitchen family room features a bespoke hand-painted Stephen Neall kitchen, Silestone worktops, premium appliances and further bi-fold doors to the rear garden.

A formal dining room is accessed via double doors, complemented by a versatile sitting room/playroom, utility room, and ground floor WC.

The upper floors provide excellent bedroom accommodation, including a luxurious principal suite with dressing room and en suite bathroom.

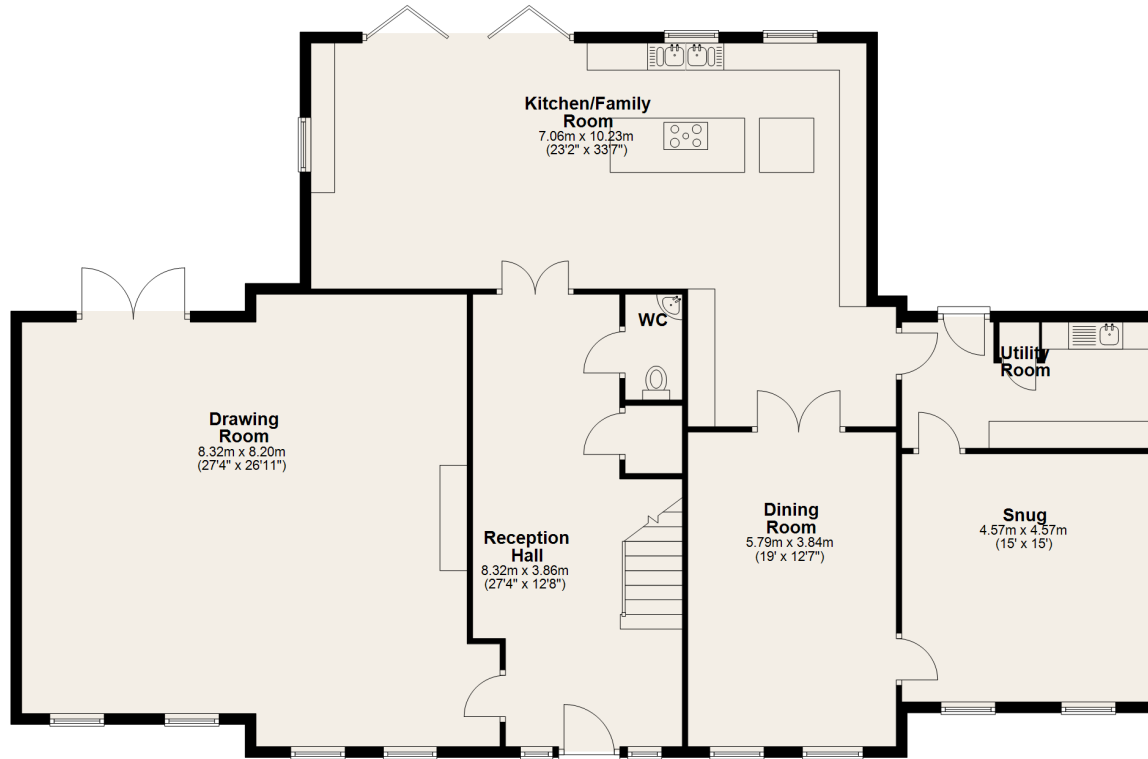
There are four further double bedrooms, two with en suite facilities, an additional shower room, and a study or optional sixth bedroom, offering flexibility for home working or guest use. The property benefits from fitted wardrobes in the bedrooms and also benefits from underfloor heating throughout.

The property is approached via a private driveway with secure electric gates, ensuring a high degree of privacy and security. The grounds include ample parking, a detached double garage, and beautifully landscaped gardens with walled boundaries and stone terraces ideal for outdoor entertaining.

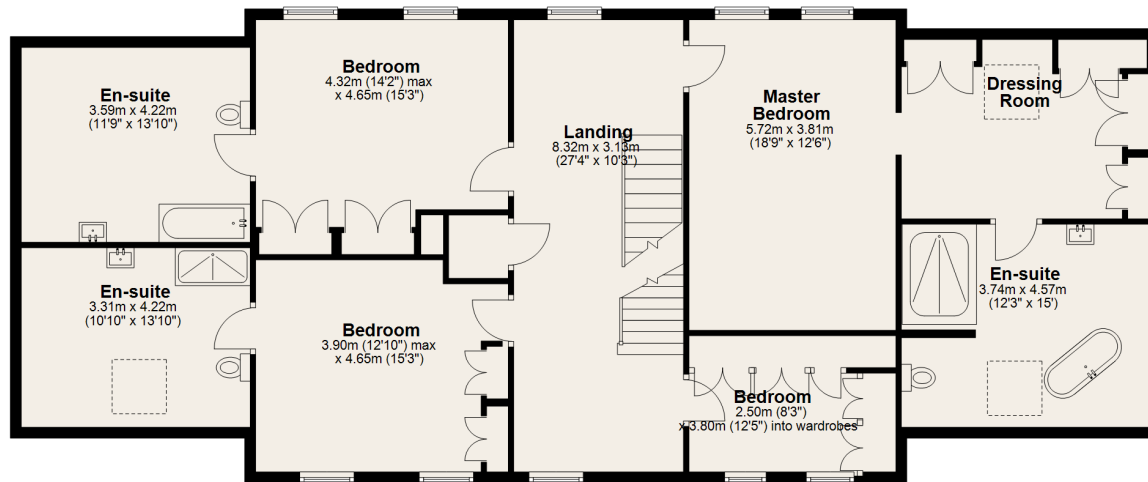
A standout feature is the external glass garden room, complete with integrated bar area and WC, perfect for entertaining, relaxation or use as a gym.



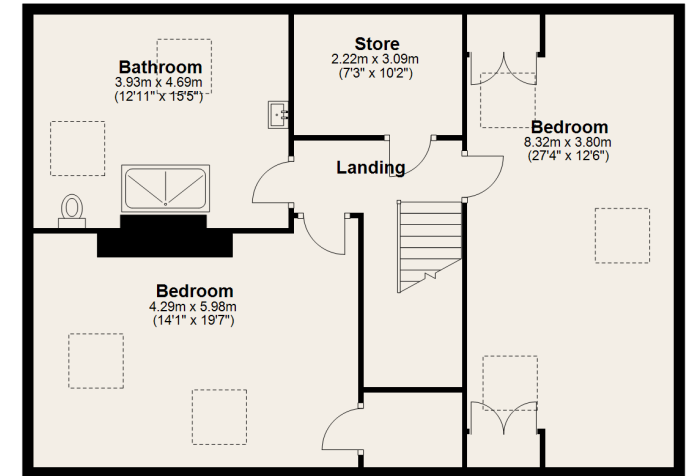
Ground Floor
Approx. 209.1 sq. metres (2250.6 sq. feet)



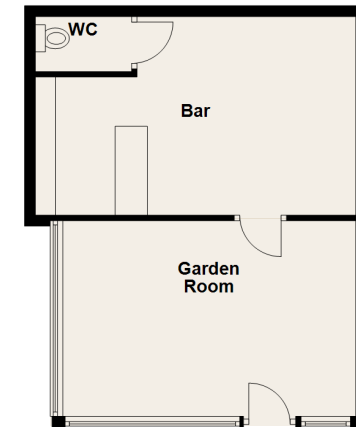
First Floor
Approx. 161.6 sq. metres (1739.6 sq. feet)



Second Floor
Approx. 98.1 sq. metres (1056.2 sq. feet)



Garden Buildings
Approx. 0.0 sq. metres (0.0 sq. feet)
(excluding Garden Room, Bar, WC)

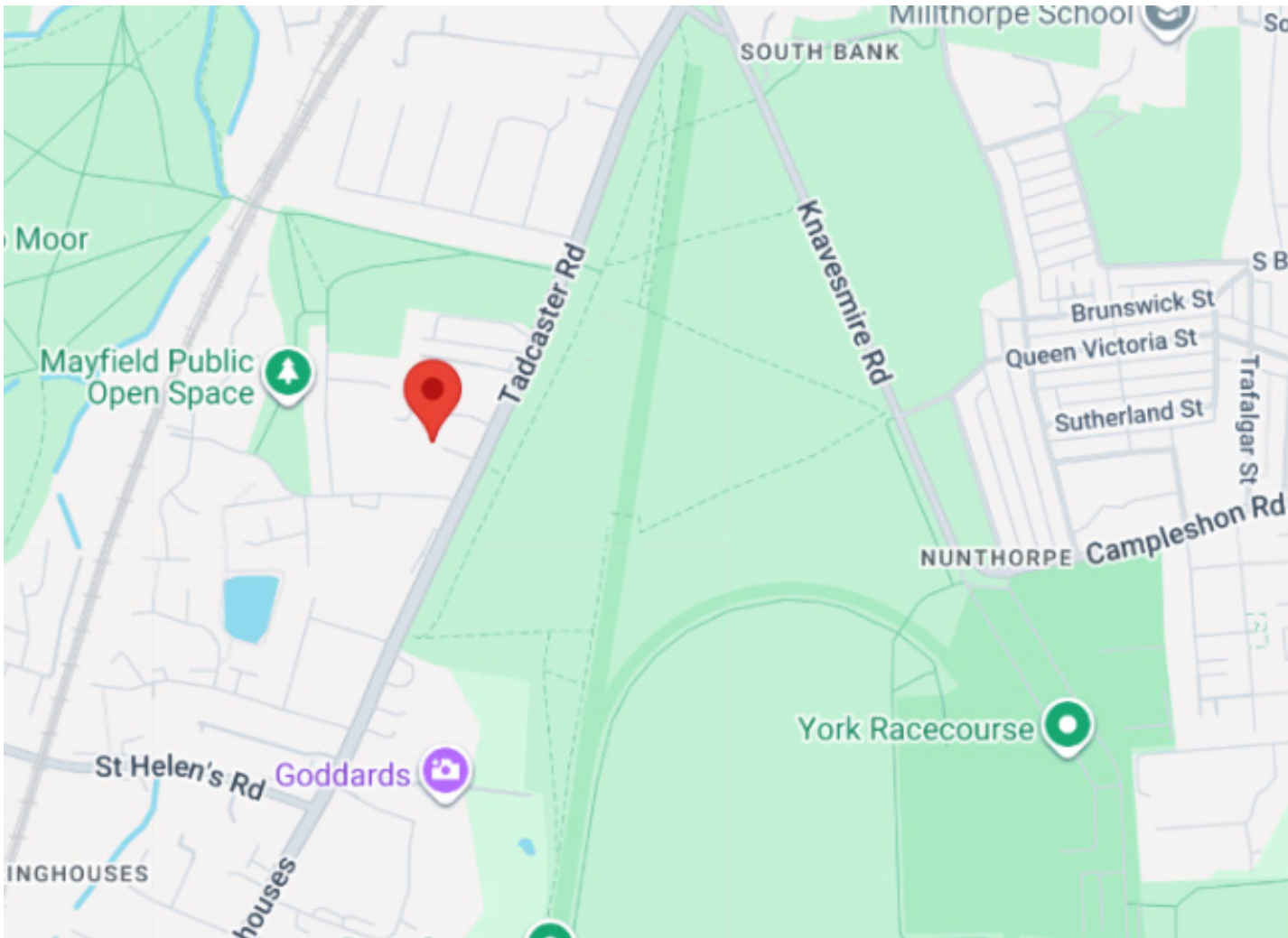


Total area: approx. 468.8 sq. metres (5046.4 sq. feet)

Not to scale-for illustrative purposes only. All measurements and fixtures including doors and windows are approximate and should be independently verified.
Prepared by Andrew N Wilson Photography

Plan produced using PlanUp.





Energy Performance Certificate

Score	Energy rating	Current	Potential
92+	A		
81-91	B	86 B	89 B
69-80	C		
55-68	D		
39-54	E		
21-38	F		
1-20	G		



These particulars are intended to give a fair and reliable description of the property but no responsibility for any inaccuracy or error can be accepted and do not constitute an offer or contract. We have not tested any services or appliances (including central heating if fitted) referred to in these particulars and the purchasers are advised to satisfy themselves as to the working order and condition. If a property is unoccupied at any time there may be reconnection charges for any switched off/disconnected or drained services or appliances - All measurements are approximate.

Thinking of selling or letting?

If you are thinking of selling your home or just curious to discover the value of your property, Hunters would be pleased to provide free, no obligation sales and marketing advice. Even if your home is outside the area covered by our local offices we can arrange a Market Appraisal through our national network of Hunters estate agents.

Hunters York

01904 756100
yorklettings@hunters.com

Apollo House, Eboracum Way,
York, YO31 7RE

HUNTERS EXCLUSIVE

