

## Coningham Road, W12

### £395,000

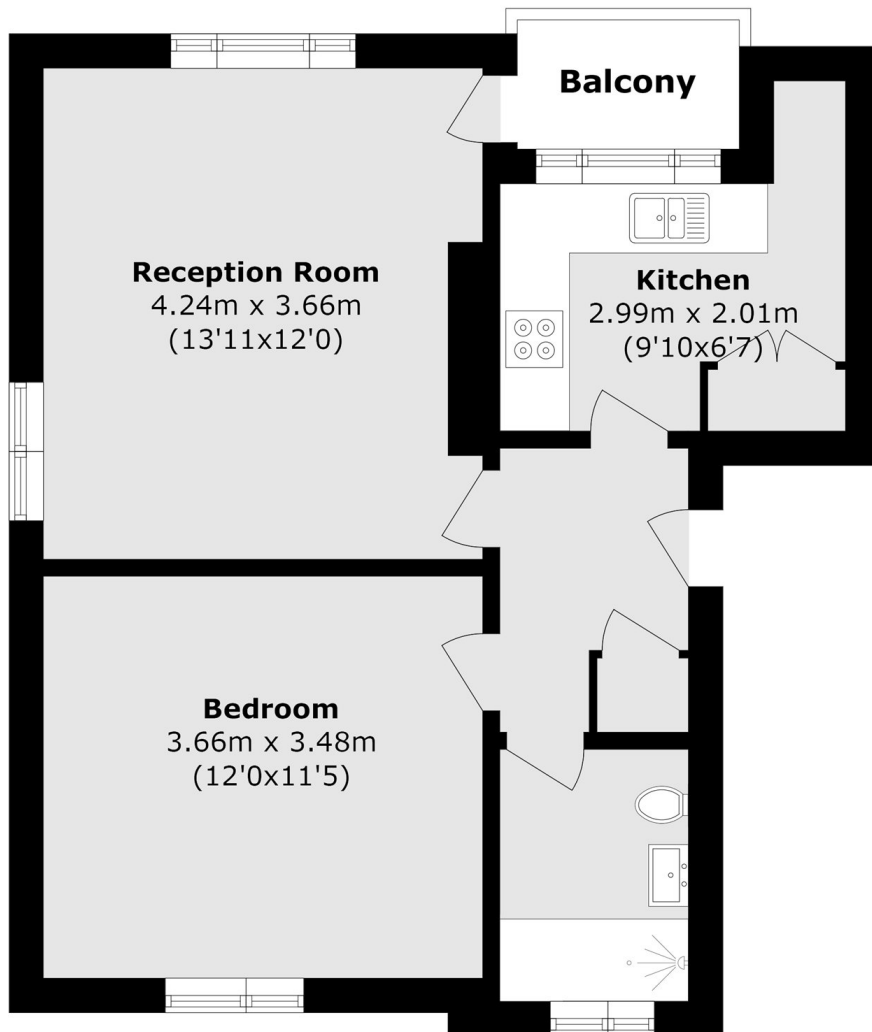
This bright one-bedroom apartment offers a separate kitchen and living space, opening onto a private balcony from the living area. An excellent opportunity for first-time buyers or investors alike.

Coningham Road provides easy access to all local amenities and is just under 0.5 miles from both Shepherds Bush Market and Goldhawk Road Stations.

### Features

- Tree Lined Street
- Wood Floors
- Modern Throughout
- Private Balcony
- Bright & Spacious
- Askew Village Close By

# Coningham Road, London, W12



Total area (approx.): 46.0 sq. m (495.1 sq. ft)  
(Excluding Balcony)

Balcony area (approx.): 2.3 sq. m (24.7 sq. ft)