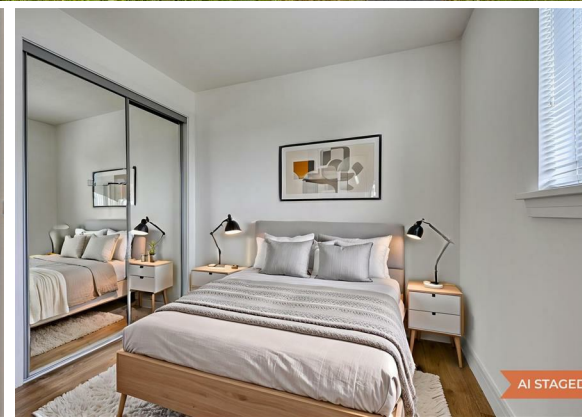




**77A Towerhill  
Crescent,  
Cradlehall,  
Inverness, IV2  
5GZ**

Offers Over £112,000



Fantastic opportunity to acquire this beautifully presented flat in the sought-after Cradlehall area of Inverness. Boasting a stylish, modern interior that has been upgraded throughout, this property is ideal for first-time buyers, investors or those looking for a home ready to move straight into. The bright and airy lounge features attractive contemporary panelling, creating a welcoming living space. The modern kitchen is fitted with a range of wall and base units and includes an integrated electric oven, electric hob, extractor hood and slimline dishwasher, with additional space for a freestanding washing machine and fridge/freezer. The double bedroom benefits from fitted wardrobes with mirrored sliding doors, while the contemporary shower room is finished to a high standard and features an electric shower and heated towel rail. Excellent storage is provided by a hallway cupboard and additional cupboard within the shower room. The property further benefits from electric heating and double glazing throughout. Externally, the flat is set within generous communal gardens and benefits from communal off-street parking. Offering modern accommodation in a popular residential area, this is an excellent opportunity for first-time buyers, buy-to-let investors or anyone seeking a low-maintenance home in move-in condition.

- Ground floor flat in popular area of Cradlehall
- Lounge, kitchen, double bedroom, shower room
- Ideal for first time buyers & investors
- Upgraded and finished to high standard throughout
- Communal gardens & communal off- street parking
- EPC band D



**Extras: All fitted floor coverings, fixtures and fittings, including all light fittings. Curtain poles and window blinds. Integrated appliances include the electric hob, electric oven, extractor, and dishwasher. Washing machine is available via separate negotiation.**

**Services: Mains water, drainage, and electricity Fibre broadband.**

**Council Tax: B**

**Floor Area: 462.85 sq ft**

**Viewing: Don't delay – get in touch with Tailormade Moves today to arrange a viewing**

The Greenhouse Beechwood  
Business Park  
Inverness  
Highland  
IV2 3BL

E: [info@tailormademoves.co.uk](mailto:info@tailormademoves.co.uk)  
T: 01463 233218

