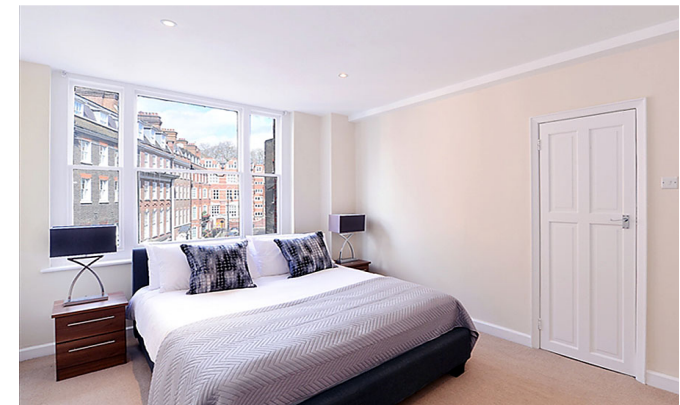




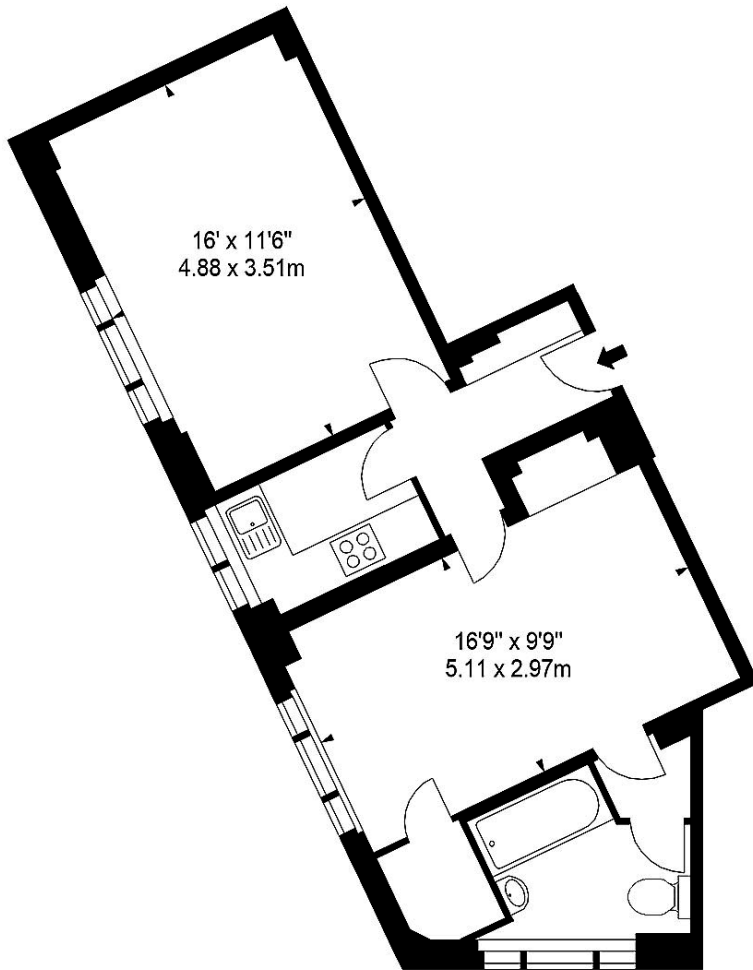
INTERLET

HILL STREET, MAYFAIR, LONDON W1J
£760 PW



A good-sized one double bedroom apartment on the third floor of this beautiful red brick building, situated in the heart of London's fashionable Mayfair, neighbouring the famous Berkeley Square. The apartment is set over 533sq ft. and offers a spacious reception room, good-sized double bedroom, modern, fully fitted kitchen, modern bathroom and ample storage space. Property is available Furnished or Unfurnished. Hill Street, benefits from spacious living accommodation, lift service, on-site building manager, CCTV, porter and is nestled conveniently between two of London's parks, Hyde Park and Green Park. The nearest underground stations are Green Park, Bond Street, and Marble Arch which are all within a short stroll away.[...]

l e t t i n g s @ i n t e r l e t . c o m
+ 4 4 (0) 2 0 7 7 9 5 6 5 2 5
w w w . i n t e r l e t . c o m



THIRD FLOOR

Important Notice

Interlet and their clients give notice that: 1) They are not authorised to make or give any representations or warranties in relation to the property, either here or else where. The particulars do not form part of any offer part of any offer or contract and must not be relied upon as statements or representations of fact. 2. Any areas, measurements, distances are approximate. The text, images and plans are for guidance only and are not necessarily comprehensive. It should not be assumed that the property has all necessary planning, building regulation or other contents and Interlet have not tested any services, equipment or facilities. Prospective tenants must satisfy themselves by inspection or otherwise. Please note that the local area may be affected by aircraft noise, you should make your own enquiries regarding any noise in the area before you make an offer.

iNTERLET
SALES & LETTINGS

Welcome home.