



Carson Avenue, Ellesmere Port CH65 4FA

welcome to

Carson Avenue, Ellesmere Port

This well-maintained three-bedroom semi-detached home sits in a quiet cul-de-sac and features a large private garden with decking, patios, and pergola. EV ready with parking for 3 cars, integrated garage, excellent storage, and a kitchen opening directly onto the garden. Call us today to view!



Step inside to a bright entrance hall leading to the lounge, kitchen/diner, stairs, and convenient downstairs WC. The lounge offers a comfortable family space with a fitted media wall and useful storage.

The kitchen/diner is where the home really shines. Skylights flood the space with natural light, while French doors with fitted blinds open directly onto the garden, creating a bright connection to the outdoors.

Upstairs, the main bedroom benefits from an en-suite and integrated wardrobes. Two further bedrooms also feature fitted storage and are served by a modern family bathroom. There's loft access via an integrated ladder, with part-boarded storage space.

Outside, the generous rear garden stands out from similar homes. A separate quartz patio with a metal louvre pergola creates a stylish outdoor living area, while the remaining garden provides plenty of room for children, entertaining, or relaxing without feeling cramped.

Well maintained and thoughtfully upgraded throughout, this home combines excellent parking, useful storage, EV readiness, and impressive outdoor space. It's ready to move into and designed for comfortable family living from day one.

If you've been searching for a home with practical upgrades, generous outdoor space and a layout that works effortlessly for modern family life, this property is worth viewing.

Entrance Hall

Lounge

17' 4" x 11' 2" (5.28m x 3.40m)

Kitchen

17' 6" x 10' 4" (5.33m x 3.15m)

Downstairs W.C

Landing

Bedroom One

10' 3" x 9' 10" (3.12m x 3.00m)

En-Suite

6' 7" x 6' (2.01m x 1.83m)

Bedroom Two

11' 10" x 9' 8" (3.61m x 2.95m)

Bedroom Three

9' 10" x 8' (3.00m x 2.44m)

Bathroom

Front Garden

Rear Garden

Garage

18' 8" x 10' 1" (5.69m x 3.07m)



view this property online [jonesandchapman.co.uk/Property/LSU108802](https://www.jonesandchapman.co.uk/Property/LSU108802)



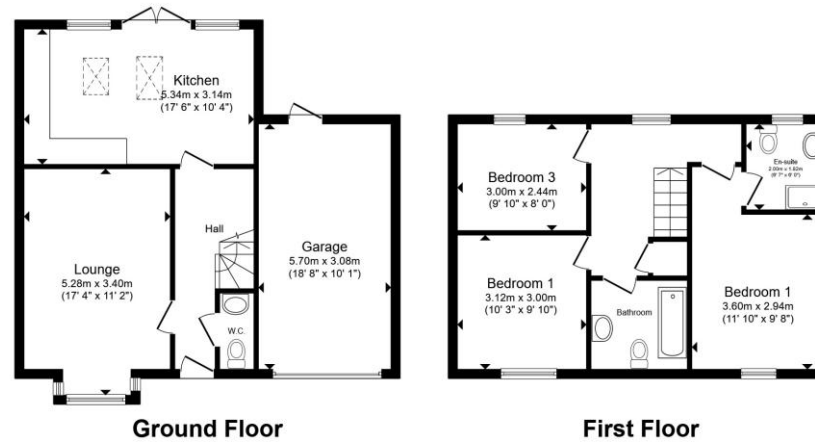
welcome to

Carson Avenue, Ellesmere Port

- Semi-Detached Family Home
- Three bedrooms With En-Suite To The Master
- Lounge, Kitchen & Family Bathroom
- Downstairs WC
- Off Road Parking & Garage

Tenure: Freehold EPC Rating: C

Council Tax Band: C



offers in excess of

£260,000

Total floor area 109.8 m² (1,182 sq.ft.) approx
This floor plan is for illustrative purposes only. It is not drawn to scale. Any measurements, floor areas (including any total floor area), openings and orientation are approximate. No details are guaranteed, they cannot be relied upon for any purpose and they do not form part of any agreement. No liability is taken for any error, omission or misstatement. A party must rely upon its own inspection(s). Powered by www.propertybox.io

jones & chapman



view this property online [jonesandchapman.co.uk/Property/LSU108802](https://www.jonesandchapman.co.uk/Property/LSU108802)

Please note the marker reflects the postcode not the actual property



Property Ref:
LSU108802 - 0005

1. MONEY LAUNDERING REGULATIONS Intending purchasers will be asked to produce identification documentation at a later stage and we would ask for your co-operation in order that there is no delay in agreeing the sale. 2. These particulars do not constitute part or all of an offer or contract. 3. The measurements indicated are supplied for guidance only and as such must be considered incorrect. Potential buyers are advised to recheck measurements before committing to any expense. 4. We have not tested any apparatus, equipment, fixtures or services and it is in the buyers interest to check the working condition of any appliances. 5. Where an EPC, or a Home Report (Scotland only) is held for this property, it is available for inspection at the branch by appointment. If you require a printed version of a Home Report, you will need to pay a reasonable production charge reflecting printing and other costs. 6. We are not able to offer an opinion either written or verbal on the content of these reports and this must be obtained from your legal representative. 7. Whilst we take care in preparing these reports, a buyer should ensure that his/her legal representative confirms as soon as possible all matters relating to title including the extent and boundaries of the property and other important matters before exchange of contracts.

jones & chapman



0151 339 4878



LittleSutton@jonesandchapman.co.uk



349 Chester Road, Little Sutton, LITTLE SUTTON, Cheshire, CH66 3RG



[jonesandchapman.co.uk](https://www.jonesandchapman.co.uk)