



Let **UK** Home

2 Bedrooms

Flat

Located in London

£4,247 Per Month



info@letukhome.co.uk

<https://www.letukhome.co.uk/>

01795 358 886



4B Merchant Square East London

W2 1AN



Let UK Home are excited to present this interior designed two bedroom, two bathroom apartment, set within the heart of the Paddington Basin and close to the popular West End Quay.

The apartment is situated on the fourth floor of this prestigious building which features a concierge, lift service, and secure underground parking.

The stunning apartment comprises spacious living and entertaining space with a beautiful reception room with superb views, a splendid modern fitted open plan kitchen, two bedrooms, two bathrooms and ample storage space.

The apartment offers easy access to superb transport links such as Paddington Train Station (Bakerloo, Hammersmith & City, Circle, District lines and Heathrow) Edgware Road (Circle, District and Bakerloo lines).

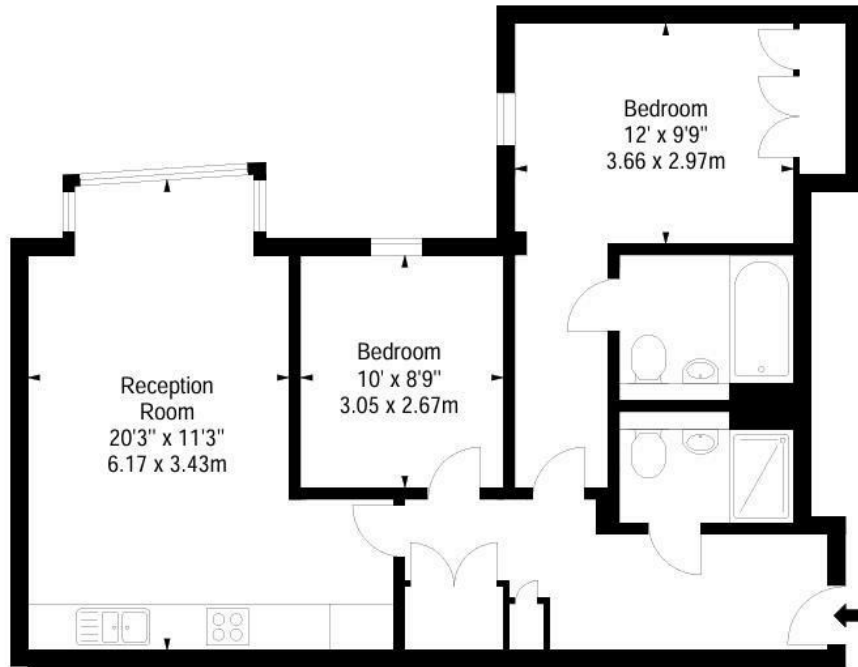
4B Merchant Square East London

£4,247 Per Month



- 4th Floor
- Private underground parking spaces
- Four minute walk from Edgware Road underground station
- CCTV
- Concierge service
- Available Furnished or Unfurnished
- Lift
- EPC Rating:B





Let **UK** Home

3F 2 Eastbourne Terrace
 Paddington
 London
 W2 6LG

01795 358 886

info@letukhome.co.uk

Council Tax Band:

Local Authority:

Agents Note: Whilst every care has been taken to prepare these particulars, they are for guidance purposes only. All measurements are approximate and are for general guidance purposes only and whilst every care has been taken to ensure their accuracy, they should not be relied upon and potential buyers/tenants are advised to recheck the measurements.

Energy Efficiency Rating		Current	Potential
Very energy efficient - lower running costs			
(92 plus) A			
(81-91) B			
(69-80) C		83	83
(55-68) D			
(39-54) E			
(21-38) F			
(1-20) G			
Not energy efficient - higher running costs			
England & Wales	EU Directive 2002/91/EC		

<https://www.letukhome.co.uk/>