

# £1,000 pcm

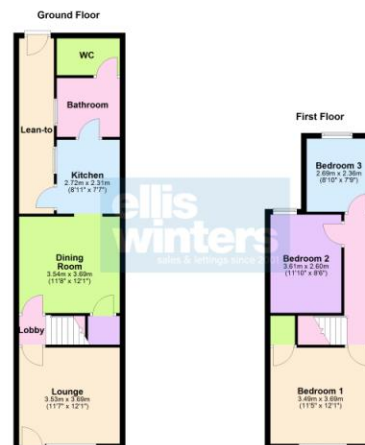
69 Norwood Road, March, PE15 8PX



To arrange a viewing call us now on 01354 701000

Deposit £1,150

Available the start of May! This end terraced home is larger than it looks! Accommodation includes lounge and SEPARATE DINING ROOM, kitchen, bathroom and THREE GOOD SIZE BEDROOMS. Outside there is a generous garden laid to decking and lawn. EPC D



# £1,000 pcm

69 Norwood Road, March, PE15 8PX

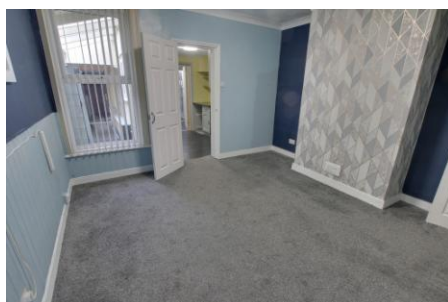


## Ground Floor

**Lounge**  
3.69m (12'1") x 3.53m (11'7")  
Window to front, radiator.

**Lobby**  
Stairs to first floor.

**Dining Room**  
3.69m (12'1") x 3.54m (11'8")  
Storage cupboard, window to rear, radiator.



**Kitchen**  
2.72m (8'11") x 2.31m (7'7")  
Wall and base units, gas cooker point, sink unit, plumbing for washing machine, window to side, door to side.

**Lean-to**  
Door to rear.



**Bathroom**  
Fitted with bath, mixer tap shower, wash hand basin and WC, heated towel rail.

## First Floor

**Bedroom 1**  
3.69m (12'1") x 3.49m (11'5")  
Window to front, radiator, cupboard.

**Bedroom 2**  
3.61m (11'10") x 2.60m (8'6")  
Window to rear, radiator.



**Bedroom 3**  
2.69m (8'10") x 2.36m (7'9")  
Window to rear, radiator.

**Outside**  
The garden is laid to decking and grass.

**Freehold**  
Council tax band A



ellis winters 52 High Street, March, Cambridgeshire, PE15 9JR  
Tel: 01354 701000 Email: [info@elliswinters.co.uk](mailto:info@elliswinters.co.uk) [www.elliswinters.co.uk](http://www.elliswinters.co.uk)