

Home report

London Road, West Kingsdown, Sevenoaks, Kent, England,
United Kingdom, TN15 6EX



Total Area: 1630 sq. ft

Ground Floor: 1427 sq. ft, 1st Floor: 203 sq. ft

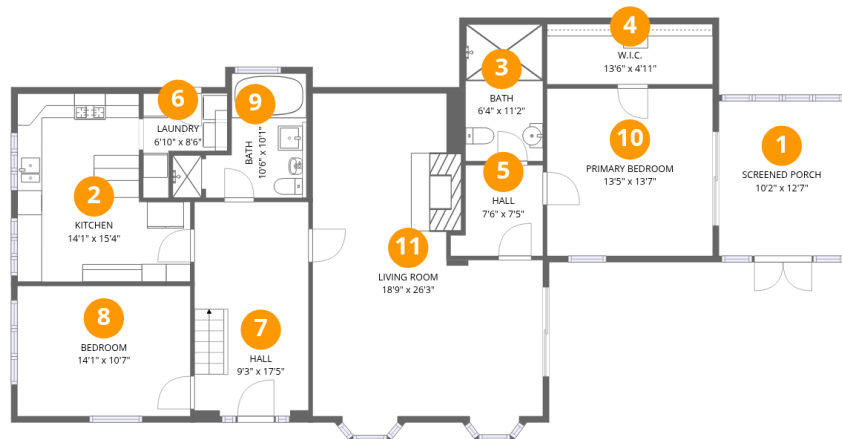
Excluded: Screened porch 129 sq. ft, Embedded window 13 sq. ft, Open to below 404 sq. ft, Low ceiling 113 sq. ft, Walls: 171 sq. ft

Property summary



Home report

London Road, West Kingsdown, Sevenoaks, Kent, England,
United Kingdom, TN15 6EX



Room dimensions

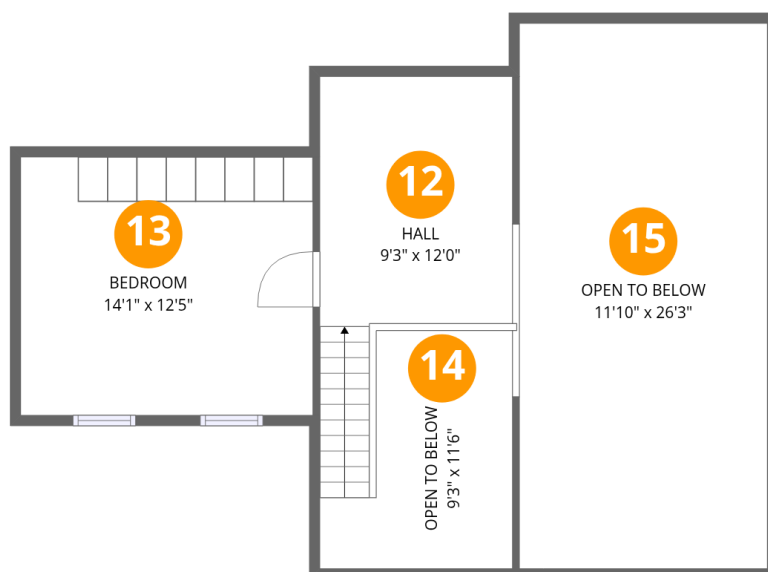
Floor 1

Total:1427sqft Excluded: 142sqft

#		Dimensions	sqft	Counted as living area
1	Screened Porch	10'2" x 12'7"	128 sq. ft	No
2	Kitchen	14'1" x 15'4"	215 sq. ft	Yes
3	Bath	6'4" x 11'2"	70 sq. ft	Yes
4	W.I.C.	13'6" x 4'11"	66 sq. ft	Yes
5	Hall	7'6" x 7'5"	55 sq. ft	Yes
6	Laundry	6'10" x 8'6"	58 sq. ft	Yes
7	Hall	9'3" x 17'5"	162 sq. ft	Yes
8	Bedroom	14'1" x 10'7"	149 sq. ft	Yes
9	Bath	10'6" x 10'1"	106 sq. ft	Yes
10	Primary Bedroom	13'5" x 13'7"	183 sq. ft	Yes
11	Living Room	18'9" x 26'3"	491 sq. ft	Yes

Home report

London Road, West Kingsdown, Sevenoaks, Kent, England,
United Kingdom, TN15 6EX



Room dimensions

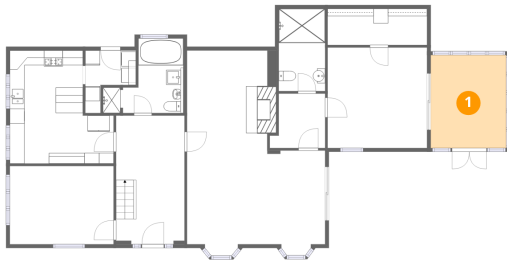
Floor 2

Total:203sqft

Excluded: 517sqft

#		Dimensions	sqft	Counted as living area
12	Hall	9'3" x 12'0"	111 sq. ft	Yes
13	Bedroom	14'1" x 12'5"	174 sq. ft	Yes
14	Open To Below	9'3" x 11'6"	106 sq. ft	No
15	Open To Below	11'10" x 26'3"	311 sq. ft	No

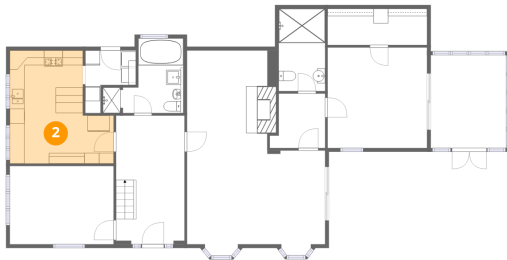
1 Floor 1 - Screened Porch



Dimensions: 10'2" x 12'7"
Area: 128 sq. ft
Counted as living area: No

Heated: No
Finished: No
Enclosed: No
Contiguous: Yes
Permitted: Yes
Wet space: No
Addition: No
Conversion: No

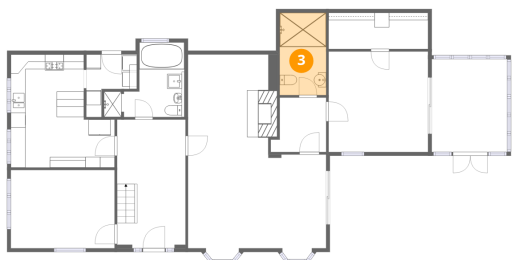
2 Floor 1 - Kitchen



Dimensions: 14'1" x 15'4"
Area: 215 sq. ft
Counted as living area: Yes

Heated: Yes
Finished: Yes
Enclosed: Yes
Contiguous: Yes
Permitted: Yes
Wet space: No
Addition: No
Conversion: No

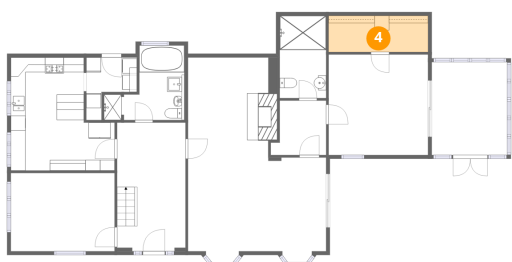
3 Floor 1 - Bath



Dimensions: 6'4" x 11'2"
Area: 70 sq. ft
Counted as living area: Yes

Heated: Yes
Finished: Yes
Enclosed: Yes
Contiguous: Yes
Permitted: Yes
Wet space: Yes
Addition: No
Conversion: No

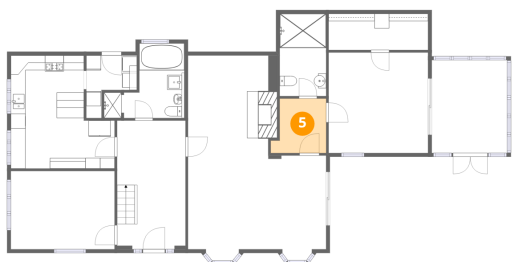
4 Floor 1 - W.I.C.



Dimensions: 13'6" x 4'11"
Area: 66 sq. ft
Counted as living area: Yes

Heated: Yes
Finished: Yes
Enclosed: Yes
Contiguous: Yes
Permitted: Yes
Wet space: No
Addition: No
Conversion: No

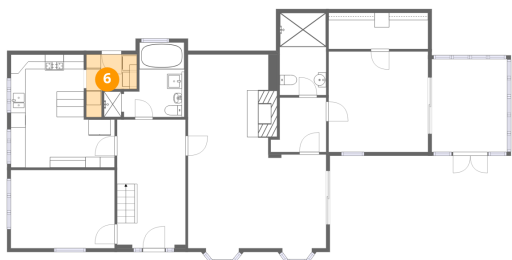
5 Floor 1 - Hall



Dimensions: 7'6" x 7'5"
Area: 55 sq. ft
Counted as living area: Yes

Heated: Yes
Finished: Yes
Enclosed: Yes
Contiguous: Yes
Permitted: Yes
Wet space: No
Addition: No
Conversion: No

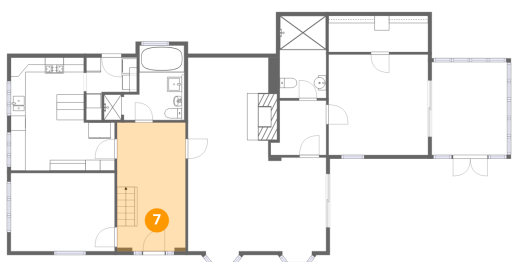
6 Floor 1 - Laundry



Dimensions: 6'10" x 8'6"
Area: 58 sq. ft
Counted as living area: Yes

Heated: Yes
Finished: Yes
Enclosed: Yes
Contiguous: Yes
Permitted: Yes
Wet space: No
Addition: No
Conversion: No

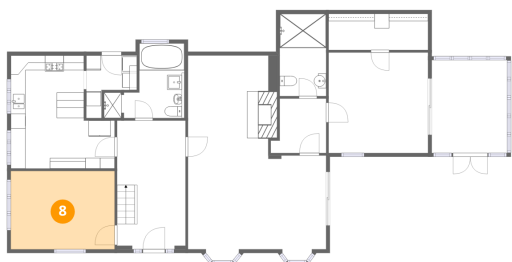
7 Floor 1 - Hall



Dimensions: 9'3" x 17'5"
Area: 162 sq. ft
Counted as living area: Yes

Heated: Yes
Finished: Yes
Enclosed: Yes
Contiguous: Yes
Permitted: Yes
Wet space: No
Addition: No
Conversion: No

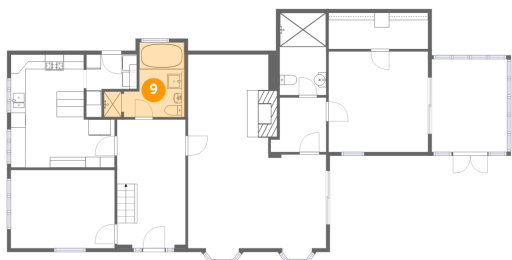
8 Floor 1 - Bedroom



Dimensions: 14'1" x 10'7"
Area: 149 sq. ft
Counted as living area: Yes

Heated: Yes
Finished: Yes
Enclosed: Yes
Contiguous: Yes
Permitted: Yes
Wet space: No
Addition: No
Conversion: No

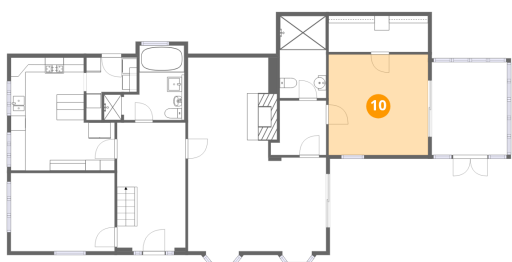
9 Floor 1 - Bath



Dimensions: 10'6" x 10'1"
Area: 106 sq. ft
Counted as living area: Yes

Heated: Yes
Finished: Yes
Enclosed: Yes
Contiguous: Yes
Permitted: Yes
Wet space: Yes
Addition: No
Conversion: No

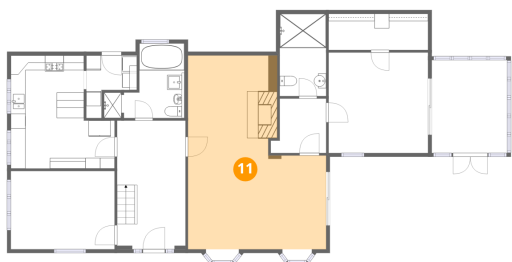
10 Floor 1 - Primary Bedroom



Dimensions: 13'5" x 13'7"
Area: 183 sq. ft
Counted as living area: Yes

Heated: Yes
Finished: Yes
Enclosed: Yes
Contiguous: Yes
Permitted: Yes
Wet space: No
Addition: No
Conversion: No

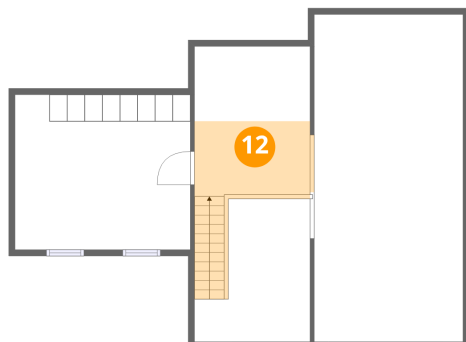
11 Floor 1 - Living Room



Dimensions: 18'9" x 26'3"
Area: 491 sq. ft
Counted as living area: Yes

Heated: Yes
Finished: Yes
Enclosed: Yes
Contiguous: Yes
Permitted: Yes
Wet space: No
Addition: No
Conversion: No

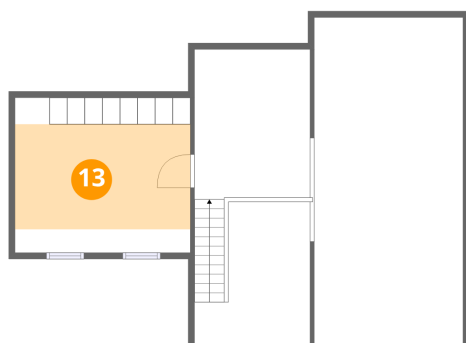
12 Floor 2 - Hall



Dimensions: 9'3" x 12'0"
Area: 111 sq. ft
Counted as living area: Yes

Heated: Yes
Finished: Yes
Enclosed: Yes
Contiguous: Yes
Permitted: Yes
Wet space: No
Addition: No
Conversion: No

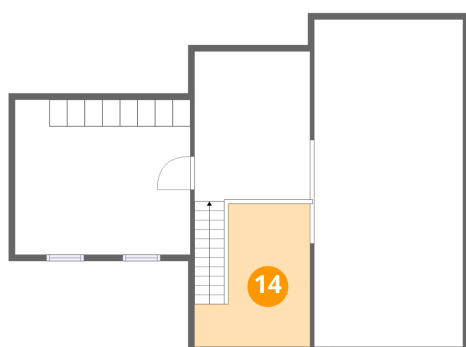
13 Floor 2 - Bedroom



Dimensions: 14'1" x 12'5"
Area: 174 sq. ft
Counted as living area: Yes

Heated: Yes
Finished: Yes
Enclosed: Yes
Contiguous: Yes
Permitted: Yes
Wet space: No
Addition: No
Conversion: No

14 Floor 2 - Open To Below



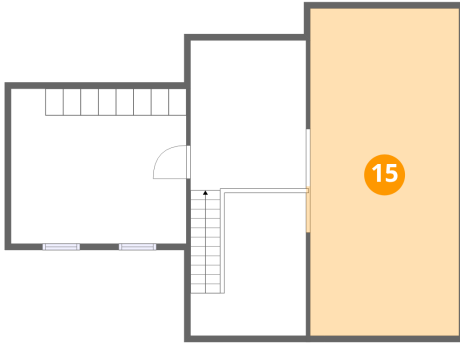
Dimensions: 9'3" x 11'6"
Area: 106 sq. ft
Counted as living area: No

Heated: No
Finished: No
Enclosed: No
Contiguous: Yes
Permitted: No
Wet space: No
Addition: No
Conversion: No

Home report

London Road, West Kingsdown, Sevenoaks, Kent, England,
United Kingdom, TN15 6EX

15 Floor 2 - Open To Below



Dimensions: 11'10" x 26'3"
Area: 311 sq. ft
Counted as living area: No

Heated: No
Finished: No
Enclosed: No
Contiguous: Yes
Permitted: No
Wet space: No
Addition: No
Conversion: No