



WETHERELL
MAYFAIR'S FINEST PROPERTIES



Grosvenor Square, W1K

£12,783 PCM

This beautiful apartment is set within an exclusive purpose built building featuring a 24 hour porter and two passenger lifts.

The well arranged layout includes a generous reception room ideal for both relaxing and entertaining, a separate kitchen with access to a private balcony, a principal bedroom with en suite bathroom, two additional bedrooms, a family bathroom, and a guest WC.

The property further benefits from a private sixth floor storeroom and secure underground parking, providing both convenience and peace of mind.

Grosvenor Square is one of the most prestigious addresses in London, located in the heart of Mayfair. It is located just moments from exclusive private members clubs such as Annabel's and famous restaurants such as Sexy Fish. There is an abundance of designer retailers along Old Bond Street and on Mount Street, as well as



FEATURES

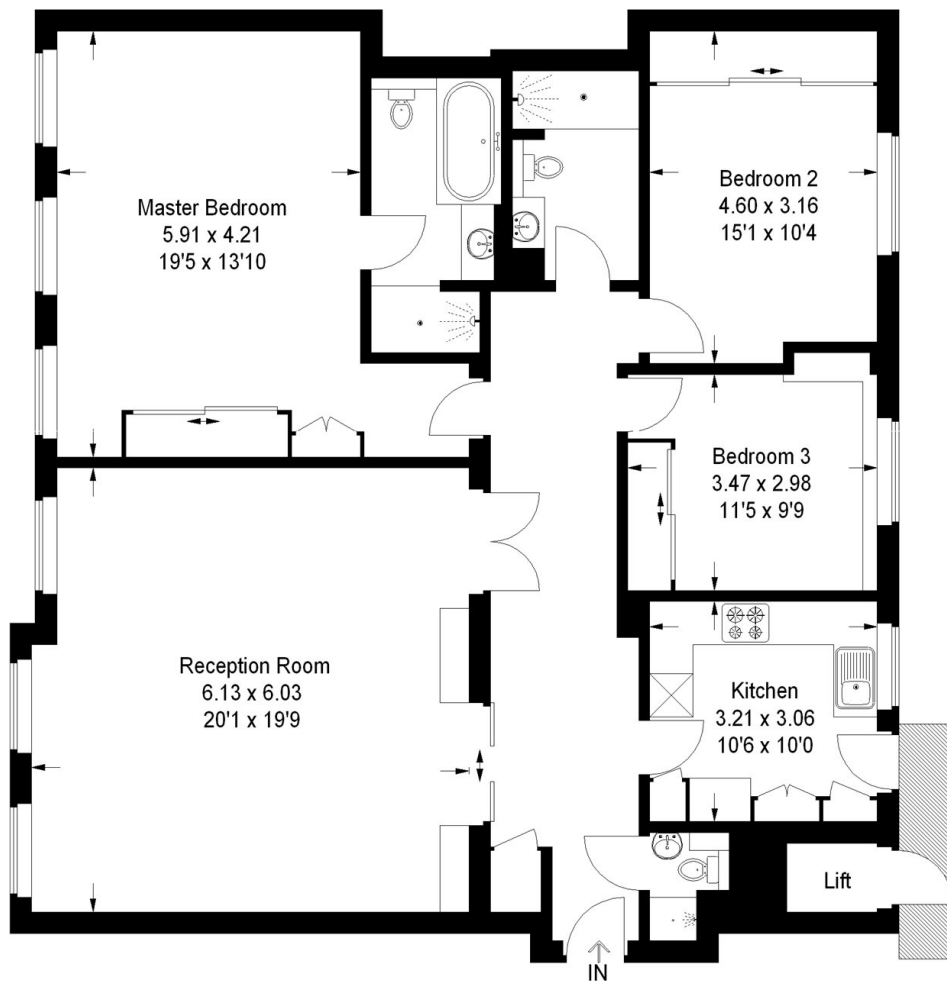
- Three Bedrooms • Two Bathrooms • Wooden Flooring • Balcony • Concierge • Excellent Location •



Grosvenor Square, London, W1K

Grosvenor Square, W1K

Approximate Gross Internal Area
135.8 sq m / 1462 sq ft



Third Floor

Illustration for identification purposes only, measurements are approximate,
not to scale. FloorplansUsketch.com © 2015 (ID140714)



WETHERELL
MAYFAIR'S FINEST PROPERTIES

102 Mount Street,
London, W1K 2TH

T: 020 7529 5588
E: rentals@wetherell.co.uk

We aim to make our particulars both accurate and reliable. However they are not guaranteed; nor do they form part of an offer or contract. If you require clarification on any points then please contact us, especially if you're traveling some distance to view. Please note that appliances and heating systems have not been tested and therefore no warranties can be given as to their working order.



wetherell.co.uk