



**MK**  
ESTATES

10 Burnham Drive, Bournemouth  
£485,000

# 10 Burnham Drive

Bournemouth, Bournemouth

Council Tax band: TBD

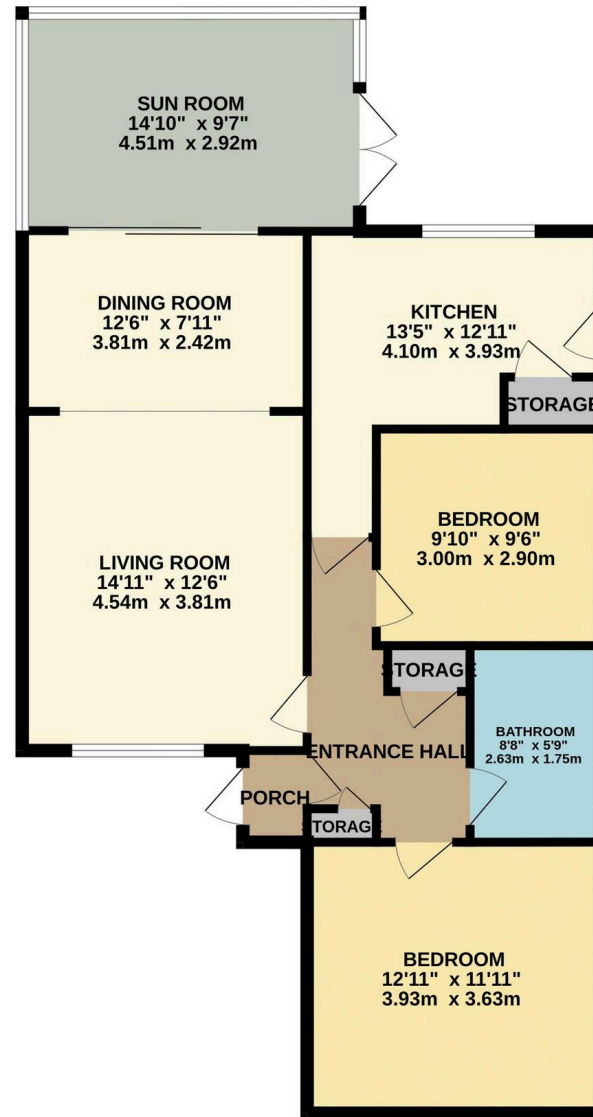
Tenure: Freehold

- Well Maintained Detached Bungalow In Charming Cul De Sac
- Queens Park Area
- Front Driveway Providing Off Road Parking And Garage With Electric Door
- Sunny Aspect Garden With Summer House
- Two Double Bedrooms
- Close Proximity To JP Morgan, Bournemouth Hospital, Castle Point Shopping Centre & Other Amenities
- Bright & Airy Lounge With Doors Leading To Spacious Conservatory
- In Need Of Modernisation
- Catchment For Several Primary/Secondary Schools Including Bournemouth Boy/Girl Grammar
- Well Equipped Kitchen With Traditional Aga Overlooking The Garden





GROUND FLOOR  
938 sq.ft. (87.1 sq.m.) approx.



TOTAL FLOOR AREA : 938 sq.ft. (87.1 sq.m.) approx.

Whilst every attempt has been made to ensure the accuracy of the floorplan contained here, measurements of doors, windows, rooms and any other items are approximate and no responsibility is taken for any error, omission or mis-statement. This plan is for illustrative purposes only and should be used as such by any prospective purchaser. The services, systems and appliances shown have not been tested and no guarantee as to their operability or efficiency can be given.  
Made with Metropix ©2026