



Montpelier Grove, NW5

£1,050,000

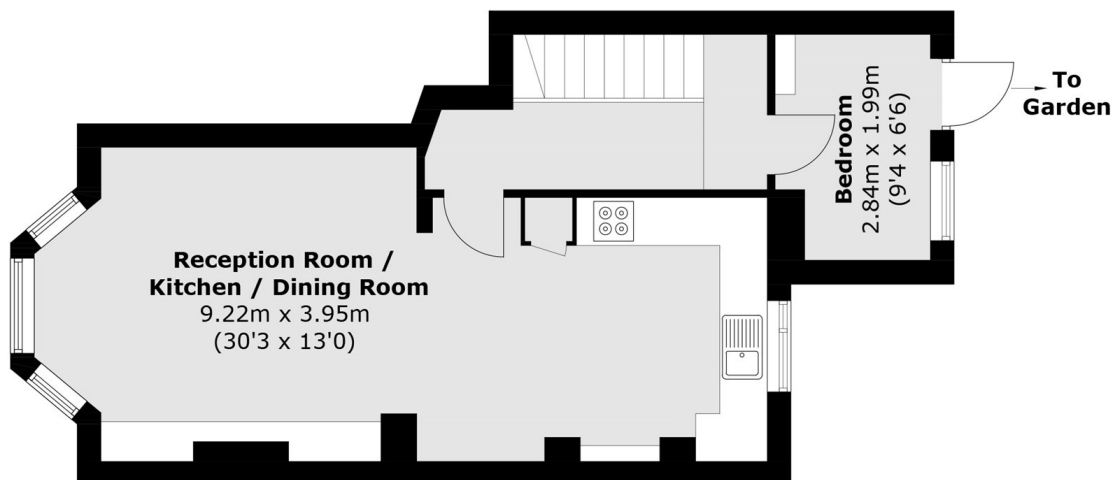
On one of Kentish Town's most sought after roads is this two double bedroom maisonette with access to a private garden. The property is in great condition throughout, and has a separate office room or nursery.

Montpelier Grove offers easy access to the shopping hubs of both Kentish Town and Tufnell Park, as well as the green open spaces of Hampstead Heath. Kentish Town station is within half a mile.

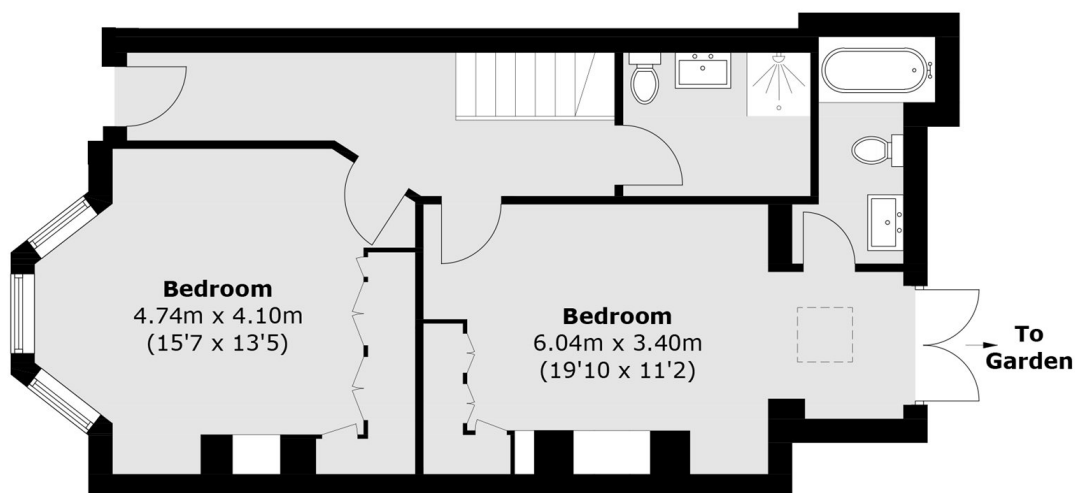
Features

- Two Double Bedrooms
- Private Garden
- Office Room
- Share Of Freehold
- Chain Free
- Private Entrance

Montpelier Grove, London, NW5



Ground Floor



Lower Ground Floor

Total area (approx.): 102.2 sq. m (1,100.1 sq. ft)