

Property ref: 171750

Westbourne Terrace, Reading, RG30 2RP

£2,250 PCM

HASLAM'S
Lettings



A beautifully presented 3 to 4 bedroom detached house in West Reading. The stunning property benefits from a smart converted garage, driveway parking and 2 modern bathrooms. To the rear is a large landscaped south-westerly facing garden.

Reading Borough Council tax band D.

Broadband/Mobile Info: Connections available. For an indication of specific speeds and supply of Broadband and Mobile, we advise applicants go to the Ofcom website Broadband and Mobile Coverage Checker.

Available 01/07/2026

- Stunning 3/4 bedroom detached house; Furnished
- Converted garage; Landscaped garden
- Driveway parking; Fitted kitchen with appliances
- Open plan living/dining area; EPC rating C
- Close to Reading West train station and local amenities
- Gas central heating; Managed by HASLAM'S

*Fees For Assured Shorthold Tenancies: when you rent a property from us you will be required to pay a sum equivalent to one weeks' rent for a holding deposit. Upon successful application, this amount will be off set against your first months' rent. You will also be required to pay a security deposit equivalent to 5 weeks' rent which will be held and protected in line with Deposit legislation. For more information about our fees please visit: www.haslams.net
Fees for all other tenancies (Non Housing Act Tenancies / Company Lets): when you rent a property from us we will charge you a one-off fee per property. This charge is the equivalent of 15 days of the monthly rental charge (+VAT) with a minimum fee of £450 (inc.VAT) up to a maximum of £650 (inc.VAT). Other fees may apply depending on your circumstances.

0118 960 1055

lettings@haslams.net www.haslams.net

Haslams Estate Agents Ltd, 159 Friar Street, Reading, Berkshire, RG1 1HE

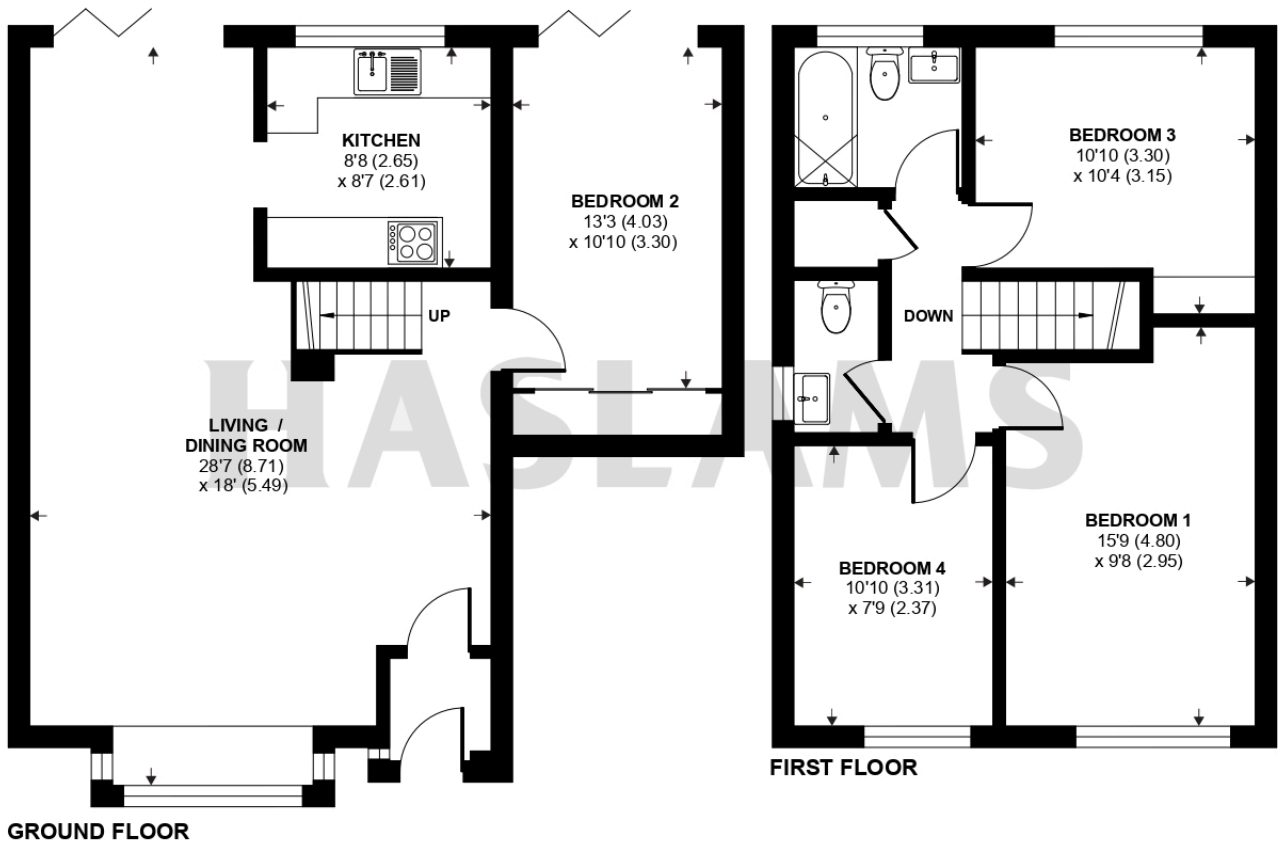




Westbourne Terrace, Reading, RG30

Approximate Area = 1098 sq ft / 102 sq m

For identification only - Not to scale



 Floor plan produced in accordance with RICS Property Measurement 2nd Edition, Incorporating International Property Measurement Standards (IPMS2 Residential). © nchecon 2025. Produced for Haslam's. REF: 1293283