



Leverson Street, SW16

£750,000

Dexters



Leverson Street, SW16

OFFERS OVER Filled with plenty of period charm is this three bedroom freehold house located on this quiet residential street. Offering any purchaser a great family home, this property has three double bedrooms with the top bedroom featuring an en-suite, fitted wardrobes and eaves storage. There is also a modern family bathroom on the first floor.

Downstairs there is a open-plan layout with a bright reception fitted with alcove storage and feature fireplace. This leads through to the kitchen diner with double doors onto the landscaped sunny garden.

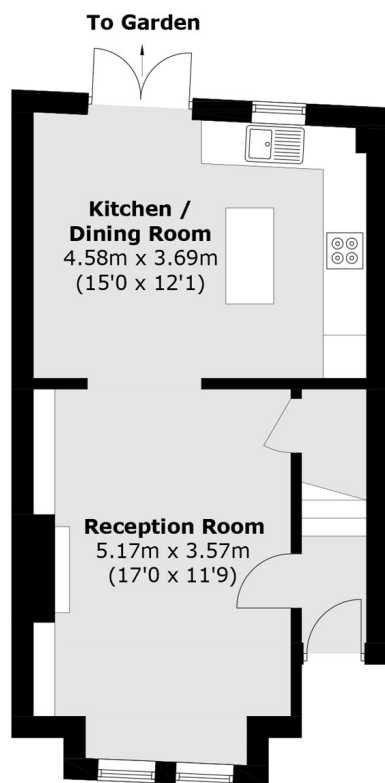
Leverson Street is a quiet residential street offering easy access to Streatham Common Station, which has regular services into London Victoria via Clapham Junction and also London Bridge. Both Streatham and Tooting Bec Commons are also nearby. Local schools like Penwortham primary School, Furzedown primary and Graveney secondary school are also close by.

Features

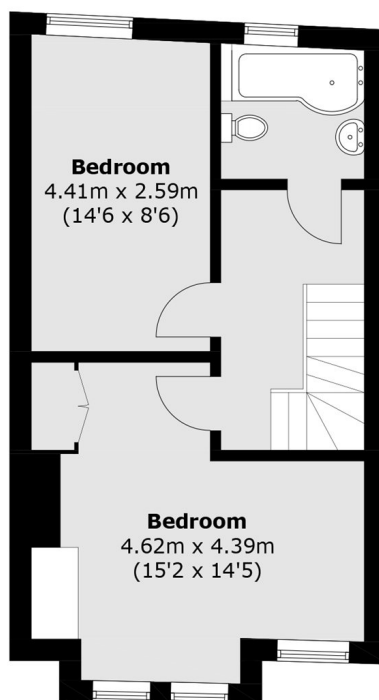
- Three Bedrooms
- Freehold House
- Private Garden
- Open-Plan Living
- Two Bathrooms
- Close to Station



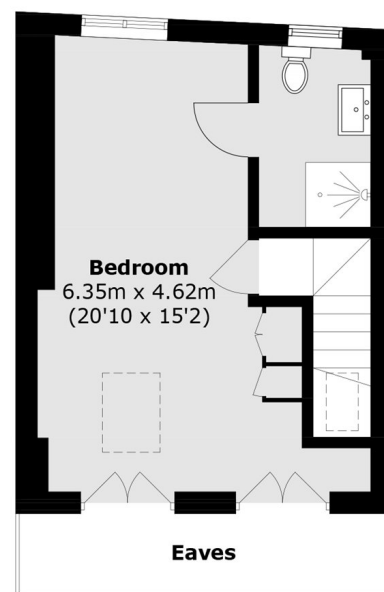
Leverson Street, London, SW16



Ground Floor



First Floor



Second Floor

Total area (approx.): 106.1 sq. m (1,142.0 sq. ft)
(Excluding Eaves & No Access)