



## Wyfold Road, SW6

### £850,000

An exceptionally designed 2 bedroom, 2 bathroom duplex in this brand new development, with stunning internal features and integrated appliances. Allocated parking spaces are also available.

Built by Fruition Properties, winners of the Property Developer of the Year 2024 award as voted by FDI Insider. This award reflects their consistent delivery of exceptional development projects across the capital.

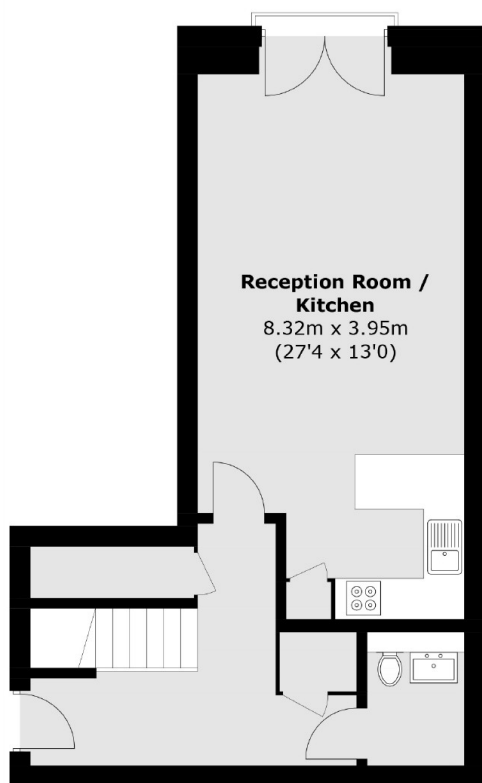
**\*\*Please note - Whilst every effort has been made to accurately portray the development, CGI images have been used, alongside indicative floorplans produced from the planning documents.\*\***

Excellent public transportation close by, including the District and Piccadilly Line's, accessed by stations at Hammersmith, Barons Court and Earls Court. Parsons Green and Fulham Broadway are the nearest

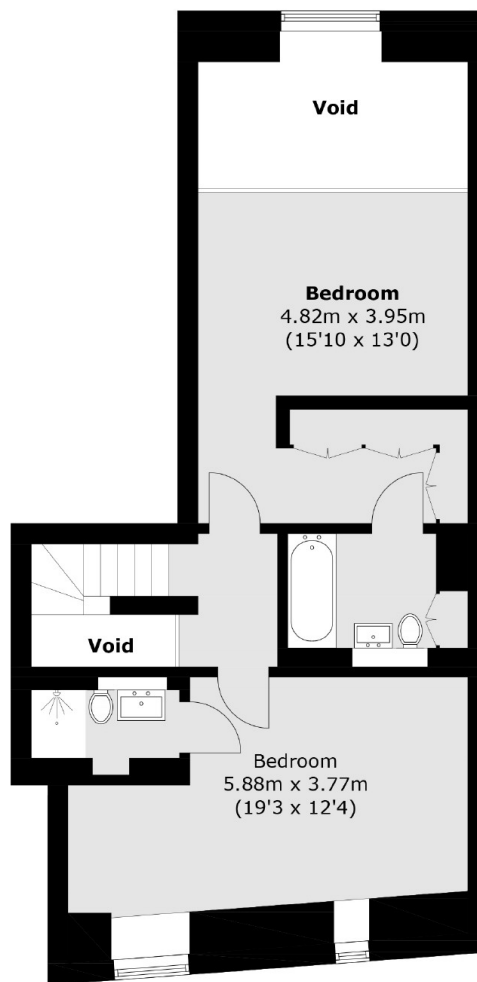
### Features

- Duplex Apartment
- Large Kitchen/Diner
- Two Bedrooms Two Bathrooms
- Bespoke Metris Kitchen
- Underfloor Heating
- Fulham/Hammersmith
- Dressing Room
- Downstairs W.C + Utility

# Wyfold Road, Fulham, SW6



**First Floor**



**Second Floor**

Total area (approx.): 100.6 sq. m (1082.8 sq. ft)  
(Excluding Void)