



**Latchmere Road, SW11**

**£650,000**

**Dexters**



## Latchmere Road, SW11

A spacious period conversion measuring just shy of 1,000 sq ft. Arranged to include a large reception room, private outside space (roof terrace), kitchen, three double bedrooms and a family bathroom. The property is being sold chain free.

You enter the flat on the first floor, with stairs rising to the second floor where the accommodation is arranged. At the front of the property is a generous room that works equally well as a large bedroom or an impressive reception room, offering excellent flexibility. Moving through, the kitchen sits just off the central hallway, with the living space flowing comfortably around it. To the rear, a further bedroom opens directly onto the balcony, creating a lovely indoor/outdoor feel. Two additional well-proportioned bedrooms and a family bathroom complete the layout.

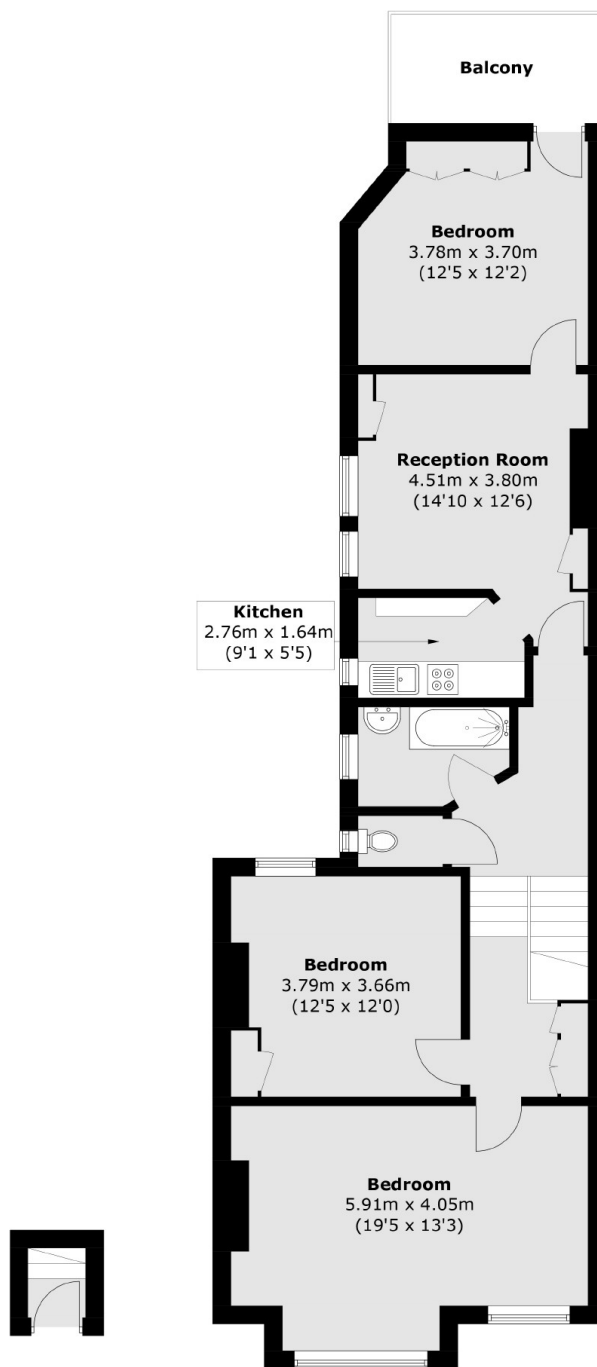
Latchmere Road is a sought after street just off Lavender Hill located near some of the areas best schools. Northcote Road is close by with an array of bars, restaurants and cafés. Transport links can be found at Clapham Common and Clapham Junction alongside local bus routes with access to the beautiful Battersea Park, Iconic Battersea Power Station & busy Sloane Square.

### Features

- Victorian Conversion
- Spacious Reception Room
- Three Double Bedrooms
- Private Roof Terrace
- Superb Location
- Chain Free



# Latchmere Road, London, SW11



## First Floor

## Second Floor

Total area (approx.): 90.5 sq. m (974.1 sq. ft)  
Balcony: 6.3 sq. m (67.8 sq. ft)

# Dexters

Northcote Road  
93 St. John's Road  
London  
SW11 1QY  
Sales  
020 7483 6333

Energy Rating: E. We aim to make our particulars both accurate and reliable. However they are not guaranteed; nor do they form part of an offer or contract. If you require clarification on any points then please contact us, especially if you're traveling some distance to view. Please note that appliances and heating systems have not been tested and therefore no warranties can be given as to their good working order.

 **RICS** | Regulated  
Estate Agent  
and Letting Agent

[dexters.co.uk](https://www.dexters.co.uk)