



## Borough High Street, SE1

### £550,000

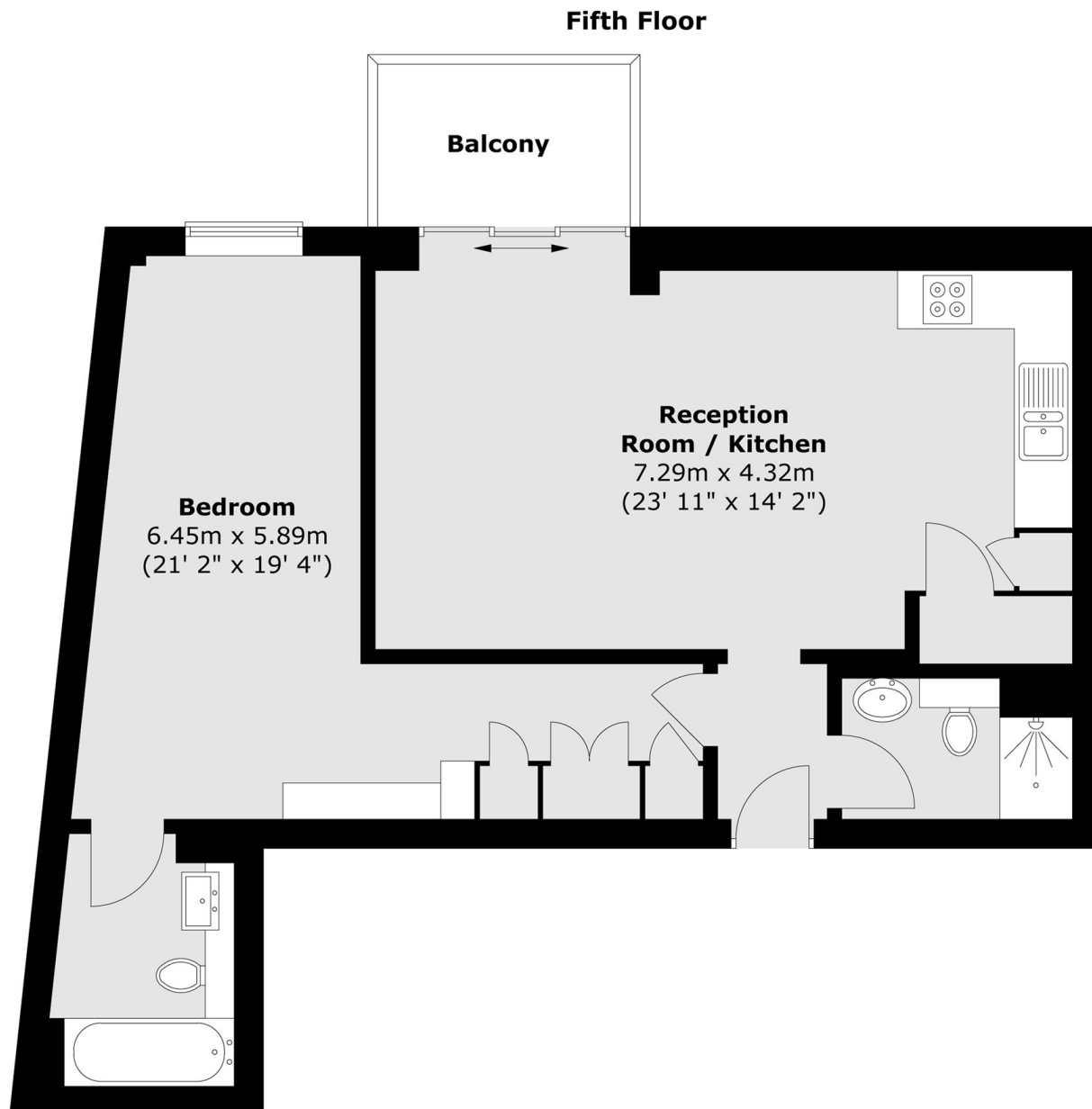
Situated on the fifth floor of a boutique SE1 development, this highly attractive apartment is designed for comfort and style. The property features a generously proportioned open-plan living room with a premium, high-spec kitchen, providing direct access to a private balcony, with superb westerly views. Accommodation includes a large double bedroom, two bathrooms and ample built-in storage throughout.

Bridgegate House boasts an enviable SE1 location, discreetly set back from the lively Borough High Street. Residents benefit from effortless access to the world-renowned Borough Market, the cultural hub of the South Bank, and a vast array of central attractions and premium amenities.

### Features

- Expansive Skyline Views
- Fifth Floor Flat
- Large Living Room & Kitchen
- 684 Sq Ft
- Private Balcony
- West Facing

# Borough High Street, London, SE1



Total area (approx.) : 63.6 sq. m (684 sq. ft)  
Total balcony area (approx.) : 4.7 sq. m (50 sq. ft)