



Tremadoc Road
Clapham, SW4

CHESTERTONS





A well presented Victorian conversion flat. Located in a highly desirable residential road off Clapham High Street, the flat benefits from two evenly sized double bedrooms and is neutrally decorated throughout.

- A well presented Victorian conversion flat
- Second floor
- Neutrally decorated throughout
- Separate modern kitchen
- Living room
- Two double bedrooms

£2,250 pcm

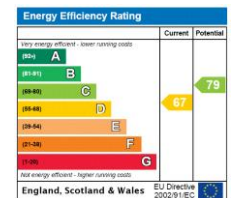
Additional tenant charges apply (fees apply to non-AST tenancies only)

Tenancy Agreement Fee: £300

References per Tenant/Guarantor: £60

Inventory check (approx. £100 – £250 inc. VAT)

chestertons.co.uk/property-to-rent/applicable-fees

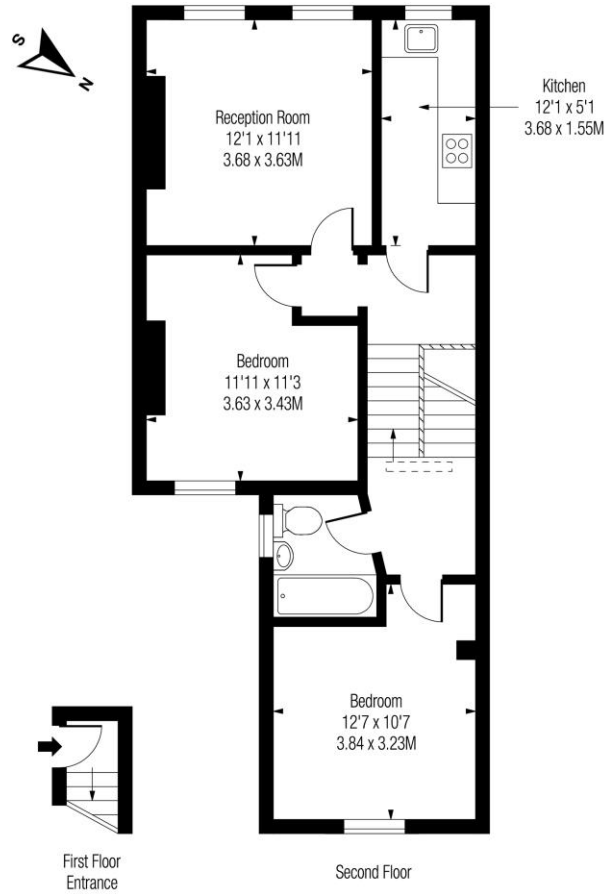


Minimum Term: 12 months
Deposit Required: Five weeks
Local Authority: Lambeth
Council Tax Band: D
EPC Rating: D
Furnished

Chestertons JP Clapham Common Lettings

chestertons.co.uk

Tremadoc Road, SW4



Approx Gross Internal Area

636 Sq Ft - 59.09 Sq M

Includes Limited Use Area - 10 Sq Ft
Drawn in accordance with IPMS 3B: Residential
Illustration For Identification Purposes Only - Not to Scale
www.homespacestudio.co.uk - Ref. No. 51114



Chesterton Global Ltd trading as Chestertons for themselves and for the vendor of this property whose agents they are, give notice that (i) these particulars do not constitute any part of an offer or contract, (ii) all statements contained within these particulars are made without responsibility on the part of Chestertons or the vendor, (iii) whilst made in good faith, none of the statements contained within these particulars are to be relied upon as a statement or representation of fact, (iv) any intending purchasers must satisfy themselves by inspection or otherwise as to the correctness of each of the statements contained within these particulars, (v) the vendor does not make or give either Chestertons or any person in their employment any authority to make or give representation or warranty whatsoever in relation to this property. Wide angle lenses may be used. ©Copyright Chestertons | Chesterton Global Ltd | Registered Office 40 Connaught Street, Hyde Park, London W2 2AB Registered Company Number 05334580.



This paper is
100% recyclable