

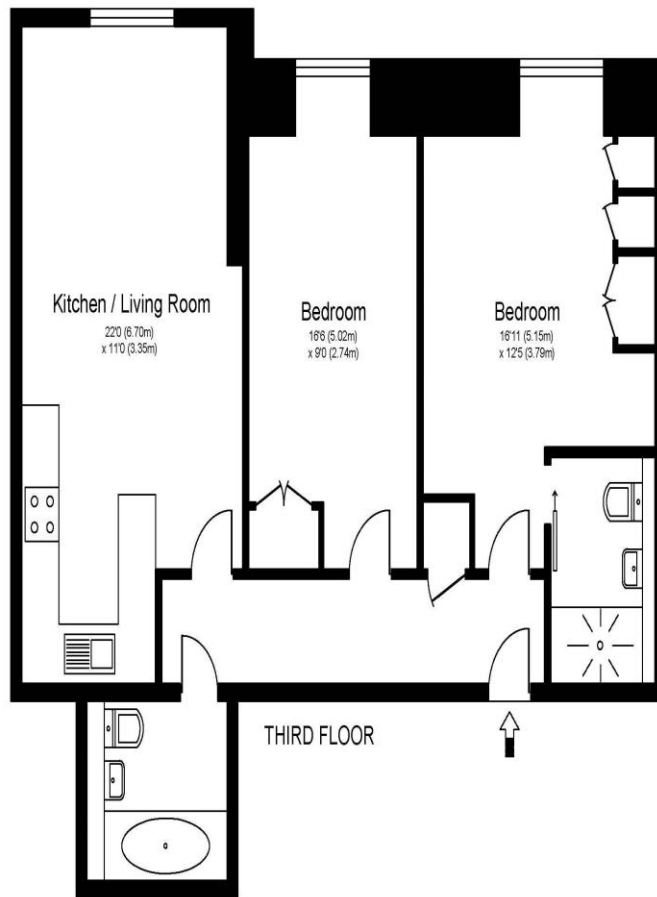


15 Bridge House, Bridge Street, Walton-On-Thames, Surrey, KT12 1AL

£1750 + initial deposit



BRIDGE HOUSE, BRIDGE STREET, SURREY, KT12



Approximate Gross Internal Floor Area: 65 m sq / 700 sq ft

Whilst every attempt has been made to ensure the accuracy of the floor plan contained here, measurements of doors, windows and rooms are approximate and no responsibility is taken for any error, omission or misstatements. These plans are not to scale and are for representation purposes only as defined by RICS Code of Measuring Practice and should be used as such by any prospective purchaser. Specifically no guarantee is given on total square footage of the property if quoted on this plan. Any figure given is for initial guidance only and should not be relied on as a basis of valuation.

A beautifully presented two-bedroom, two-bathroom apartment in a highly sought-after location, just moments from the River Thames towpath. Finished to an exceptional standard throughout, this stylish third-floor apartment offers contemporary living with a luxurious feel and an abundance of natural light. The spacious open-plan living and kitchen area features elegant shaker-style cabinetry, integrated appliances, and ample space for both relaxing and entertaining. Both bedrooms are generous doubles, with the principal bedroom benefiting from fitted wardrobes and a modern en-suite shower room. A well-appointed family bathroom serves the second bedroom and guests. Residents enjoy the convenience of gated allocated parking, a secure entry system, and lift access within this well-maintained development. Ideally positioned, the apartment is just a short stroll from both the vibrant town centre and the picturesque River Thames, providing an excellent balance of convenience and riverside living. Available unfurnished from 13th August. EPC Rating: B.



AGENTS NOTES: These details do not constitute any part of an offer or contract. In issuing them we do not have any authority to give any warranty or representation whatsoever in respect of this property. These details are provided without any responsibility on our part or the part of the vendors. No statements in these details are to be relied upon as representations of fact and purchasers should satisfy themselves by inspection or otherwise as to the accuracy of the statements contained therein.

Equipment: We have not tested the equipment or central heating system mentioned in these particulars and purchasers are advised to satisfy themselves as to their working order and condition.

Measurements: Great care is taken when measuring but measurements should not be relied upon for ordering carpets, equipment, etc.