

### Directions

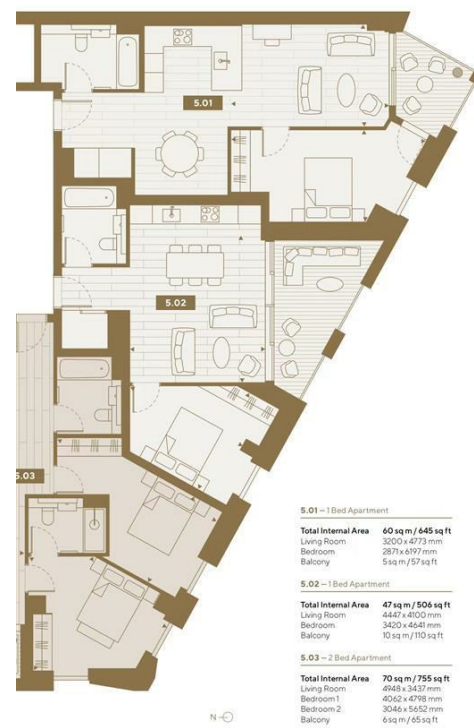
### Viewings

Viewings by arrangement only. Call 02033696888 to make an appointment.

### EPC Rating

B

Energy Efficiency Rating		Current	Potential
Very energy efficient - lower running costs			
(92 plus) A			
(81-91) B		85	
(69-80) C			
(55-68) D			
(39-54) E			
(21-38) F			
(1-20) G			
Not energy efficient - higher running costs			
England & Wales		EU Directive 2002/91/EC	



<b>5.01 - 1 Bed Apartment</b>	
Total Internal Area	60 sq m / 645 sq ft
Living Room	3020 x 4773 mm
Bedroom	2871 x 4197 mm
Balcony	5 sq m / 57 sq ft
<b>5.02 - 1 Bed Apartment</b>	
Total Internal Area	47 sq m / 504 sq ft
Living Room	4447 x 4900 mm
Bedroom	3420 x 4441 mm
Balcony	10 sq m / 110 sq ft
<b>5.03 - 2 Bed Apartment</b>	
Total Internal Area	70 sq m / 755 sq ft
Living Room	4948 x 3432 mm
Bedroom 1	4062 x 4798 mm
Bedroom 2	3044 x 4642 mm
Balcony	6 sq m / 65 sq ft



CN635 Flat 502, Vetro Court 6 Salter Street, London, E14 8FU

£600

# Vetro Court 6 Salter Street, London E14 8FU

1 1 1 B

Council Tax Band: C

