



## Clanricarde Gardens, W2

£2,350 Per calendar month

A stylish lower ground floor apartment in an attractive period building with a porter and gym. The property is finished to a high standard and offers an open-plan kitchen/reception room, a spacious bedroom with built-in storage and a well-equipped bathroom.

Clanricarde Gardens is a 'no through' road, in the heart of Notting Hill, opposite Kensington Palace and Hyde Park, there's superb transport links and plenty of local amenities to enjoy.

### Features

- Modern Finish
- One Double Bedroom
- Open Plan
- Wood Flooring
- Communal Gym
- Close To Amenities

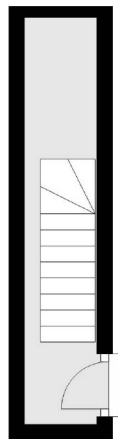


**Clanricarde Gardens, W2**

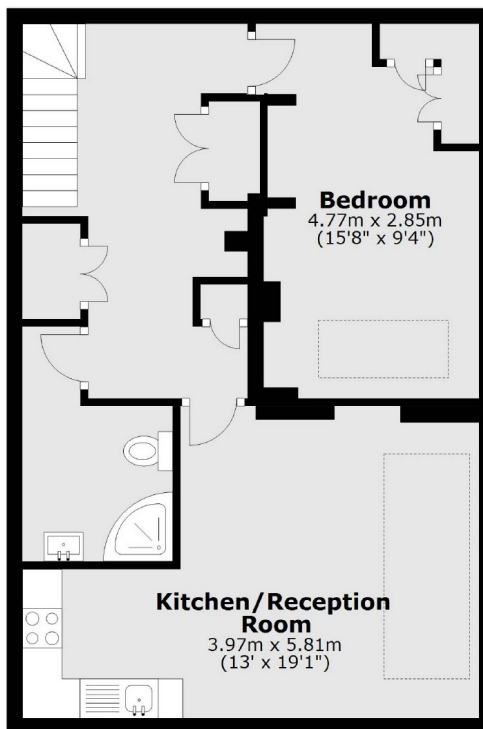


# Clanricarde Gardens, London, W2

**Ground Floor**



**Lower Ground Floor**



Total area: approx. 56.1 sq. metres (604.1 sq. feet)