



14 Jennings Close  
Northampton, NN5 4FJ



Derran Dooley

Partnered With

**Simpsons**  
Property Experts



**\*\* GUIDE PRICE £500,000 - £525,000 \*\***

Located in the highly sought-after area of St Crispin, this beautifully presented four-bedroom detached home offers exceptional space and versatility — ideal for modern family living.

Since purchasing the property, the current owner has thoughtfully enhanced and upgraded the home, creating a stylish, well-balanced living environment ready for its next family to move straight into and enjoy.

The ground floor provides impressive living accommodation, comprising a welcoming entrance hall, a generous sitting room, separate dining room, and a dedicated home office — perfect for hybrid working. The kitchen/breakfast room is fitted with integrated appliances and flows seamlessly into a practical utility room and cloakroom/WC, offering both convenience and functionality.

Upstairs, you'll find four genuine double bedrooms. The principal bedroom benefits from a dressing area with fitted wardrobes and a private ensuite, while bedroom two also enjoys its own ensuite shower room. A modern family bathroom completes the first floor.

Externally, the property continues to impress. The generous rear garden is mainly laid to lawn, providing excellent space for children, entertaining, or relaxing. The garage has been partially converted to create additional office space, while still retaining storage, and there is off-road parking for two to three vehicles.

Further benefits include gas radiator heating and uPVC double glazing throughout.

Situated close to local schools, parks, and St Crispin Retail Village, this is a fantastic opportunity to secure a substantial family home in one of Northampton's most desirable residential locations.

 4  3  3

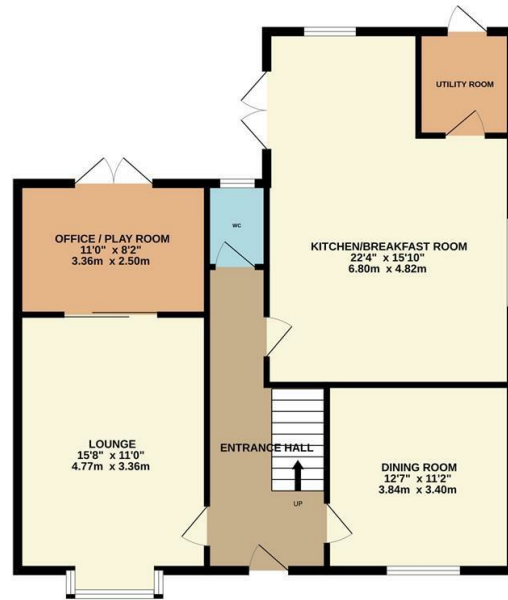
**Guide price £500,000**



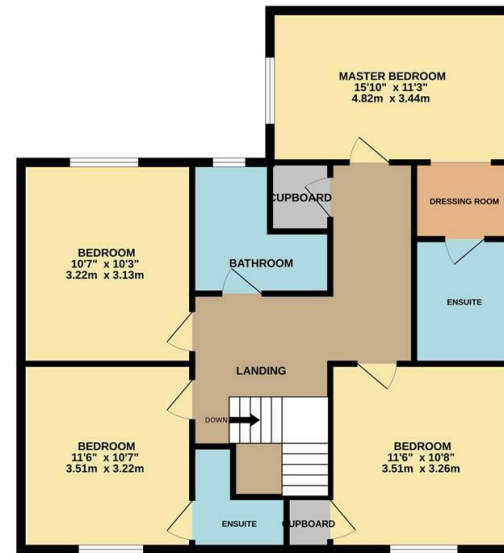
St Crispin is one of Northampton's most desirable residential areas, popular with families and professionals alike thanks to its attractive street scenes, green open spaces and strong community feel.



GROUND FLOOR  
933 sq.ft. (86.7 sq.m.) approx.

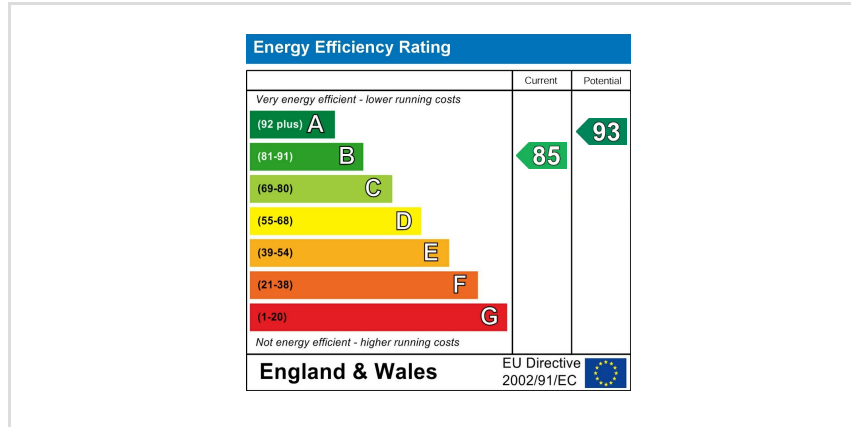


1ST FLOOR  
925 sq.ft. (85.9 sq.m.) approx.



TOTAL FLOOR AREA : 1858 sq.ft. (172.6 sq.m.) approx.

Whilst every attempt has been made to ensure the accuracy of the floor plan contained here, measurements of doors, windows, rooms and any other items are approximate and no responsibility is taken for any error, omission, or mis-statement. The plan is copyright to Simpson and Partners and is for illustrative purposes and should only be used as such by any prospective purchaser. The services, systems and appliances shown have not been tested and no guarantee as to their operability can be given.  
Made with Metropix ©2026



You may download, store and use the material for your own personal use and research. You may not republish, retransmit, redistribute or otherwise make the material available to any party or make the same available on any website, online service or bulletin board of your own or of any other party or make the same available in hard copy or in any other media without the website owner's express prior written consent. The website owner's copyright must remain on all reproductions of material taken from this website.



Derran Dooley  
Partnered With

**Simpsons**  
Property Experts



Tel: 01604 969706

Email: [northampton@simpsonspropertyexperts.co.uk](mailto:northampton@simpsonspropertyexperts.co.uk)

Web: [simpsonspropertyexperts.co.uk/our-locations/northampton](http://simpsonspropertyexperts.co.uk/our-locations/northampton)

