



Price
£375,000

Freehold

3x  2x  1x 

**Nursery Grove,
Gravesend, Kent, DA11**

OVER 60?

Secure this property
for up to **59% less!**

Wards
Helping you move forwards



Main features

- Chain Free
- Allocated parking for 3 cars
- Summerhouse with power and air-conditioning
- Beautifully decorated throughout
- Close to the A2/M2 motorway network
- Catchment area for Gravesend Grammar School

Accommodation

GROUND FLOOR

Entrance Hall
 Cloakroom
 Lounge/Diner : 15'9 x 11'7 (4.80m x 3.53m)
 Kitchen : 9'5 x 8'2 (2.87m x 2.49m)

FIRST FLOOR

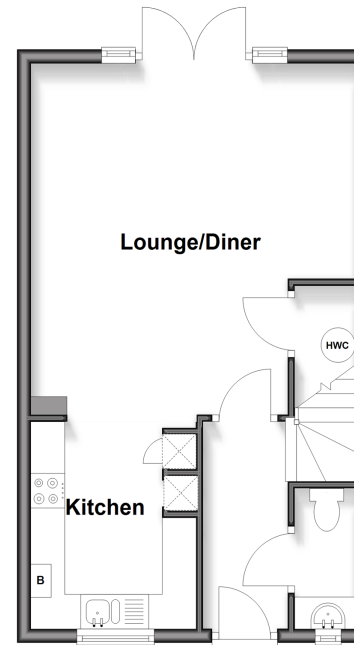
Landing
 Bedroom 1: 10'5 x 9'9 (3.18m x 2.97m)
 En-suite Shower Room
 Bedroom 2: 10'6 x 9'0 (3.20m x 2.75m)
 Bedroom 3: 10'8 x 6'8 (3.25m x 2.03m)
 Bathroom

OUTSIDE

Allocated Parking Space
 Rear Garden

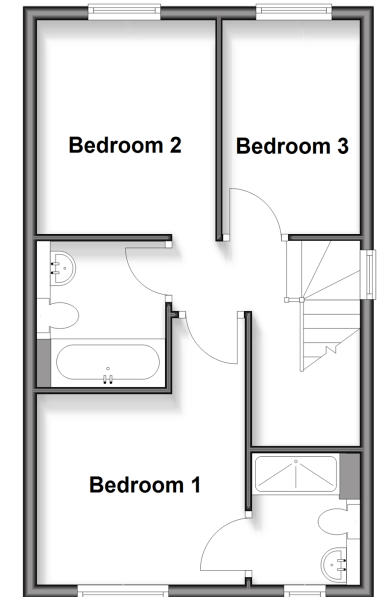
Ground Floor

Approx. 39.1 sq. metres (420.6 sq. feet)



First Floor

Approx. 39.1 sq. metres (420.6 sq. feet)



Unable to display material information. Please check with the branch for material information details for this property



11140860/20260424/LK/SB