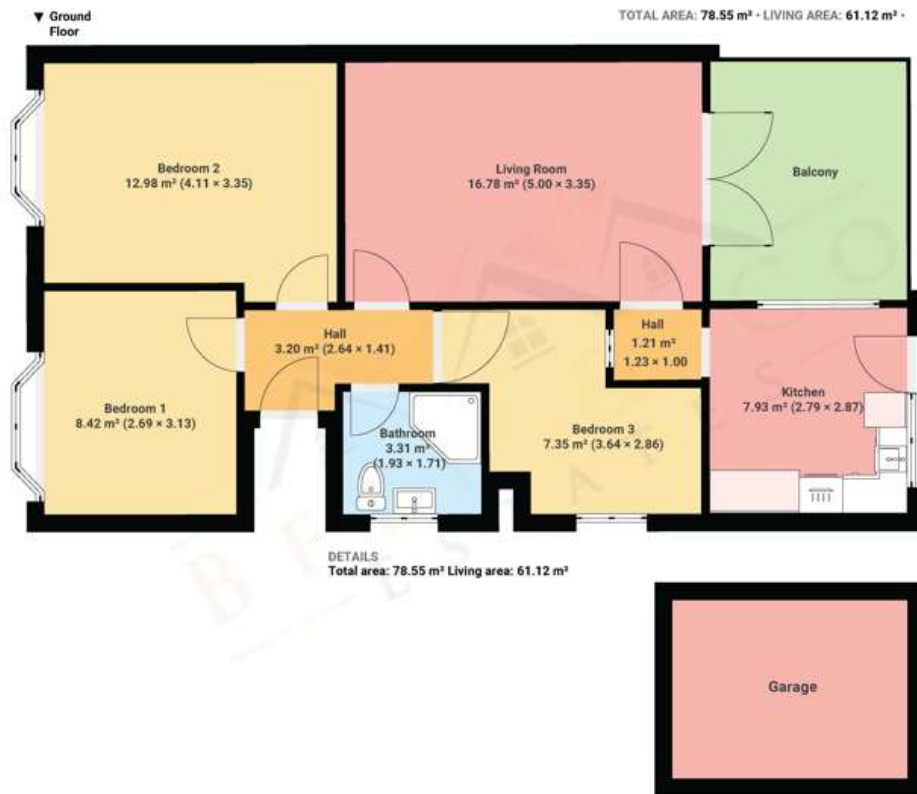




106 Church Lane | Aston | Sheffield | S26 2AX

Guide Price £290,000 to £300,000

Bell & Co Estates are pleased to present this spacious three double bedroom detached bungalow, ideally situated in the ever-popular village of Aston and offered to the market with no onward chain, making it a fantastic opportunity for buyers looking for a smooth and speedy move or an exciting family home. This well-proportioned home offers generous living accommodation throughout, beginning with a bright and airy living room, perfectly designed for both relaxing and entertaining. From here, doors open onto a private balcony—an ideal spot to enjoy your morning coffee or unwind at the end of the day. The separate modern kitchen is positioned to the rear of the property and provides ample worktop and storage space, offering a stylish, functional hub of the home. There are three well-sized double bedrooms, each offering comfortable and versatile living space, whether used for family, guests or home working. A modern family shower room and spacious hallway further enhance the sense of space and flow throughout the property. Externally, the property benefits from a detached garage, providing valuable storage or secure off-road parking. A large gated driveway, front garden and side gate access to the secret room under the property, ideal for home office, den or play room. Stunning patio area with further low maintenance garden. This private retreat is ideally located close to a wide range of local amenities, well-regarded schools and excellent transport links, this home is perfectly placed for convenient everyday living. Call now to arrange your viewing!



Contact Details

79 Wales Road
Kiveton Park
Sheffield
South Yorkshire
S26 6RA

www.bellcoestates.com
info@bellcoestates.com
03333 580590

106 Church Lane
Aston
SHEFFIELD
S26 2AX

Energy rating

D

Valid until

4 July 2035

Certificate number

0149-3052-6203-9715-4200

Property type

Detached bungalow

Total floor area

64 square metres

Agents Note: Whilst every care has been taken to prepare these sales particulars, they are for guidance purposes only. All measurements are approximate and for general guidance purposes only and whilst every care has been taken to ensure their accuracy, they should not be relied upon and potential buyers are advised to recheck the measurements