



Manchester House, Bridge Street, Bradwell

Hope Valley, S33 9HE

Ideally positioned in the centre of this popular village, the property benefits from convenient access to local shops, village amenities, and the stunning Peak District countryside.

The ground floor offers a ready-made business opportunity, fully equipped for hairdressing, with scope for other commercial uses, and includes an entrance hall, cloakroom/WC and a kitchenette. The space is enhanced by sash windows throughout, providing ample natural light while retaining its character. The property benefits from three-phase electrics.

The first floor features an apartment with high ceilings and pleasant views across the village. Although it requires completion, it presents excellent potential for further development or personalisation.



- For Sale by Modern Auction – T & C's apply
- The Modern Method of Auction
- Online bidding available
- Freehold, Vacant possession

- Subject to Reserve Price
- Fixed Timescales for Exchange and Completion
- Buy with Finance

- Buyers fees apply
- View, Bid & Buy
- BID ON ME



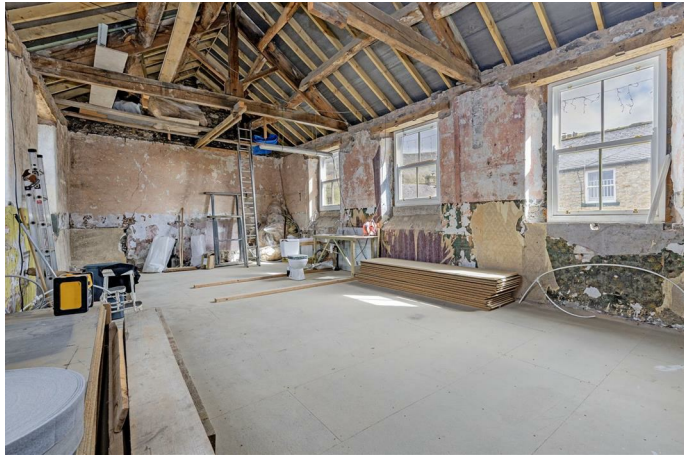
Externally, the property provides off-road parking for one vehicle.

This is an ideal opportunity for an investor or developer seeking a mixed-use property with scope to enhance the residential accommodation.

Offered to the market with vacant possession.

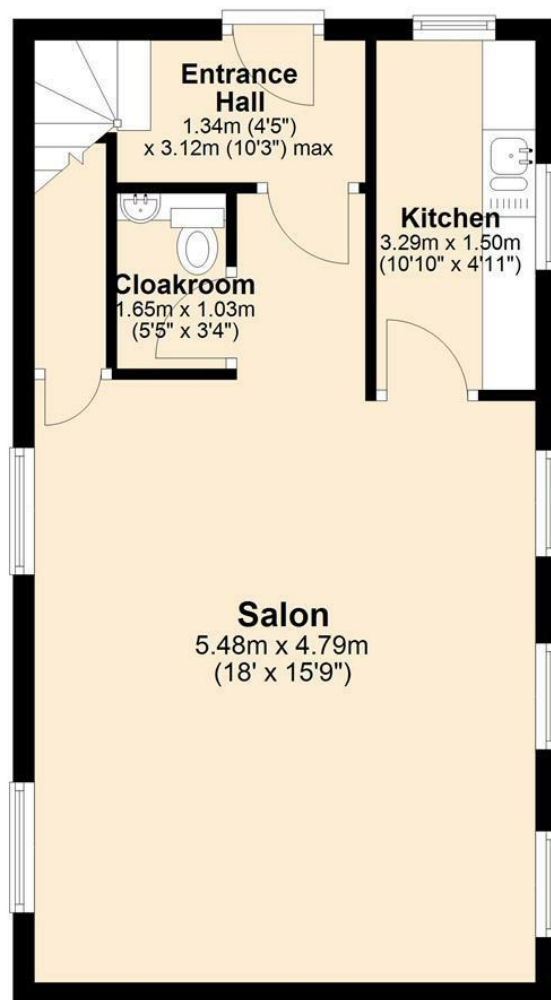






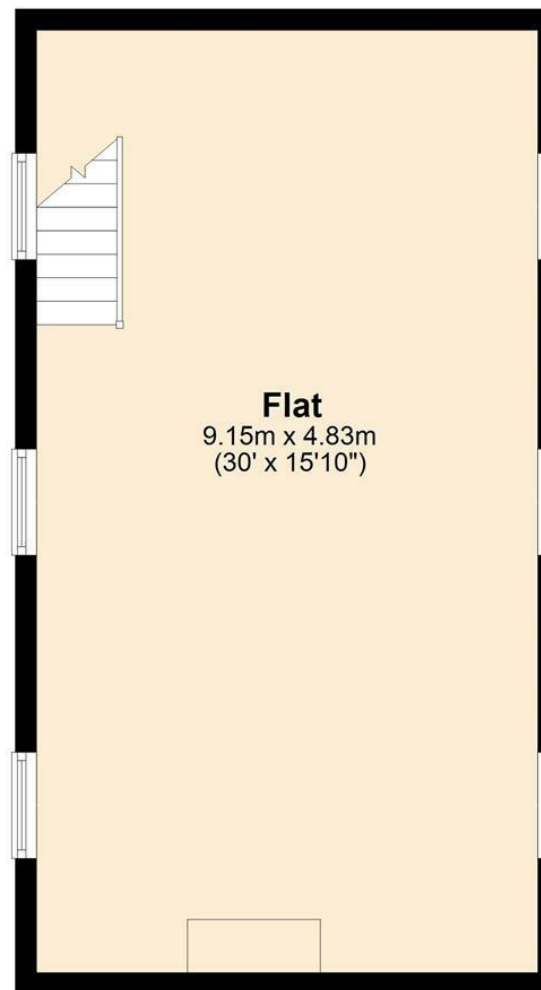
Ground Floor

Approx. 41.8 sq. metres (450.2 sq. feet)



First Floor

Approx. 41.8 sq. metres (450.2 sq. feet)



Total area: approx. 83.6 sq. metres (900.3 sq. feet)

Whilst every effort has been made to ensure the accuracy of the floorplan this plan is for reference only to location of rooms and property layout for detailed measurements please refer to the brochure or advice from the marketing Agent. UK Energy Assessors Ltd accept no responsibility for measurements and Gross areas of a property they have not visited. Plan produced using PlanUp.



Bakewell
 3 Royal Oak Place
 Matlock Street
 Bakewell DE45 1HD
 T: 01629 700699
 E: bakewell@elr.co.uk

Banner Cross
 888 Ecclesall Road
 Banner Cross
 Sheffield S11 8TP
 T: 01142 683388
 E: bannercross@elr.co.uk

Dore
 33 Townhead Road
 Sheffield
 S17 3GD
 T: 0114 2362420
 E: dore@elr.co.uk

Hathersage
 Main Road, Hathersage
 Hope Valley
 Derbyshire S32 1BB
 T: 01433 651888
 E: peakdistrict@elr.co.uk

Rotherham
 149 Bawtry Road
 Wickersley
 Rotherham S66 2BW
 T: 01709 917676
 E: wickersley@elr.co.uk

**EADON
 LOCKWOOD
 & RIDDLE**
 ESTD 1840