



151 Parkcroft, Bury Old Road , Salford, M7 4QX

Offers Over £220,000



Cousins Estate Agents are delighted to offer for sale this impressive three-bedroom, third-floor apartment, situated within a modern luxury development complete with lift access. Set within beautifully maintained communal gardens, the property benefits from a secure private parking garage accessed via electronically operated gates.

Built to a high specification, this spacious apartment offers stylish and contemporary living accommodation and is available with no onward chain, making it an ideal purchase for owner-occupiers and investors alike.

Park Croft is ideally positioned on the edge of Heaton Park, with excellent public transport links nearby. Regular bus services provide convenient access to Manchester city centre and Bury town centre via Bury Old Road, while Manchester Metrolink is just a short walk away. Commuters also benefit from easy access to the regional motorway network. The vibrant village of Prestwich Village offers an excellent selection of independent restaurants, cafés, bars and local amenities.



living room

kitchen

Bedroom 1

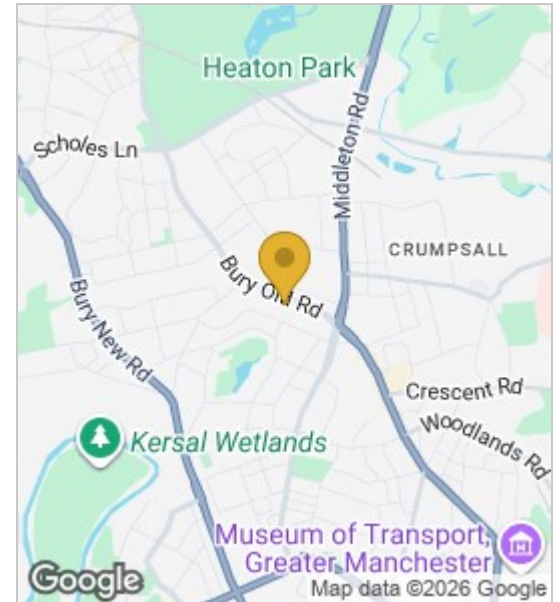
Bedroom 2

Bedroom 3

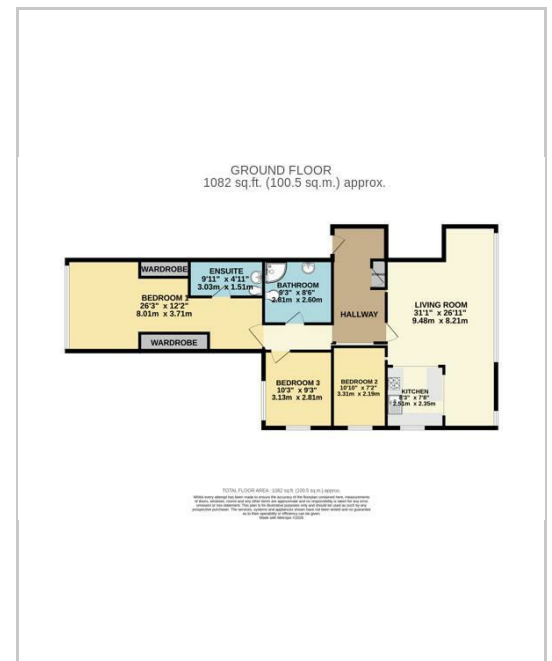
En suite

Family bathroom

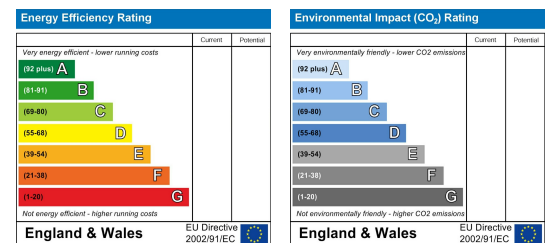
Area Map



Floor Plans



Energy Efficiency Graph



These particulars, whilst believed to be accurate are set out as a general outline only for guidance and do not constitute any part of an offer or contract. Intending purchasers should not rely on them as statements of representation of fact, but must satisfy themselves by inspection or otherwise as to their accuracy. No person in this firm's employment has the authority to make or give any representation or warranty in respect of the property.

