



NIKI ELLIS

exp<sup>®</sup> UK

@ niki.ellis@exp.uk.com

🌐 nikiellis.exp.uk.com

☎ 07590 403 415

# Hawk Close, Abbeydale, Gloucester, GL4 4WE

£499,500

5

2

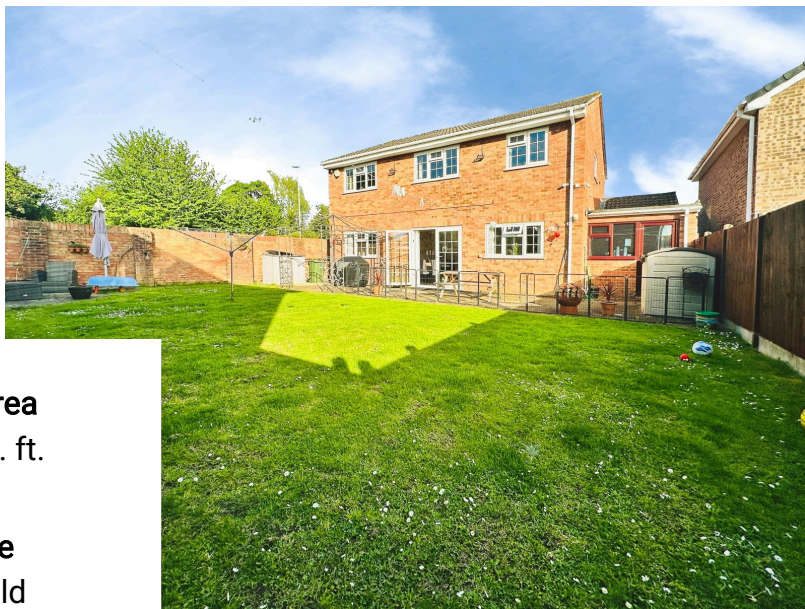


Brought to the market for the first time in 20 years, built by Heron Homes originally a 4 bed detached home now extended and boasting a 5th bedroom / study together with a 29ft kitchen / dining/ family room 23ft x 15 ft living room, utility, cloakroom, en-suite and family bathroom and also boasting ample parking, single garage and a private rear garden.

Abbeydale is a popular, family friendly suburb of Gloucester about three miles south east of the city centre. Large parts of the estate were built in the 1970's this was one of the later parts of the development built in about 1980 and originally the show home. there are many green spaces throughout the estate and Clock Tower Park is just across the road.

REF - NE0738



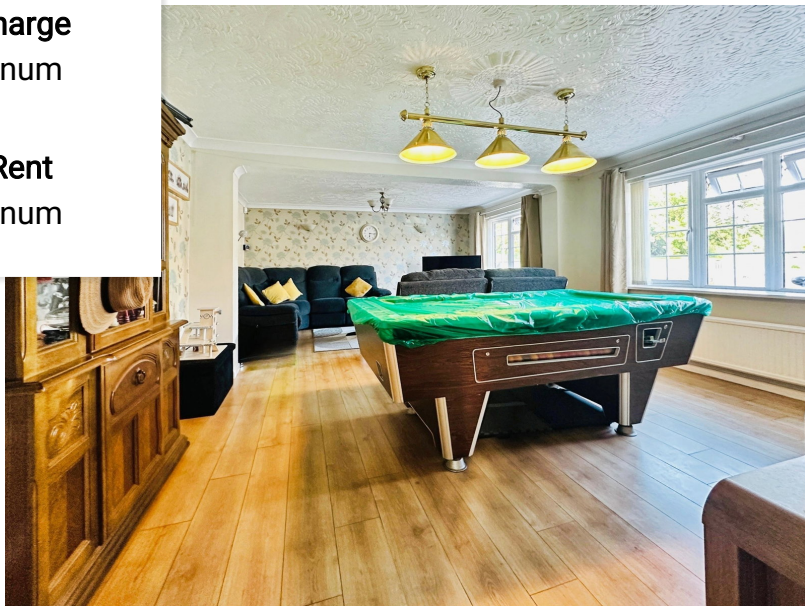


**Floor Area**  
1797 sq. ft.

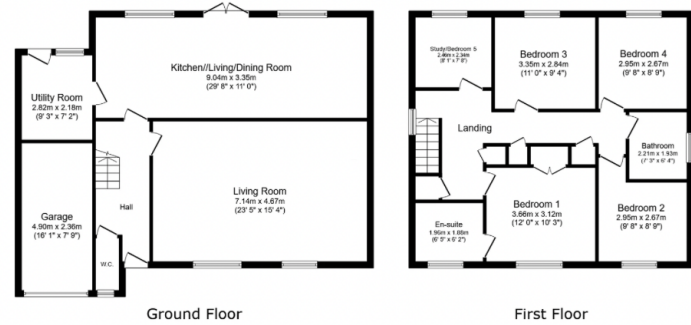
**Tenure**  
Freehold

**Service Charge**  
£0 per annum

**Ground Rent**  
£0 per annum



**NIKI ELLIS**  
exp



Total floor area: 167.0 sq.m. (1,797 sq.ft.)

This floor plan is for illustrative purposes only. It is not drawn to scale. Any measurements, floor areas (including any total floor area), openings and orientations are approximate. No details are guaranteed, they cannot be relied upon for any purpose and do not form any part of any agreement. No liability is taken for any error, omission or misstatement. A party must rely upon its own inspection(s). Powered by www.Propertybox.io

