

OVER 60?

Secure this property
for up to **59% less!**



Price

£800,000

Freehold

4x  3x  4x 

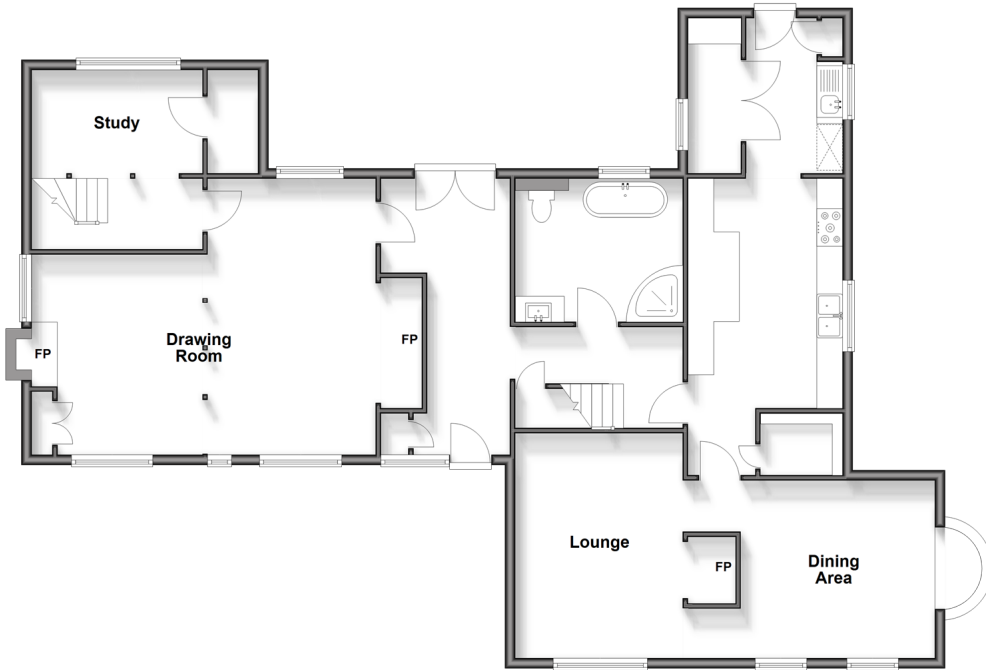
Benover Road, Yalding, Maidstone, Kent,

ME18

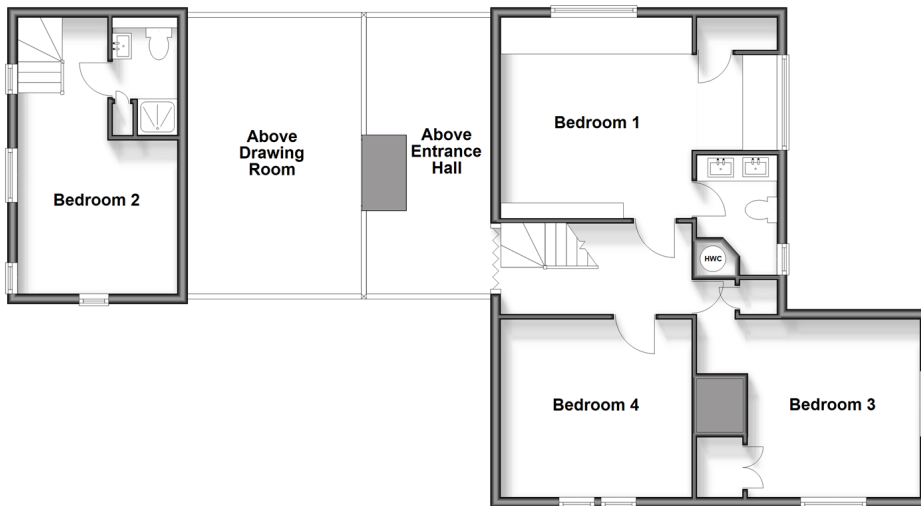
Wards

Helping you move forwards

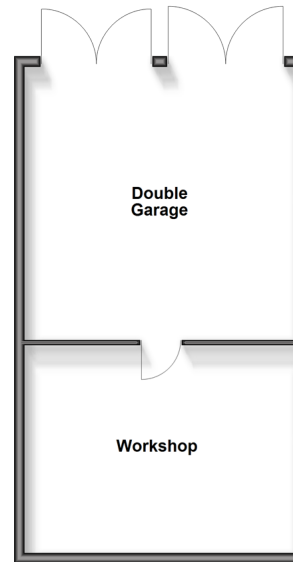
Split Level Ground Floor
Approx. 135.3 sq. metres (1456.2 sq. feet)



First Floor
Approx. 76.2 sq. metres (819.9 sq. feet)



Outbuilding
Approx. 49.6 sq. metres (534.2 sq. feet)



Accommodation

SPLIT LEVEL GROUND FLOOR

Entrance Hall

Vaulted Drawing Room: 17'4 x 10'6 (5.29m x 3.20m)

Drawing Room: 13'9 x 9'7 (4.19m x 2.92m)

Study: 10'0 x 6'10 (3.05m x 2.08m)

Bathroom

Kitchen: 15'1 x 9'8 (4.60m x 2.95m)

Utility: 9'7 x 6'0 (2.92m x 1.83m)

Dining Area: 11'11 x 11'9 (3.63m x 3.58m)

Lounge: 15'5 x 11'8 (4.70m x 3.56m)

FIRST FLOOR

Landing

Bedroom 1: 13'8 x 11'8 (4.17m x 3.56m)

En suite

Bedroom 3: 15'5 x 12'0 (4.70m x 3.66m)

Bedroom 4: 12'1 x 12'1 (3.69m x 3.69m)

Above Drawing Room: 17'4 x 10'6 (5.29m x 3.20m)

Above Entrance Hall: 15'9 x 10'2 (4.80m x 3.10m)

Bedroom 2: 10'0 x 9'5 (3.05m x 2.87m)

En suite

OUTBUILDING

Double Garage

Workshop

OUTSIDE

Gardens

Driveway



Main features

- Stunning Grade II listed cottage tastefully renovated to a high standard throughout
- Beautiful wrap around landscaped gardens, with additional garden and outdoor entertaining space and kitchen area
- Large outbuilding/garage and off road parking
- Diverse living space with multiple reception rooms to enjoy, all with log burners
- Boasting character throughout



Nearest Schools

Primary Schools: Yalding, St Peter & St Paul CofE 1.4 miles, Hunton CofE 1.8 miles, St Margaret's, Collier Street CofE 1.8 miles
Secondary: Five Acre Wood 4.9 miles, New Line Learning 4.9 miles, Mascalls 5.1 miles, Bethany 5.5 miles



Transport Information

Train Stations: Yalding 1.9 miles, Beltring 2.3 miles, Watlington 3.7 miles



Address

Benover Road, Yalding, Maidstone, Kent, ME18



Directions

For directions to this property please contact us.



Wards
Helping you move forwards

Call Paddock Wood Branch 01892 836877 ■ wardsofkent.co.uk



- Legal advice should be taken to verify fixtures/fittings, planning, alterations and/or lease details
- Appliances & services are untested, dimensions are approximate and floor plans are not to scale
- Through a Homewise Home For Life Plan people aged 60+ can secure this property for up to 59% less, by purchasing a Lifetime Lease

EPC RATING

CURRENT: E(43) POTENTIAL: D(63)

The EPC rating graphic shows a lightbulb icon on the left, followed by a bar chart. The current rating is E(43) and the potential rating is D(63).

13627363/20260221/WA/GD