

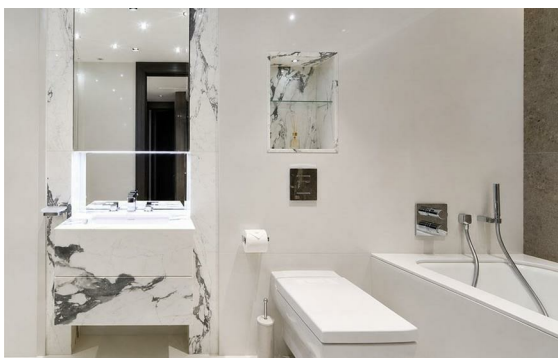
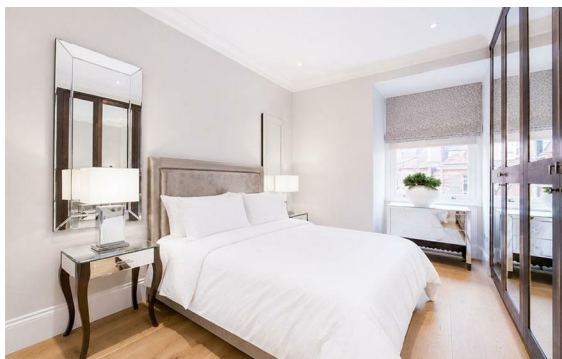


Jerome Crescent, St John's Wood, London, NW8

Rent £815 Per Month

2 Bed | 2 Bath | 1 Reception

Please call us on 020 7724 2233 or email us info@newingtonstates.com to book a viewing.



A well-presented two-bedroom apartment offering bright interior and practical living space in a convenient location close to Marylebone and St John's Wood. The property features a spacious reception room, a fitted kitchen with integrated appliances, and two well-proportioned double bedrooms complemented by two bathrooms. Wooden flooring runs throughout, enhancing the clean and contemporary finish of the apartment.

Residents benefit from porter service, underground parking, and access to a communal gym. Ideally located close to Marylebone Station and St. John's Wood Station, with easy access to Maida Vale and surrounding amenities.

EPC Rating: C

Energy Efficiency Rating: C

Agents Note: Whilst every care has been taken to prepare these particulars, they are for guidance purposes only. All measurements are approximate and are for general guidance purposes only and whilst every care has been taken to ensure their accuracy, they should not be relied upon and potential buyers/tenants are advised to recheck the measurements.

NEWINGTON
— ESTATES —

60 Upper Montagu Street

London

W1H 1SN

020 7724 2233

info@newingtonstates.com

<http://www.newingtonstates.com>