



**POOLE  
TOWNSEND**

# Hadleigh Drive, Barrow-in-furness, LA13 0GR

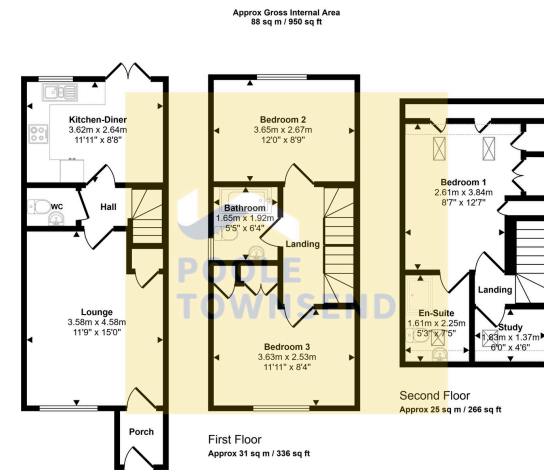
£225,000

3 2 1



- 3 Bed Semi-Detached House
- Situated In a Quiet Cul-de-sac
- Close To Local Amenities
- Driveway Parking For 2-3 Cars
- A Rear Garden
- A Stylish Lounge
- A well-Equipped Kitchen/ Diner
- A Family Bathroom
- A Spacious Master Bedroom
- Upstairs Featuring A study With En-Suite

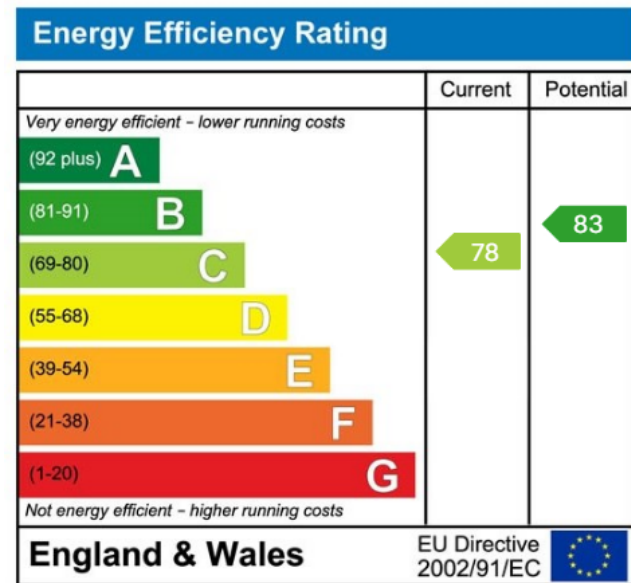




Denotes head height below 1.5m

This floorplan is only for illustrative purposes and is not to scale. Measurements of rooms, doors, windows, and any items are approximate and no responsibility is taken for any error, omission or mis-statement. Icons of items such as bathroom suites are representations only and may not look like the real items. Made with Made Simple 360.

**NEW!** Located within the popular Ratings Village development in Roose, Barrow, this modern home enjoys a quiet cul-de-sac setting close to Tesco Metro, schools, transport links and scenic walks along Mill Beck to Furness Abbey. The property offers driveway parking for 2-3 cars and a landscaped rear garden with patio, raised planters, pergola and shed. Inside, a porch leads into a stylish lounge with electric fire and storage, opening to an inner hall with cloakroom and a well-equipped kitchen-diner with integrated appliances and patio doors. The first floor provides two bedrooms and a family bathroom, while the second floor features a study and a spacious master bedroom with extensive storage and a contemporary en-suite shower room.



Visit us at  
[www.pooletownsend.co.uk](http://www.pooletownsend.co.uk)  
[enquiries@pooletownsend.co.uk](mailto:enquiries@pooletownsend.co.uk)

We are open  
 Monday – Friday 9.00 – 5.00  
 Saturday 9.00 – 1.00

Barrow 01229 811811  
 Ulverston 01229 588111  
 Grange 015395 33316  
 Kendal 01539 734455  
 Milnthorpe 015395 62044