



Pitshanger Lane, W5

£480,000

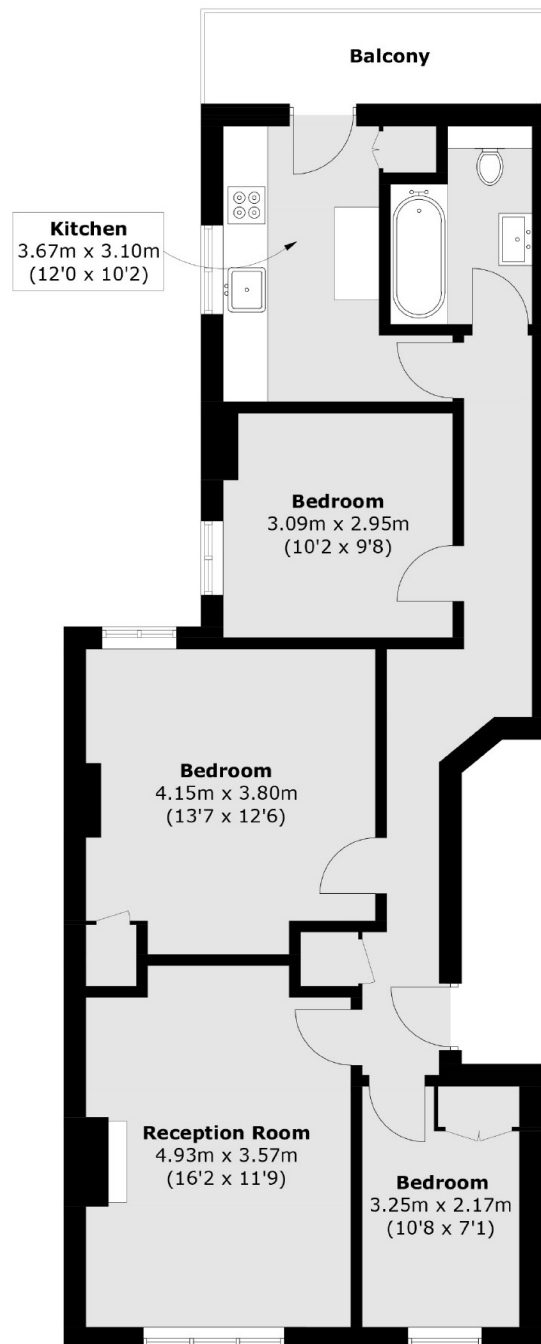
A three bedroom first floor purpose built Edwardian mansion flat with a private south facing balcony. With approximately 850sq.ft of living space, there is a spacious living room with lots of natural light. The property has been modernised throughout by the current owners. No onward chain.

Located on Pitshanger Lane, the award winning high street. The property is also very close to the Green Space of Pitshanger Park, Ealing Golf Club. There are numerous excellent local schools including North Ealing Primary and Notting Hill Girls.

Features

- Three Bedrooms
- Large Living Room
- First Floor
- Private Balcony
- Pitshanger Location
- No Onward Chain

Pitshanger Lane, London, W5



Total area (approx.): 78.0 sq. m (839.5 sq. ft)
Balcony: 4.5 sq. m (48.4 sq. ft)