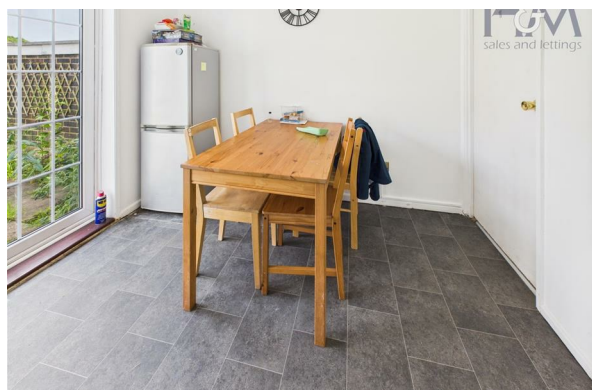
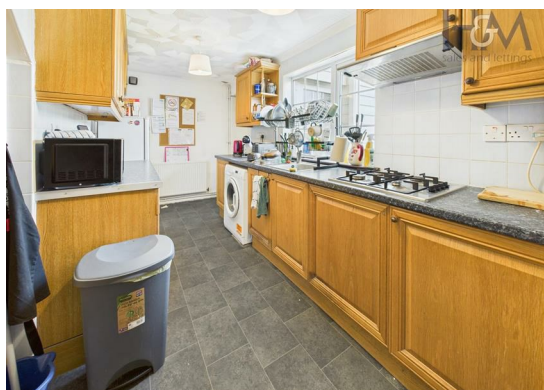
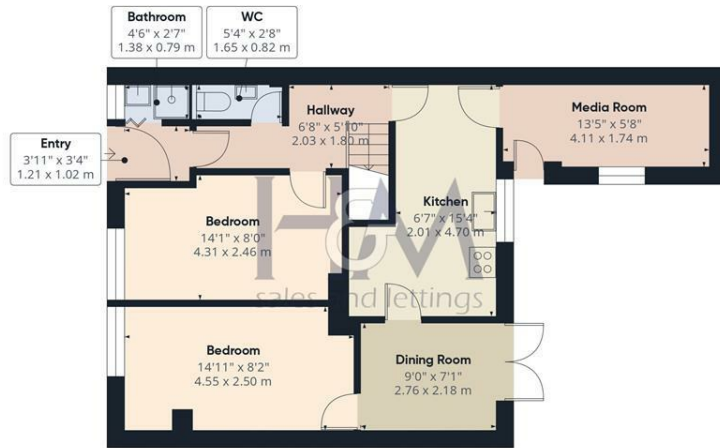


Verity Way, Stevenage, Hertfordshire, SG1 5PR

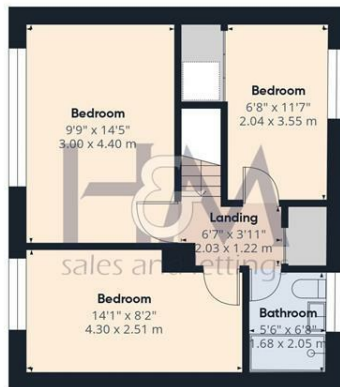
£3,250 PCM



****DON'T MISS OUT ONLINE VIEWINGS AVAILABLE*** Suitable for *****GSK/MBDA/ AIR BUS** interns. Five-Bedroom HMO located in the Pin Green area of Stevenage. Accommodation comprises of entrance hall, downstairs shower room, four-piece bathroom suite, five fully furnished bedrooms, fitted kitchen, communal living room, and dining area. The property is further complimented with an enclosed rear garden and on-road parking. The let is Available from the 4th September! Call us to arrange a viewing.



Floor 0



Floor 1

Approximate total area^m
1018 ft²
94.4 m²

(1) Excluding balconies and terraces

Calculations reference the RICS IPMS 3C standard. Measurements are approximate and not to scale. This floor plan is intended for illustration only.

GIRAFFE360

86 High Street
Stevenage
Hertfordshire
SG1 3DW
01438 728444

stevenage@homesandmortgages.co.uk

Energy Efficiency Rating

	Current	Potential
Very energy efficient - lower running costs		
(92 plus) A		
(81-91) B		81
(69-80) C		
(55-68) D	64	
(39-54) E		
(21-38) F		
(1-20) G		
Not energy efficient - higher running costs		

England & Wales

EU Directive 2002/91/EC

