

# KEW BRIDGE RISE

Site Plan & Floor Plan Brochure  
Goldcrest House



L&Q

# Site Plan



## Property Key

- Shared Ownership and Market Sale Apartments

---

- Shared Ownership Apartments

---

- Affordable Rent Houses and Apartments

---

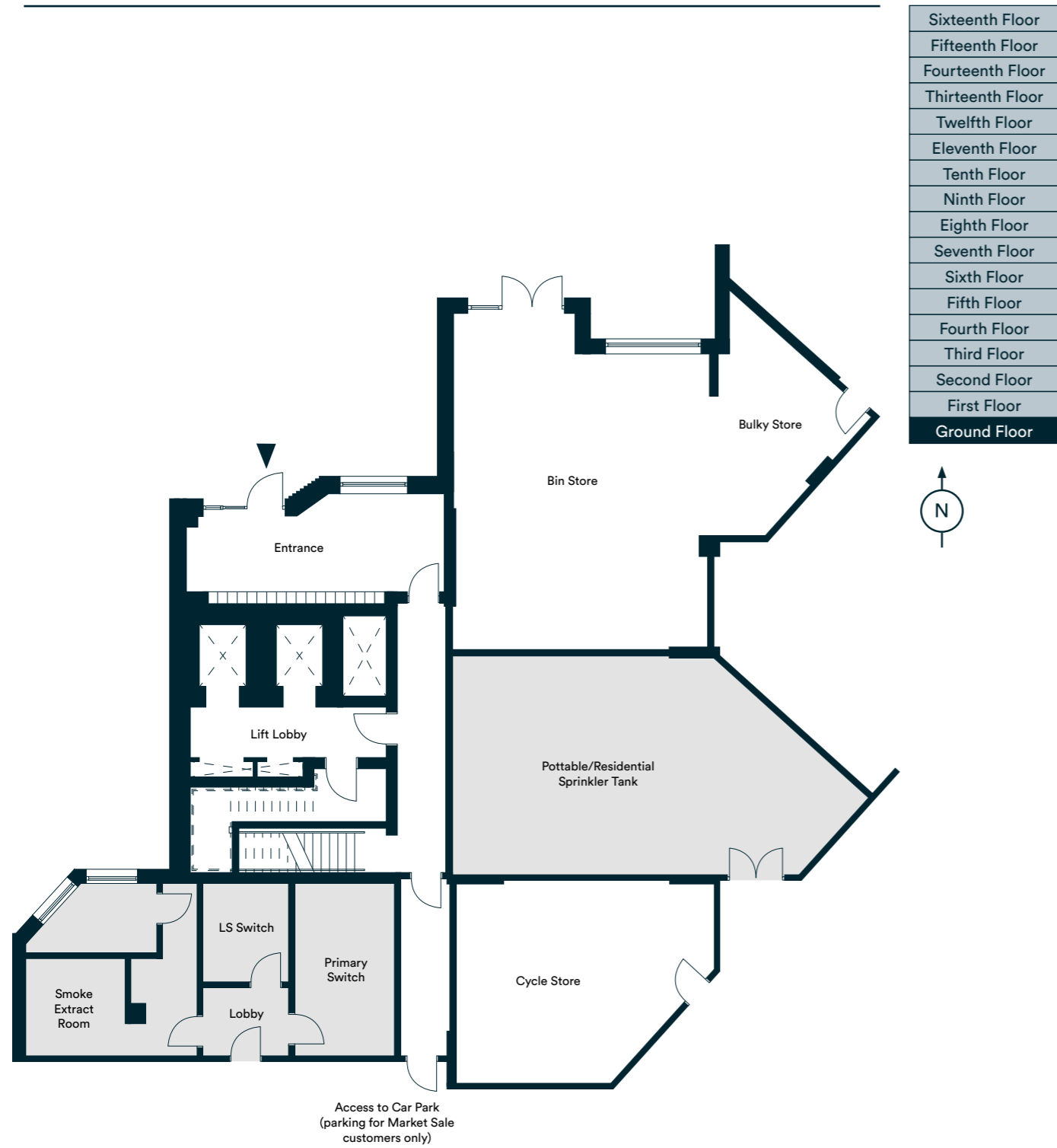
- Market Sale Apartments

---

- On-site Amenities

Please note that the properties are currently under construction. For further clarification regarding specific individual plots, please ask our Sales Associates. Any depiction of the layout does not show details of gradients of land, boundary treatments, local authority street lighting or landscaping. It is our current intention to build in accordance with this layout including the locations of Market Sale, Shared Ownership, Private Rent and other tenures shown. However, there may be occasions when house designs, boundaries, landscaping and positions of roads and footpaths, play areas and other facilities or amenities, or the type of tenure or tenure location, may change as the development proceeds and as properties are marketed. The layout shown and type of tenures included is subject to amendments resulting from changes to the planning permission and planning obligations for the development. Depictions of the layout should be used as guidance only. No site map (whether computer generated or otherwise) forms part of any offer, contract, warranty, or representation and are for illustrative and guidance purposes only, quality of this technology may vary. In relation to computer generated images, minimum dimensions have been used to generate this image and as a result dimensions may vary (and should not be relied on by you).

# Ground Floor



Sixteenth Floor
Fifteenth Floor
Fourteenth Floor
Thirteenth Floor
Twelfth Floor
Eleventh Floor
Tenth Floor
Ninth Floor
Eighth Floor
Seventh Floor
Sixth Floor
Fifth Floor
Fourth Floor
Third Floor
Second Floor
First Floor
Ground Floor

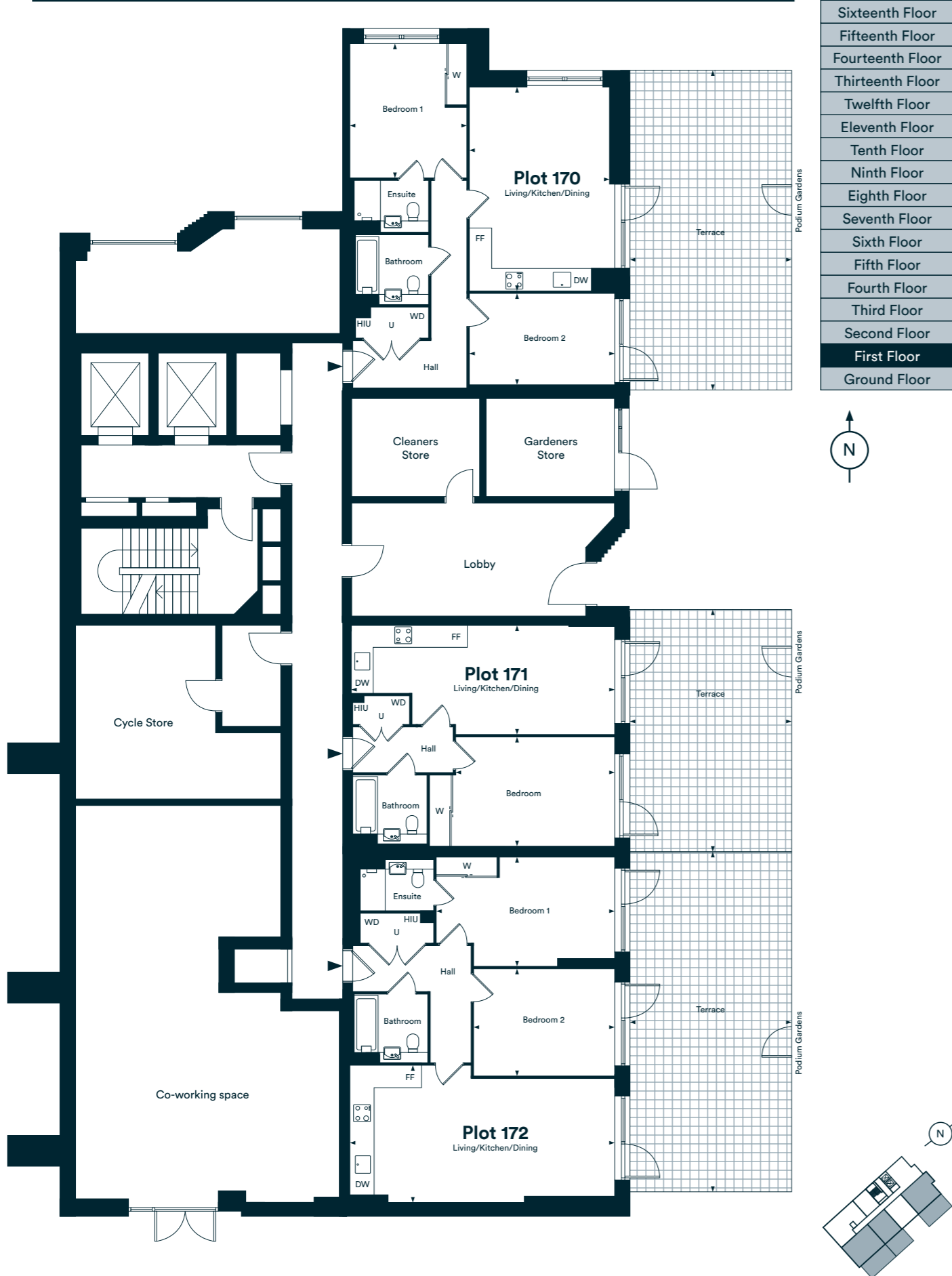


Photography of Kew Bridge Rise showhome, indicative only.

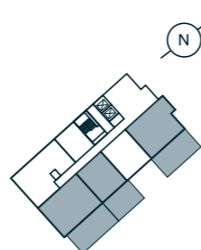
The floor plans provided are intended to only give a general indication of the proposed floor layout, are not drawn to scale and are not intended to form part of any offer, contract, warranty or representation. Measurements are given to the widest point, are approximate and are given as a guide only. They must not be relied upon as a statement or representation of fact. Do not use these measurements for carpet sizes, appliance spaces or items of furniture. Kitchen, bathroom and utility layouts may differ to build, and specific plot sizes and layouts may vary within the same unit type. Built-in wardrobe to include mirrored sliding doors, shelf and chrome hanging rail. For further clarification regarding specific individual plots, please ask our Sales Associates.

# First Floor

Plots 170, 171 & 172



Sixteenth Floor
Fifteenth Floor
Fourteenth Floor
Thirteenth Floor
Twelfth Floor
Eleventh Floor
Tenth Floor
Ninth Floor
Eighth Floor
Seventh Floor
Sixth Floor
Fifth Floor
Fourth Floor
Third Floor
Second Floor
<b>First Floor</b>
Ground Floor



## Plot 170 - 2 Bedroom Apartment

Living/Kitchen/Dining	6.00m x 4.15m	19'9" x 13'7"
Bedroom 1	3.95m x 3.45m	13'0" x 11'4"
Bedroom 2	2.70m x 4.30m	8'10" x 14'0"
<b>Total Internal Area</b>	<b>74m<sup>2</sup></b>	<b>792ft<sup>2</sup></b>
Terrace	45.36m <sup>2</sup>	485.6ft <sup>2</sup>

## Plot 171 - 1 Bedroom Apartment

Living/Kitchen/Dining	7.75m x 3.20m	25'6" x 10'7"
Bedroom	4.70m x 3.25m	15'4" x 10'7"
<b>Total Internal Area</b>	<b>51m<sup>2</sup></b>	<b>544ft<sup>2</sup></b>
Terrace	34.32m <sup>2</sup>	370.1ft <sup>2</sup>

## Plot 172 - 2 Bedroom Apartment

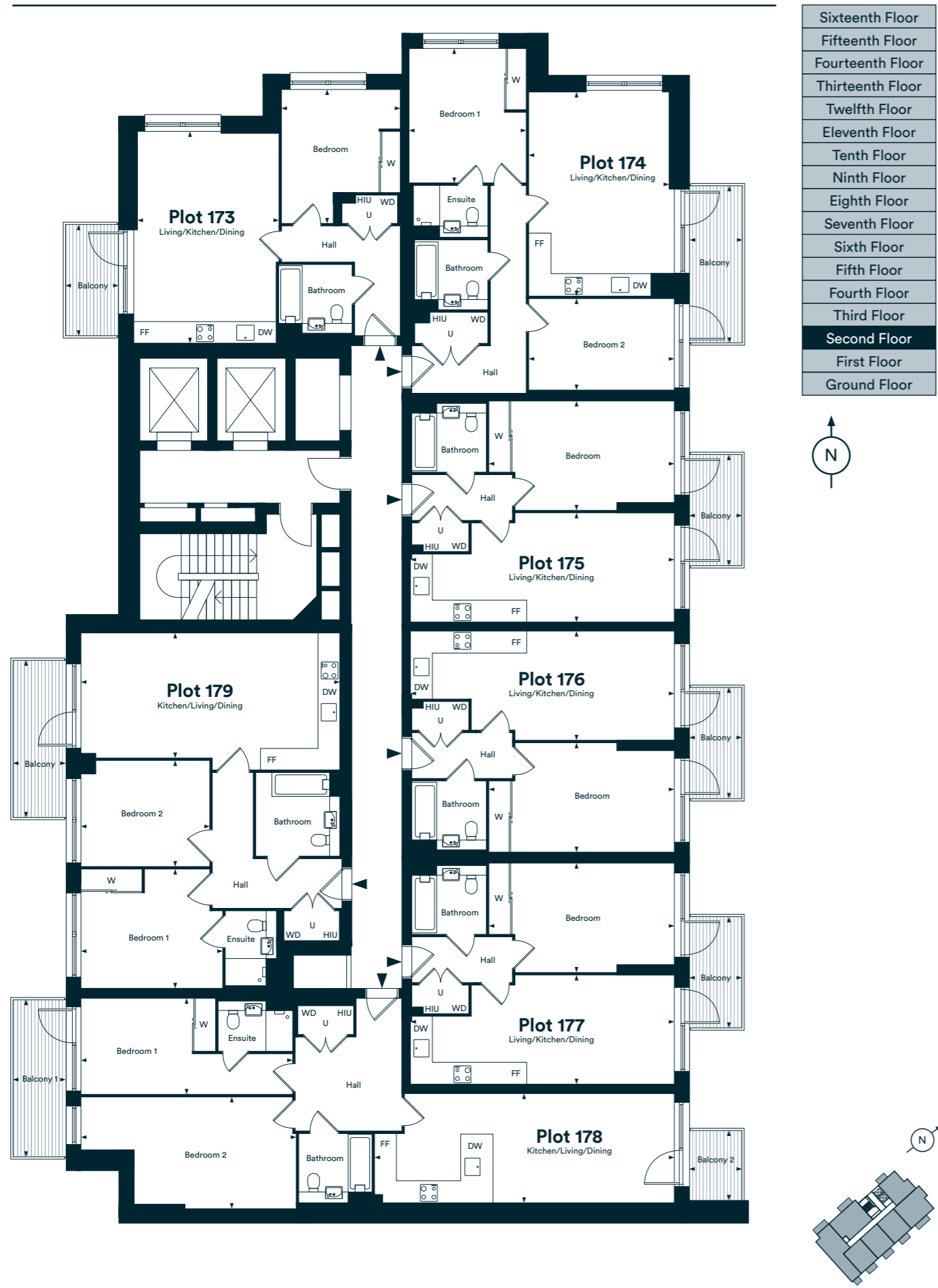
Living/Kitchen/Dining	4.05m x 7.85m	13'3" x 25'8"
Bedroom 1	3.20m x 5.30m	10'7" x 17'4"
Bedroom 2	3.15m x 4.15m	10'4" x 13'8"
<b>Total Internal Area</b>	<b>80m<sup>2</sup></b>	<b>856ft<sup>2</sup></b>
Terrace	48.8m <sup>2</sup>	516.7ft <sup>2</sup>

FF - Fridge/Freezer | DW - Dishwasher | W - Wardrobe | C - Cupboard  
 U - Utility Room | WD - Washer/Dryer | HIU - Heat Interface Unit

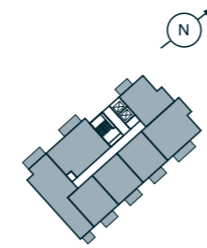
The floor plans provided are intended to only give a general indication of the proposed floor layout, are not drawn to scale and are not intended to form part of any offer, contract, warranty or representation. Measurements are given to the widest point, are approximate and are given as a guide only. They must not be relied upon as a statement or representation of fact. Do not use these measurements for carpet sizes, appliance spaces or items of furniture. Kitchen, bathroom and utility layouts may differ to build, and specific plot sizes and layouts may vary within the same unit type. Built-in wardrobe to include mirrored sliding doors, shelf and chrome hanging rail. For further clarification regarding specific individual plots, please ask our Sales Associates.

# Second Floor

Plots 173, 174, 175, 176, 177, 178 & 179



Sixteenth Floor
Fifteenth Floor
Fourteenth Floor
Thirteenth Floor
Twelfth Floor
Eleventh Floor
Tenth Floor
Ninth Floor
Eighth Floor
Seventh Floor
Sixth Floor
Fifth Floor
Fourth Floor
Third Floor
<b>Second Floor</b>
First Floor
Ground Floor



## Plot 173 - 1 Bedroom Apartment

Living/Kitchen/Dining	4.20m x 6.25m	13'9" x 20'6"
Bedroom	3.50m x 3.95m	11'6" x 12'11"
<b>Total Internal Area</b>	<b>53m<sup>2</sup></b>	<b>574ft<sup>2</sup></b>
Balcony	5m <sup>2</sup>	53.8ft <sup>2</sup>

## Plot 174 - 2 Bedroom Apartment

Living/Kitchen/Dining	4.15m x 6.00m	13'7" x 19'9"
Bedroom 1	3.45m x 3.95m	11'4" x 12'11"
Bedroom 2	4.30m x 2.70m	14'0" x 8'10"
<b>Total Internal Area</b>	<b>74m<sup>2</sup></b>	<b>792ft<sup>2</sup></b>
Balcony	7m <sup>2</sup>	75.3ft <sup>2</sup>

## Plots 175, 176 & 177 - 1 Bedroom Apartment

Living/Kitchen/Dining	7.70m x 3.20m	25'3" x 10'7"
Bedroom	3.25m x 5.45m	10'7" x 17'11"
<b>Total Internal Area</b>	<b>51m<sup>2</sup></b>	<b>544ft<sup>2</sup></b>
Balcony	5m <sup>2</sup>	53.8ft <sup>2</sup>

## Plot 178 - 2 Bedroom Apartment

Living/Kitchen/Dining	8.85m x 3.25m	29'1" x 10'7"
Bedroom 1	6.25m x 2.85m	20'6" x 9'4"
Bedroom 2	6.35m x 3.30m	20'11" x 10'9"
<b>Total Internal Area</b>	<b>84m<sup>2</sup></b>	<b>900ft<sup>2</sup></b>
Balcony 1	3.1m <sup>2</sup>	34.7ft <sup>2</sup>
Balcony 2	7.2m <sup>2</sup>	77.5ft <sup>2</sup>

## Plot 179 - 2 Bedroom Apartment

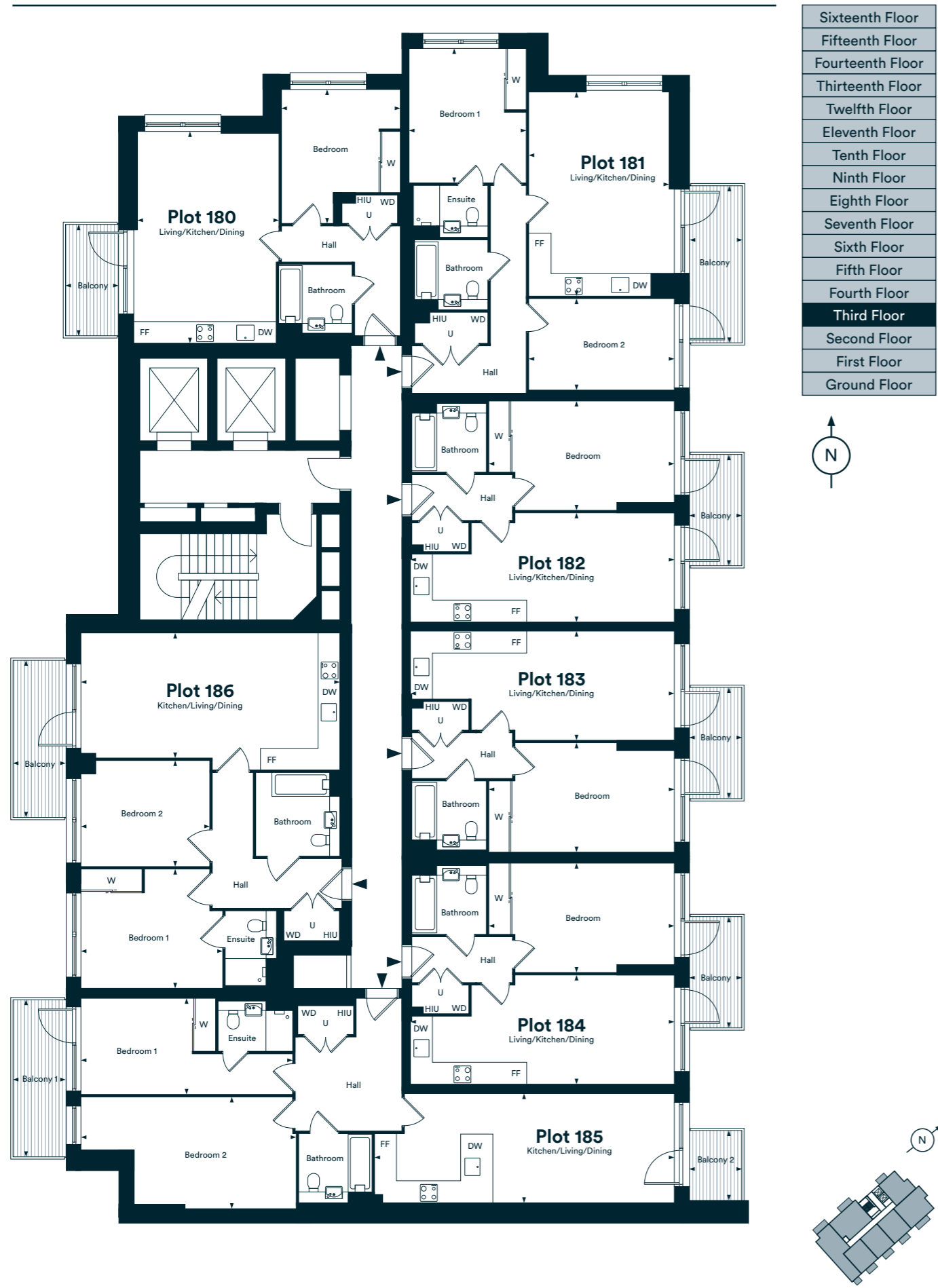
Living/Kitchen/Dining	3.70m x 7.65m	12'1" x 25'1"
Bedroom 1	3.50m x 4.20m	11'6" x 13'9"
Bedroom 2	3.10m x 3.80m	10'2" x 12'5"
<b>Total Internal Area</b>	<b>79m<sup>2</sup></b>	<b>845ft<sup>2</sup></b>
Balcony	7m <sup>2</sup>	75.3ft <sup>2</sup>

FF - Fridge/Freezer | DW - Dishwasher | W - Wardrobe | C - Cupboard  
 U - Utility Room | WD - Washer/Dryer | HIU - Heat Interface Unit

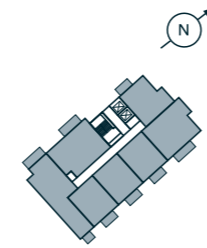
The floor plans provided are intended to only give a general indication of the proposed floor layout, are not drawn to scale and are not intended to form part of any offer, contract, warranty or representation. Measurements are given to the widest point, are approximate and are given as a guide only. They must not be relied upon as a statement or representation of fact. Do not use these measurements for carpet sizes, appliance spaces or items of furniture. Kitchen, bathroom and utility layouts may differ to build, and specific plot sizes and layouts may vary within the same unit type. Built-in wardrobe to include mirrored sliding doors, shelf and chrome hanging rail. For further clarification regarding specific individual plots, please ask our Sales Associates.

# Third Floor

Plots 180, 181, 182, 183, 184, 185 & 186



Sixteenth Floor
Fifteenth Floor
Fourteenth Floor
Thirteenth Floor
Twelfth Floor
Eleventh Floor
Tenth Floor
Ninth Floor
Eighth Floor
Seventh Floor
Sixth Floor
Fifth Floor
Fourth Floor
<b>Third Floor</b>
Second Floor
First Floor
Ground Floor



## Plot 180 - 1 Bedroom Apartment

Living/Kitchen/Dining	4.20m x 6.25m	13'9" x 20'6"
Bedroom	3.50m x 3.95m	11'6" x 12'11"
<b>Total Internal Area</b>	<b>53m<sup>2</sup></b>	<b>574ft<sup>2</sup></b>
Balcony	5m <sup>2</sup>	53.8ft <sup>2</sup>

## Plot 181 - 2 Bedroom Apartment

Living/Kitchen/Dining	4.15m x 6.00m	13'7" x 19'9"
Bedroom 1	3.45m x 3.95m	11'4" x 12'11"
Bedroom 2	4.30m x 2.70m	14'0" x 8'10"
<b>Total Internal Area</b>	<b>74m<sup>2</sup></b>	<b>792ft<sup>2</sup></b>
Balcony	7m <sup>2</sup>	75.3ft <sup>2</sup>

## Plots 182, 183 & 184 - 1 Bedroom Apartment

Living/Kitchen/Dining	7.70m x 3.20m	25'3" x 10'7"
Bedroom	3.25m x 5.45m	10'7" x 17'11"
<b>Total Internal Area</b>	<b>51m<sup>2</sup></b>	<b>544ft<sup>2</sup></b>
Balcony	5m <sup>2</sup>	53.8ft <sup>2</sup>

## Plot 185 - 2 Bedroom Apartment

Living/Kitchen/Dining	8.85m x 3.25m	29'1" x 10'7"
Bedroom 1	6.25m x 2.85m	20'6" x 9'4"
Bedroom 2	6.35m x 3.30m	20'11" x 10'9"
<b>Total Internal Area</b>	<b>84m<sup>2</sup></b>	<b>900ft<sup>2</sup></b>
Balcony 1	3.1m <sup>2</sup>	34.7ft <sup>2</sup>
Balcony 2	7.2m <sup>2</sup>	77.5ft <sup>2</sup>

## Plot 186 - 2 Bedroom Apartment

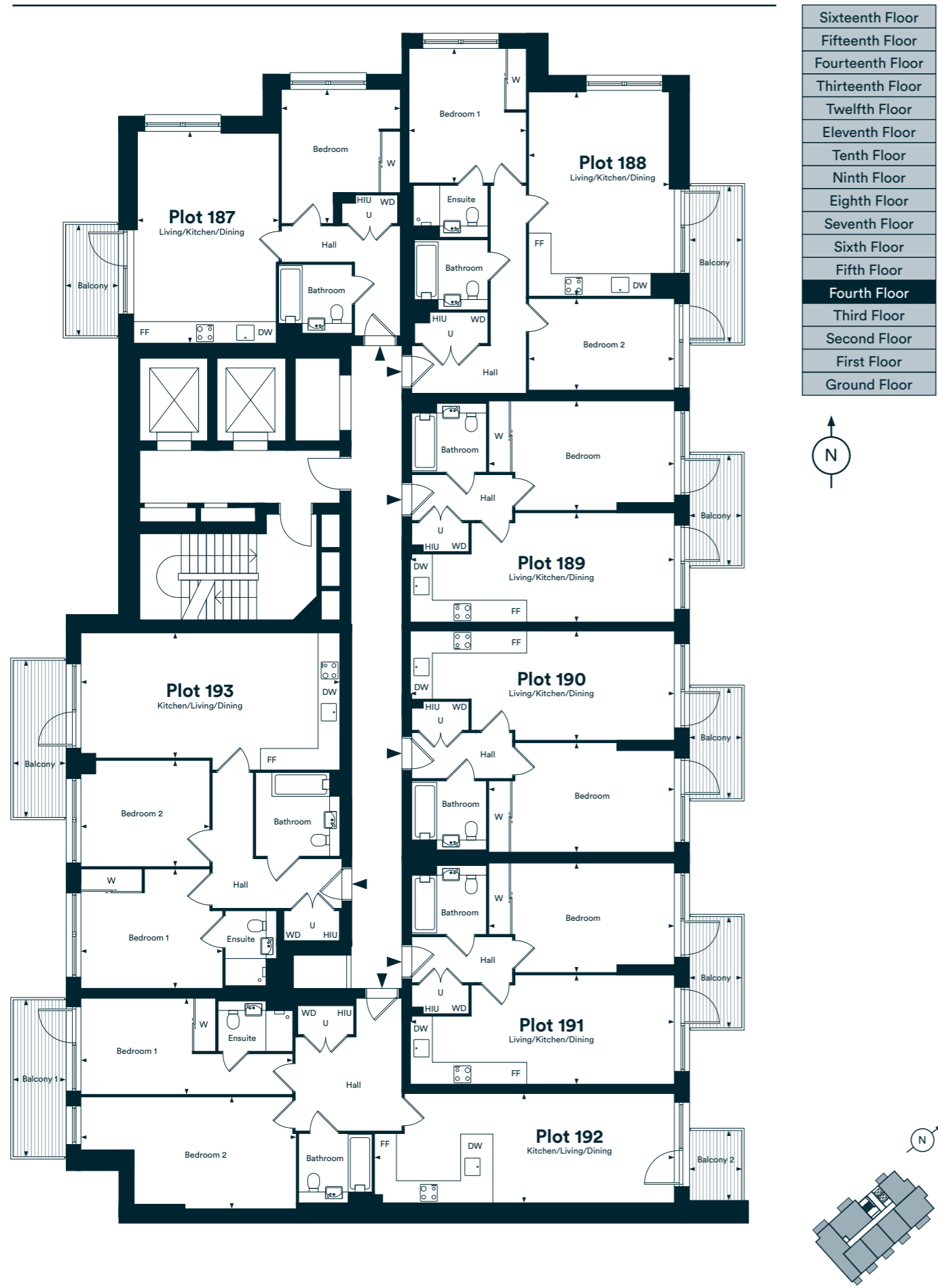
Living/Kitchen/Dining	3.70m x 7.65m	12'1" x 25'1"
Bedroom 1	3.50m x 4.20m	11'6" x 13'9"
Bedroom 2	3.10m x 3.80m	10'2" x 12'5"
<b>Total Internal Area</b>	<b>79m<sup>2</sup></b>	<b>845ft<sup>2</sup></b>
Balcony	7m <sup>2</sup>	75.3ft <sup>2</sup>

FF - Fridge/Freezer | DW - Dishwasher | W - Wardrobe | C - Cupboard  
 U - Utility Room | WD - Washer/Dryer | HIU - Heat Interface Unit

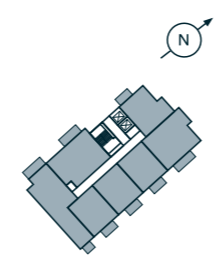
The floor plans provided are intended to only give a general indication of the proposed floor layout, are not drawn to scale and are not intended to form part of any offer, contract, warranty or representation. Measurements are given to the widest point, are approximate and are given as a guide only. They must not be relied upon as a statement or representation of fact. Do not use these measurements for carpet sizes, appliance spaces or items of furniture. Kitchen, bathroom and utility layouts may differ to build, and specific plot sizes and layouts may vary within the same unit type. Built-in wardrobe to include mirrored sliding doors, shelf and chrome hanging rail. For further clarification regarding specific individual plots, please ask our Sales Associates.

# Fourth Floor

Plots 187, 188, 189, 190, 191, 192 & 193



Sixteenth Floor
Fifteenth Floor
Fourteenth Floor
Thirteenth Floor
Twelfth Floor
Eleventh Floor
Tenth Floor
Ninth Floor
Eighth Floor
Seventh Floor
Sixth Floor
Fifth Floor
<b>Fourth Floor</b>
Third Floor
Second Floor
First Floor
Ground Floor



## Plot 187 - 1 Bedroom Apartment

Living/Kitchen/Dining	4.20m x 6.25m	13'9" x 20'6"
Bedroom	3.50m x 3.95m	11'6" x 12'11"
<b>Total Internal Area</b>	<b>53m<sup>2</sup></b>	<b>574ft<sup>2</sup></b>
Balcony	5m <sup>2</sup>	53.8ft <sup>2</sup>

## Plot 188 - 2 Bedroom Apartment

Living/Kitchen/Dining	4.15m x 6.00m	13'7" x 19'9"
Bedroom 1	3.45m x 3.95m	11'4" x 12'11"
Bedroom 2	4.30m x 2.70m	14'0" x 8'10"
<b>Total Internal Area</b>	<b>74m<sup>2</sup></b>	<b>792ft<sup>2</sup></b>
Balcony	7m <sup>2</sup>	75.3ft <sup>2</sup>

## Plots 189, 190 & 191 - 1 Bedroom Apartment

Living/Kitchen/Dining	7.70m x 3.20m	25'3" x 10'7"
Bedroom	3.25m x 5.45m	10'7" x 17'11"
<b>Total Internal Area</b>	<b>51m<sup>2</sup></b>	<b>544ft<sup>2</sup></b>
Balcony	5m <sup>2</sup>	53.8ft <sup>2</sup>

## Plot 192 - 2 Bedroom Apartment

Living/Kitchen/Dining	8.85m x 3.25m	29'1" x 10'7"
Bedroom 1	6.25m x 2.85m	20'6" x 9'4"
Bedroom 2	6.35m x 3.30m	20'11" x 10'9"
<b>Total Internal Area</b>	<b>84m<sup>2</sup></b>	<b>900ft<sup>2</sup></b>
Balcony 1	3.1m <sup>2</sup>	34.7ft <sup>2</sup>
Balcony 2	7.2m <sup>2</sup>	77.5ft <sup>2</sup>

## Plot 193 - 2 Bedroom Apartment

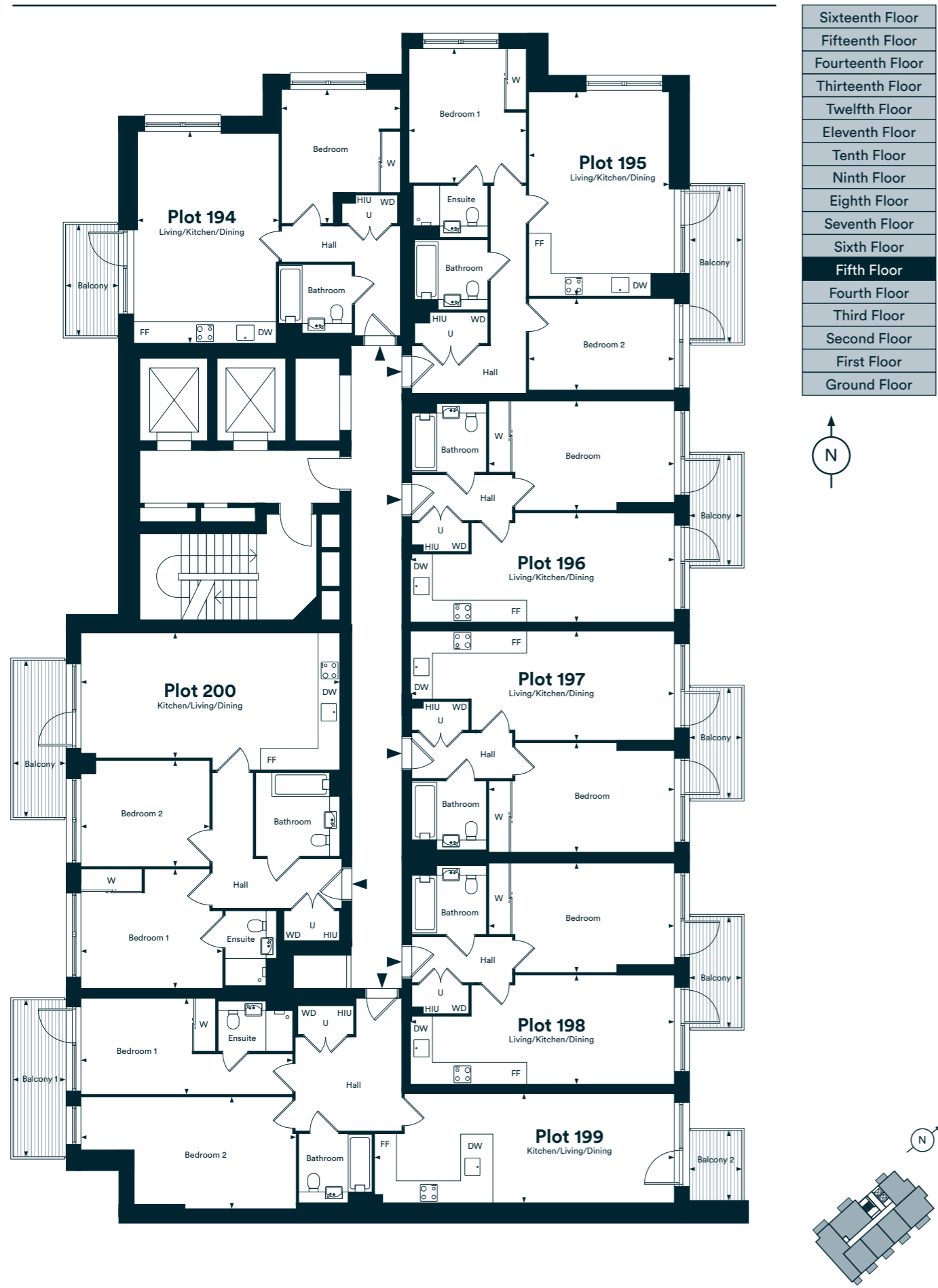
Living/Kitchen/Dining	3.70m x 7.65m	12'1" x 25'1"
Bedroom 1	3.50m x 4.20m	11'6" x 13'9"
Bedroom 2	3.10m x 3.80m	10'2" x 12'5"
<b>Total Internal Area</b>	<b>79m<sup>2</sup></b>	<b>845ft<sup>2</sup></b>
Balcony	7m <sup>2</sup>	75.3ft <sup>2</sup>

FF - Fridge/Freezer | DW - Dishwasher | W - Wardrobe | C - Cupboard  
 U - Utility Room | WD - Washer/Dryer | HIU - Heat Interface Unit

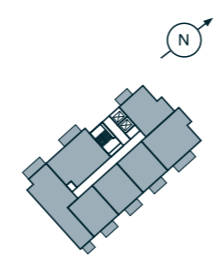
The floor plans provided are intended to only give a general indication of the proposed floor layout, are not drawn to scale and are not intended to form part of any offer, contract, warranty or representation. Measurements are given to the widest point, are approximate and are given as a guide only. They must not be relied upon as a statement or representation of fact. Do not use these measurements for carpet sizes, appliance spaces or items of furniture. Kitchen, bathroom and utility layouts may differ to build, and specific plot sizes and layouts may vary within the same unit type. Built-in wardrobe to include mirrored sliding doors, shelf and chrome hanging rail. For further clarification regarding specific individual plots, please ask our Sales Associates.

# Fifth Floor

Plots 194, 195, 196, 197, 198, 199 & 200



Sixteenth Floor
Fifteenth Floor
Fourteenth Floor
Thirteenth Floor
Twelfth Floor
Eleventh Floor
Tenth Floor
Ninth Floor
Eighth Floor
Seventh Floor
Sixth Floor
<b>Fifth Floor</b>
Fourth Floor
Third Floor
Second Floor
First Floor
Ground Floor



## Plot 194 - 1 Bedroom Apartment

Living/Kitchen/Dining	4.20m x 6.25m	13'9" x 20'6"
Bedroom	3.50m x 3.95m	11'6" x 12'11"
<b>Total Internal Area</b>	<b>53m<sup>2</sup></b>	<b>574ft<sup>2</sup></b>
Balcony	5m <sup>2</sup>	53.8ft <sup>2</sup>

## Plot 195 - 2 Bedroom Apartment

Living/Kitchen/Dining	4.15m x 6.00m	13'7" x 19'9"
Bedroom 1	3.45m x 3.95m	11'4" x 12'11"
Bedroom 2	4.30m x 2.70m	14'0" x 8'10"
<b>Total Internal Area</b>	<b>74m<sup>2</sup></b>	<b>792ft<sup>2</sup></b>
Balcony	7m <sup>2</sup>	75.3ft <sup>2</sup>

## Plots 196, 197 & 198 - 1 Bedroom Apartment

Living/Kitchen/Dining	7.70m x 3.20m	25'3" x 10'7"
Bedroom	3.25m x 5.45m	10'7" x 17'11"
<b>Total Internal Area</b>	<b>51m<sup>2</sup></b>	<b>544ft<sup>2</sup></b>
Balcony	5m <sup>2</sup>	53.8ft <sup>2</sup>

## Plot 199 - 2 Bedroom Apartment

Living/Kitchen/Dining	8.85m x 3.25m	29'1" x 10'7"
Bedroom 1	6.25m x 2.85m	20'6" x 9'4"
Bedroom 2	6.35m x 3.30m	20'11" x 10'9"
<b>Total Internal Area</b>	<b>84m<sup>2</sup></b>	<b>900ft<sup>2</sup></b>
Balcony 1	3.1m <sup>2</sup>	34.7ft <sup>2</sup>
Balcony 2	7.2m <sup>2</sup>	77.5ft <sup>2</sup>

## Plot 200 - 2 Bedroom Apartment

Living/Kitchen/Dining	3.70m x 7.65m	12'1" x 25'1"
Bedroom 1	3.50m x 4.20m	11'6" x 13'9"
Bedroom 2	3.10m x 3.80m	10'2" x 12'5"
<b>Total Internal Area</b>	<b>79m<sup>2</sup></b>	<b>845ft<sup>2</sup></b>
Balcony	7m <sup>2</sup>	75.3ft <sup>2</sup>

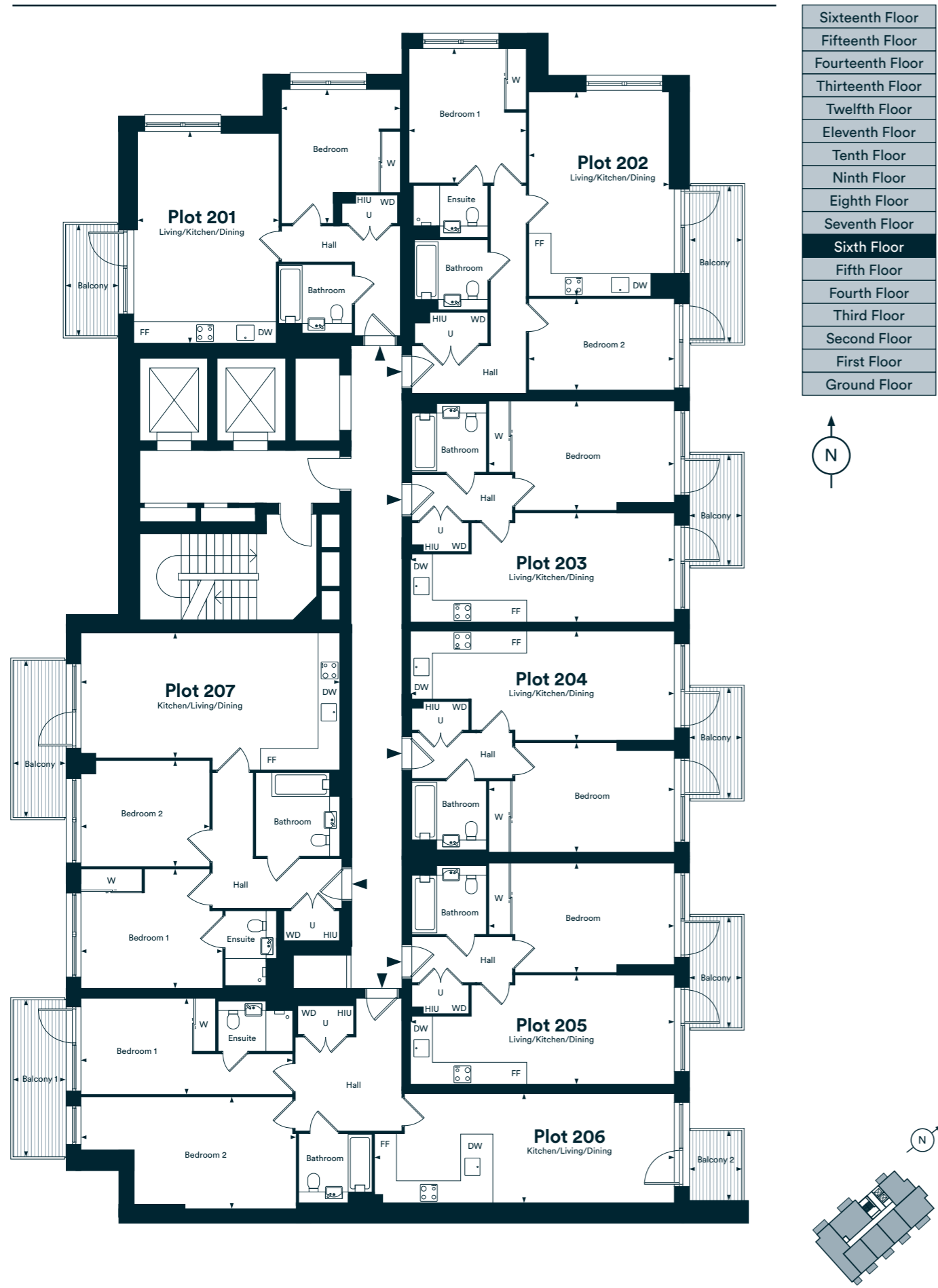
FF - Fridge/Freezer | DW - Dishwasher | W - Wardrobe | C - Cupboard  
 U - Utility Room | WD - Washer/Dryer | HIU - Heat Interface Unit

The floor plans provided are intended to only give a general indication of the proposed floor layout, are not drawn to scale and are not intended to form part of any offer, contract, warranty or representation. Measurements are given to the widest point, are approximate and are given as a guide only. They must not be relied upon as a statement or representation of fact. Do not use these measurements for carpet sizes, appliance spaces or items of furniture. Kitchen, bathroom and utility layouts may differ to build, and specific plot sizes and layouts may vary within the same unit type. Built-in wardrobe to include mirrored sliding doors, shelf and chrome hanging rail. For further clarification regarding specific individual plots, please ask our Sales Associates.

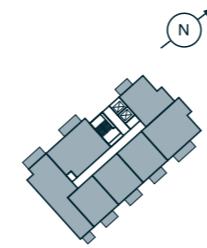


# Sixth Floor

Plots 201, 202, 203, 204, 205, 206 & 207



Sixteenth Floor
Fifteenth Floor
Fourteenth Floor
Thirteenth Floor
Twelfth Floor
Eleventh Floor
Tenth Floor
Ninth Floor
Eighth Floor
Seventh Floor
<b>Sixth Floor</b>
Fifth Floor
Fourth Floor
Third Floor
Second Floor
First Floor
Ground Floor



## Plot 201 - 1 Bedroom Apartment

Living/Kitchen/Dining	4.20m x 6.25m	13'9" x 20'6"
Bedroom	3.50m x 3.95m	11'6" x 12'11"
<b>Total Internal Area</b>	<b>53m<sup>2</sup></b>	<b>574ft<sup>2</sup></b>
Balcony	5m <sup>2</sup>	53.8ft <sup>2</sup>

## Plot 202 - 2 Bedroom Apartment

Living/Kitchen/Dining	4.15m x 6.00m	13'7" x 19'9"
Bedroom 1	3.45m x 3.95m	11'4" x 12'11"
Bedroom 2	4.30m x 2.70m	14'0" x 8'10"
<b>Total Internal Area</b>	<b>74m<sup>2</sup></b>	<b>792ft<sup>2</sup></b>
Balcony	7m <sup>2</sup>	75.3ft <sup>2</sup>

## Plots 203, 204 & 205 - 1 Bedroom Apartment

Living/Kitchen/Dining	7.70m x 3.20m	25'3" x 10'7"
Bedroom	3.25m x 5.45m	10'7" x 17'11"
<b>Total Internal Area</b>	<b>51m<sup>2</sup></b>	<b>544ft<sup>2</sup></b>
Balcony	5m <sup>2</sup>	53.8ft <sup>2</sup>

## Plot 206 - 2 Bedroom Apartment

Living/Kitchen/Dining	8.85m x 3.25m	29'1" x 10'7"
Bedroom 1	6.25m x 2.85m	20'6" x 9'4"
Bedroom 2	6.35m x 3.30m	20'11" x 10'9"
<b>Total Internal Area</b>	<b>84m<sup>2</sup></b>	<b>900ft<sup>2</sup></b>
Balcony 1	3.1m <sup>2</sup>	34.7ft <sup>2</sup>
Balcony 2	7.2m <sup>2</sup>	77.5ft <sup>2</sup>

## Plot 207 - 2 Bedroom Apartment

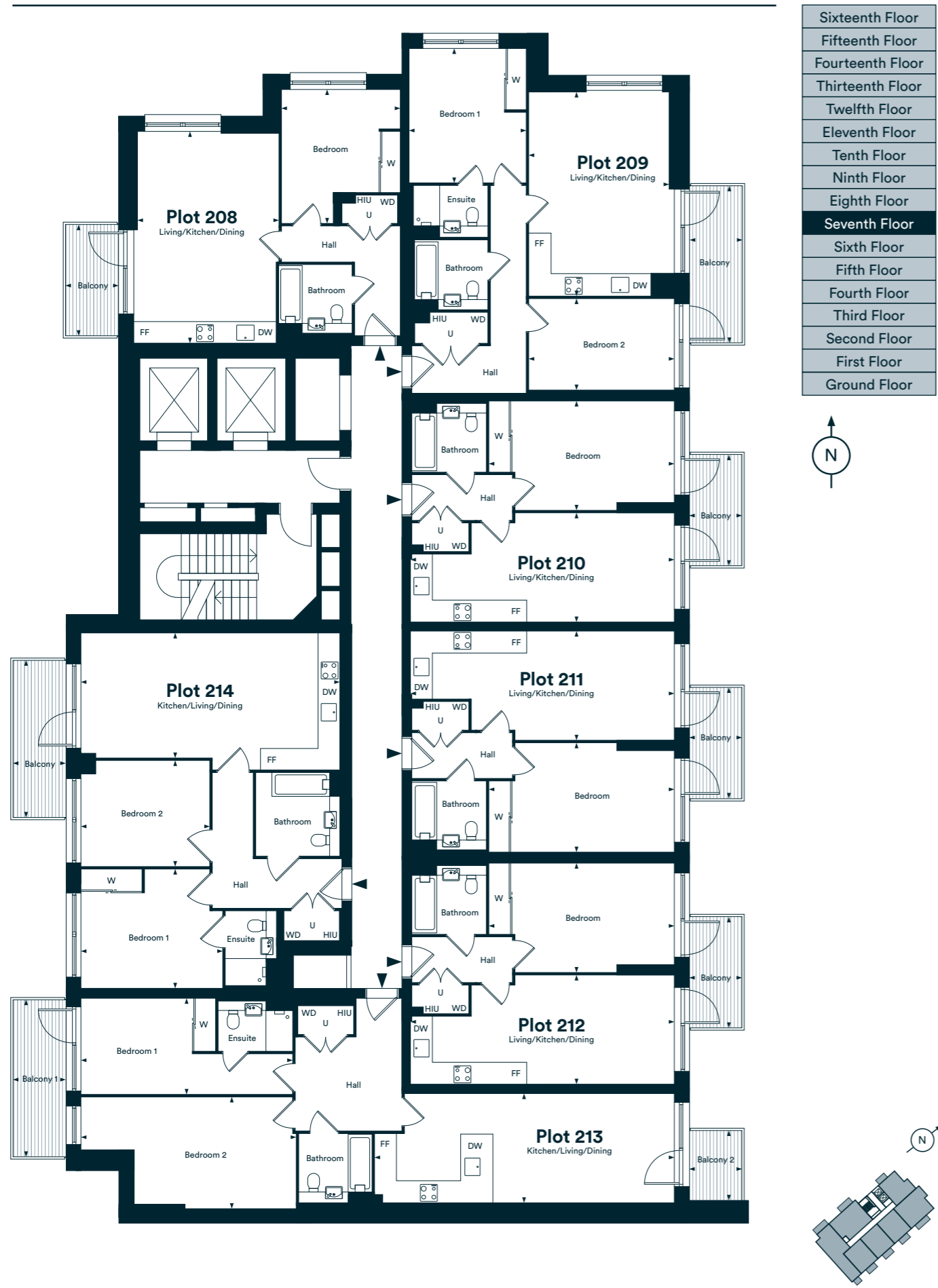
Living/Kitchen/Dining	3.70m x 7.65m	12'1" x 25'1"
Bedroom 1	3.50m x 4.20m	11'6" x 13'9"
Bedroom 2	3.10m x 3.80m	10'2" x 12'5"
<b>Total Internal Area</b>	<b>79m<sup>2</sup></b>	<b>845ft<sup>2</sup></b>
Balcony	7m <sup>2</sup>	75.3ft <sup>2</sup>

FF - Fridge/Freezer | DW - Dishwasher | W - Wardrobe | C - Cupboard  
 U - Utility Room | WD - Washer/Dryer | HIU - Heat Interface Unit

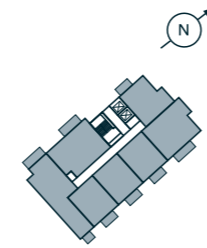
The floor plans provided are intended to only give a general indication of the proposed floor layout, are not drawn to scale and are not intended to form part of any offer, contract, warranty or representation. Measurements are given to the widest point, are approximate and are given as a guide only. They must not be relied upon as a statement or representation of fact. Do not use these measurements for carpet sizes, appliance spaces or items of furniture. Kitchen, bathroom and utility layouts may differ to build, and specific plot sizes and layouts may vary within the same unit type. Built-in wardrobe to include mirrored sliding doors, shelf and chrome hanging rail. For further clarification regarding specific individual plots, please ask our Sales Associates.

# Seventh Floor

Plots 208, 209, 210, 211, 212, 213 & 214



Sixteenth Floor
Fifteenth Floor
Fourteenth Floor
Thirteenth Floor
Twelfth Floor
Eleventh Floor
Tenth Floor
Ninth Floor
Eighth Floor
<b>Seventh Floor</b>
Sixth Floor
Fifth Floor
Fourth Floor
Third Floor
Second Floor
First Floor
Ground Floor



## Plot 208 - 1 Bedroom Apartment

Living/Kitchen/Dining	4.20m x 6.25m	13'9" x 20'6"
Bedroom	3.50m x 3.95m	11'6" x 12'11"
<b>Total Internal Area</b>	<b>53m<sup>2</sup></b>	<b>574ft<sup>2</sup></b>
Balcony	5m <sup>2</sup>	53.8ft <sup>2</sup>

## Plot 209 - 2 Bedroom Apartment

Living/Kitchen/Dining	4.15m x 6.00m	13'7" x 19'9"
Bedroom 1	3.45m x 3.95m	11'4" x 12'11"
Bedroom 2	4.30m x 2.70m	14'0" x 8'10"
<b>Total Internal Area</b>	<b>74m<sup>2</sup></b>	<b>792ft<sup>2</sup></b>
Balcony	7m <sup>2</sup>	75.3ft <sup>2</sup>

## Plots 210, 211 & 212 - 1 Bedroom Apartment

Living/Kitchen/Dining	7.70m x 3.20m	25'3" x 10'7"
Bedroom	3.25m x 5.45m	10'7" x 17'11"
<b>Total Internal Area</b>	<b>51m<sup>2</sup></b>	<b>544ft<sup>2</sup></b>
Balcony	5m <sup>2</sup>	53.8ft <sup>2</sup>

## Plot 213 - 2 Bedroom Apartment

Living/Kitchen/Dining	8.85m x 3.25m	29'1" x 10'7"
Bedroom 1	6.25m x 2.85m	20'6" x 9'4"
Bedroom 2	6.35m x 3.30m	20'11" x 10'9"
<b>Total Internal Area</b>	<b>84m<sup>2</sup></b>	<b>900ft<sup>2</sup></b>
Balcony 1	3.1m <sup>2</sup>	34.7ft <sup>2</sup>
Balcony 2	7.2m <sup>2</sup>	77.5ft <sup>2</sup>

## Plot 214 - 2 Bedroom Apartment

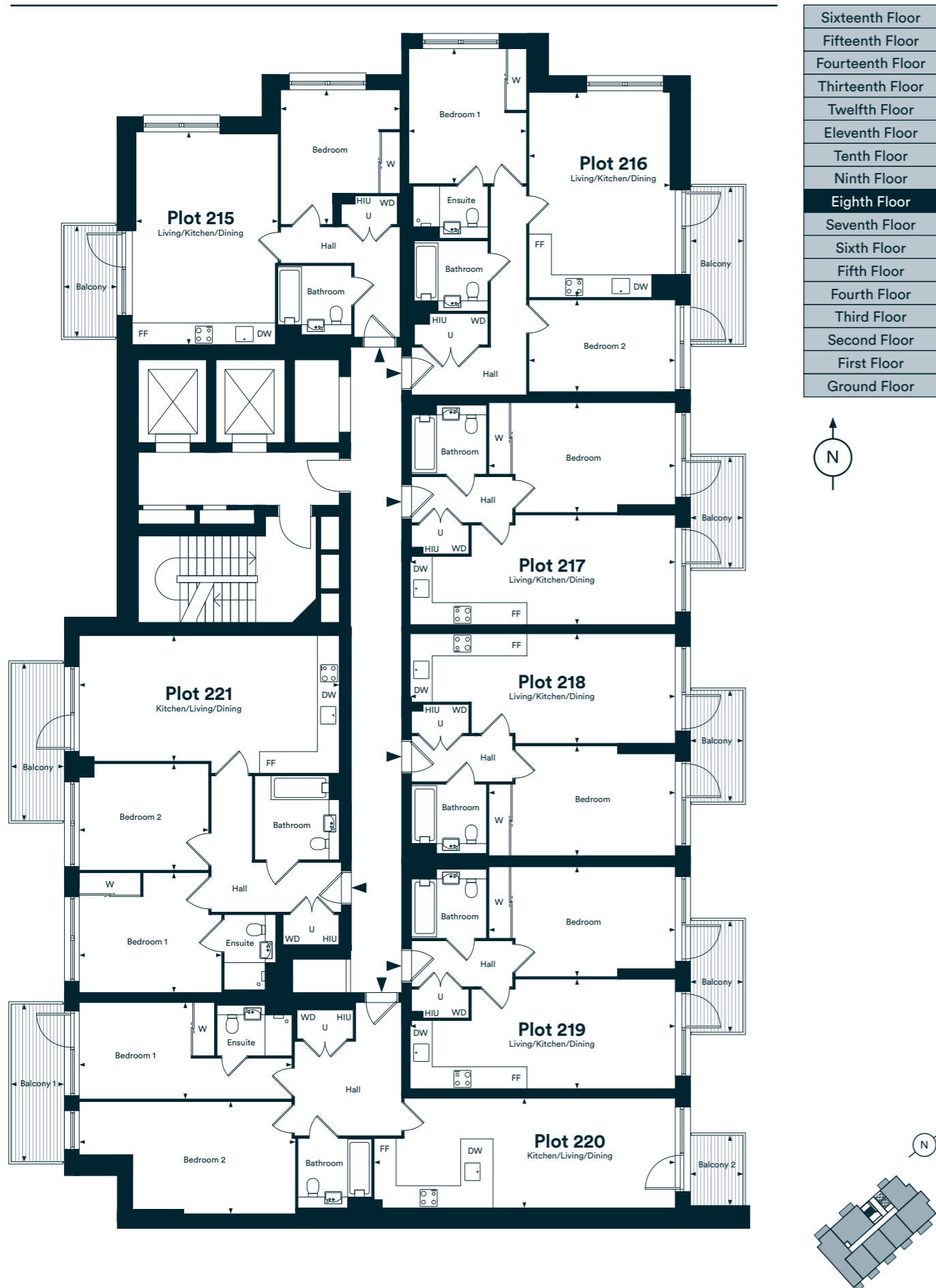
Living/Kitchen/Dining	3.70m x 7.65m	12'1" x 25'1"
Bedroom 1	3.50m x 4.20m	11'6" x 13'9"
Bedroom 2	3.10m x 3.80m	10'2" x 12'5"
<b>Total Internal Area</b>	<b>79m<sup>2</sup></b>	<b>845ft<sup>2</sup></b>
Balcony	7m <sup>2</sup>	75.3ft <sup>2</sup>

FF - Fridge/Freezer | DW - Dishwasher | W - Wardrobe | C - Cupboard  
 U - Utility Room | WD - Washer/Dryer | HIU - Heat Interface Unit

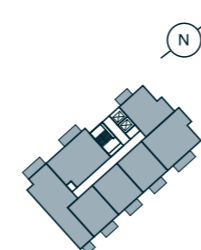
The floor plans provided are intended to only give a general indication of the proposed floor layout, are not drawn to scale and are not intended to form part of any offer, contract, warranty or representation. Measurements are given to the widest point, are approximate and are given as a guide only. They must not be relied upon as a statement or representation of fact. Do not use these measurements for carpet sizes, appliance spaces or items of furniture. Kitchen, bathroom and utility layouts may differ to build, and specific plot sizes and layouts may vary within the same unit type. Built-in wardrobe to include mirrored sliding doors, shelf and chrome hanging rail. For further clarification regarding specific individual plots, please ask our Sales Associates.

# Eighth Floor

Plots 215, 216, 217, 218, 219, 220 & 221



Sixteenth Floor
Fifteenth Floor
Fourteenth Floor
Thirteenth Floor
Twelfth Floor
Eleventh Floor
Tenth Floor
Ninth Floor
<b>Eighth Floor</b>
Seventh Floor
Sixth Floor
Fifth Floor
Fourth Floor
Third Floor
Second Floor
First Floor
Ground Floor



## Plot 215 - 1 Bedroom Apartment

Living/Kitchen/Dining	4.20m x 6.25m	13'9" x 20'6"
Bedroom	3.50m x 3.95m	11'6" x 12'11"
<b>Total Internal Area</b>	<b>53m<sup>2</sup></b>	<b>574ft<sup>2</sup></b>
Balcony	5m <sup>2</sup>	53.8ft <sup>2</sup>

## Plot 216 - 2 Bedroom Apartment

Living/Kitchen/Dining	4.15m x 6.00m	13'7" x 19'9"
Bedroom 1	3.45m x 3.95m	11'4" x 12'11"
Bedroom 2	4.30m x 2.70m	14'0" x 8'10"
<b>Total Internal Area</b>	<b>74m<sup>2</sup></b>	<b>792ft<sup>2</sup></b>
Balcony	7m <sup>2</sup>	75.3ft <sup>2</sup>

## Plots 217, 218 & 219 - 1 Bedroom Apartment

Living/Kitchen/Dining	7.70m x 3.20m	25'3" x 10'7"
Bedroom	3.25m x 5.45m	10'7" x 17'11"
<b>Total Internal Area</b>	<b>51m<sup>2</sup></b>	<b>544ft<sup>2</sup></b>
Balcony	5m <sup>2</sup>	53.8ft <sup>2</sup>

## Plot 220 - 2 Bedroom Apartment

Living/Kitchen/Dining	8.85m x 3.25m	29'1" x 10'7"
Bedroom 1	6.25m x 2.85m	20'6" x 9'4"
Bedroom 2	6.35m x 3.30m	20'11" x 10'9"
<b>Total Internal Area</b>	<b>84m<sup>2</sup></b>	<b>900ft<sup>2</sup></b>
Balcony 1	3.1m <sup>2</sup>	34.7ft <sup>2</sup>
Balcony 2	7.2m <sup>2</sup>	77.5ft <sup>2</sup>

## Plot 221 - 2 Bedroom Apartment

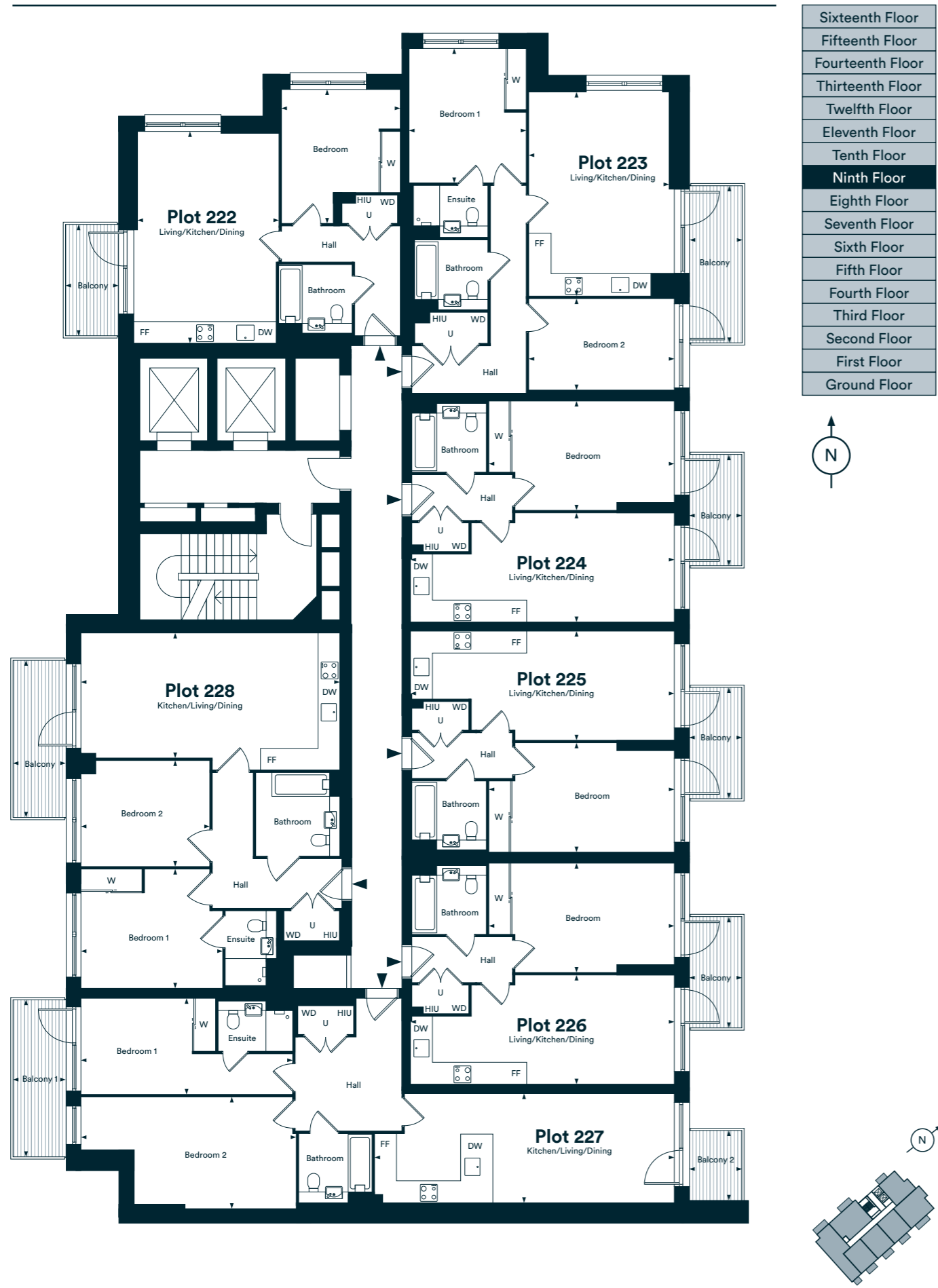
Living/Kitchen/Dining	3.70m x 7.65m	12'1" x 25'1"
Bedroom 1	3.50m x 4.20m	11'6" x 13'9"
Bedroom 2	3.10m x 3.80m	10'2" x 12'5"
<b>Total Internal Area</b>	<b>79m<sup>2</sup></b>	<b>845ft<sup>2</sup></b>
Balcony	7m <sup>2</sup>	75.3ft <sup>2</sup>

FF - Fridge/Freezer | DW - Dishwasher | W - Wardrobe | C - Cupboard  
 U - Utility Room | WD - Washer/Dryer | HIU - Heat Interface Unit

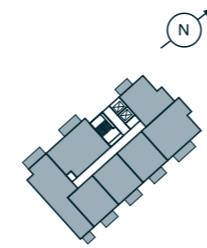
The floor plans provided are intended to only give a general indication of the proposed floor layout, are not drawn to scale and are not intended to form part of any offer, contract, warranty or representation. Measurements are given to the widest point, are approximate and are given as a guide only. They must not be relied upon as a statement or representation of fact. Do not use these measurements for carpet sizes, appliance spaces or items of furniture. Kitchen, bathroom and utility layouts may differ to build, and specific plot sizes and layouts may vary within the same unit type. Built-in wardrobe to include mirrored sliding doors, shelf and chrome hanging rail. For further clarification regarding specific individual plots, please ask our Sales Associates.

# Ninth Floor

Plots 222, 223, 224, 225, 226, 227 & 228



Sixteenth Floor
Fifteenth Floor
Fourteenth Floor
Thirteenth Floor
Twelfth Floor
Eleventh Floor
Tenth Floor
<b>Ninth Floor</b>
Eighth Floor
Seventh Floor
Sixth Floor
Fifth Floor
Fourth Floor
Third Floor
Second Floor
First Floor
Ground Floor



## Plot 222 - 1 Bedroom Apartment

Living/Kitchen/Dining	4.20m x 6.25m	13'9" x 20'6"
Bedroom	3.50m x 3.95m	11'6" x 12'11"
<b>Total Internal Area</b>	<b>53m<sup>2</sup></b>	<b>574ft<sup>2</sup></b>
Balcony	5m <sup>2</sup>	53.8ft <sup>2</sup>

## Plot 223 - 2 Bedroom Apartment

Living/Kitchen/Dining	4.15m x 6.00m	13'7" x 19'9"
Bedroom 1	3.45m x 3.95m	11'4" x 12'11"
Bedroom 2	4.30m x 2.70m	14'0" x 8'10"
<b>Total Internal Area</b>	<b>74m<sup>2</sup></b>	<b>792ft<sup>2</sup></b>
Balcony	7m <sup>2</sup>	75.3ft <sup>2</sup>

## Plots 224, 225 & 226 - 1 Bedroom Apartment

Living/Kitchen/Dining	7.70m x 3.20m	25'3" x 10'7"
Bedroom	3.25m x 5.45m	10'7" x 17'11"
<b>Total Internal Area</b>	<b>51m<sup>2</sup></b>	<b>544ft<sup>2</sup></b>
Balcony	5m <sup>2</sup>	53.8ft <sup>2</sup>

## Plot 227 - 2 Bedroom Apartment

Living/Kitchen/Dining	8.85m x 3.25m	29'1" x 10'7"
Bedroom 1	6.25m x 2.85m	20'6" x 9'4"
Bedroom 2	6.35m x 3.30m	20'11" x 10'9"
<b>Total Internal Area</b>	<b>84m<sup>2</sup></b>	<b>900ft<sup>2</sup></b>
Balcony 1	3.1m <sup>2</sup>	34.7ft <sup>2</sup>
Balcony 2	7.2m <sup>2</sup>	77.5ft <sup>2</sup>

## Plot 228 - 2 Bedroom Apartment

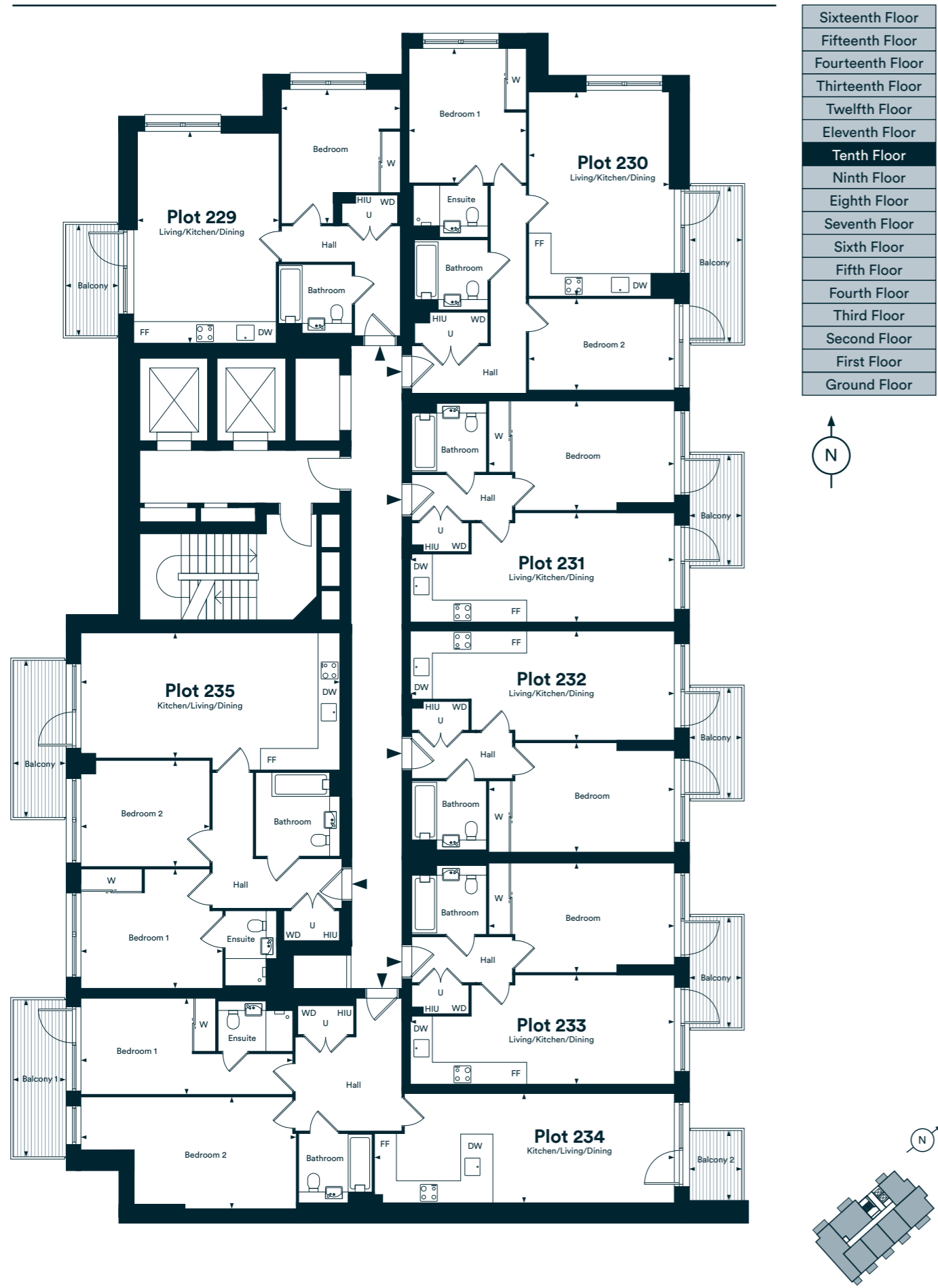
Living/Kitchen/Dining	3.70m x 7.65m	12'1" x 25'1"
Bedroom 1	3.50m x 4.20m	11'6" x 13'9"
Bedroom 2	3.10m x 3.80m	10'2" x 12'5"
<b>Total Internal Area</b>	<b>79m<sup>2</sup></b>	<b>845ft<sup>2</sup></b>
Balcony	7m <sup>2</sup>	75.3ft <sup>2</sup>

FF - Fridge/Freezer | DW - Dishwasher | W - Wardrobe | C - Cupboard  
 U - Utility Room | WD - Washer/Dryer | HIU - Heat Interface Unit

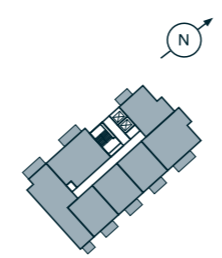
The floor plans provided are intended to only give a general indication of the proposed floor layout, are not drawn to scale and are not intended to form part of any offer, contract, warranty or representation. Measurements are given to the widest point, are approximate and are given as a guide only. They must not be relied upon as a statement or representation of fact. Do not use these measurements for carpet sizes, appliance spaces or items of furniture. Kitchen, bathroom and utility layouts may differ to build, and specific plot sizes and layouts may vary within the same unit type. Built-in wardrobe to include mirrored sliding doors, shelf and chrome hanging rail. For further clarification regarding specific individual plots, please ask our Sales Associates.

# Tenth Floor

Plots 229, 230, 231, 232, 233, 234 & 235



Sixteenth Floor
Fifteenth Floor
Fourteenth Floor
Thirteenth Floor
Twelfth Floor
Eleventh Floor
<b>Tenth Floor</b>
Ninth Floor
Eighth Floor
Seventh Floor
Sixth Floor
Fifth Floor
Fourth Floor
Third Floor
Second Floor
First Floor
Ground Floor



## Plot 229 - 1 Bedroom Apartment

Living/Kitchen/Dining	4.20m x 6.25m	13'9" x 20'6"
Bedroom	3.50m x 3.95m	11'6" x 12'11"
<b>Total Internal Area</b>	<b>53m<sup>2</sup></b>	<b>574ft<sup>2</sup></b>
Balcony	5m <sup>2</sup>	53.8ft <sup>2</sup>

## Plot 230 - 2 Bedroom Apartment

Living/Kitchen/Dining	4.15m x 6.00m	13'7" x 19'9"
Bedroom 1	3.45m x 3.95m	11'4" x 12'11"
Bedroom 2	4.30m x 2.70m	14'0" x 8'10"
<b>Total Internal Area</b>	<b>74m<sup>2</sup></b>	<b>792ft<sup>2</sup></b>
Balcony	7m <sup>2</sup>	75.3ft <sup>2</sup>

## Plots 231, 232 & 233 - 1 Bedroom Apartment

Living/Kitchen/Dining	7.70m x 3.20m	25'3" x 10'7"
Bedroom	3.25m x 5.45m	10'7" x 17'11"
<b>Total Internal Area</b>	<b>51m<sup>2</sup></b>	<b>544ft<sup>2</sup></b>
Balcony	5m <sup>2</sup>	53.8ft <sup>2</sup>

## Plot 234 - 2 Bedroom Apartment

Living/Kitchen/Dining	8.85m x 3.25m	29'1" x 10'7"
Bedroom 1	6.25m x 2.85m	20'6" x 9'4"
Bedroom 2	6.35m x 3.30m	20'11" x 10'9"
<b>Total Internal Area</b>	<b>84m<sup>2</sup></b>	<b>900ft<sup>2</sup></b>
Balcony 1	3.1m <sup>2</sup>	34.7ft <sup>2</sup>
Balcony 2	7.2m <sup>2</sup>	77.5ft <sup>2</sup>

## Plot 235 - 2 Bedroom Apartment

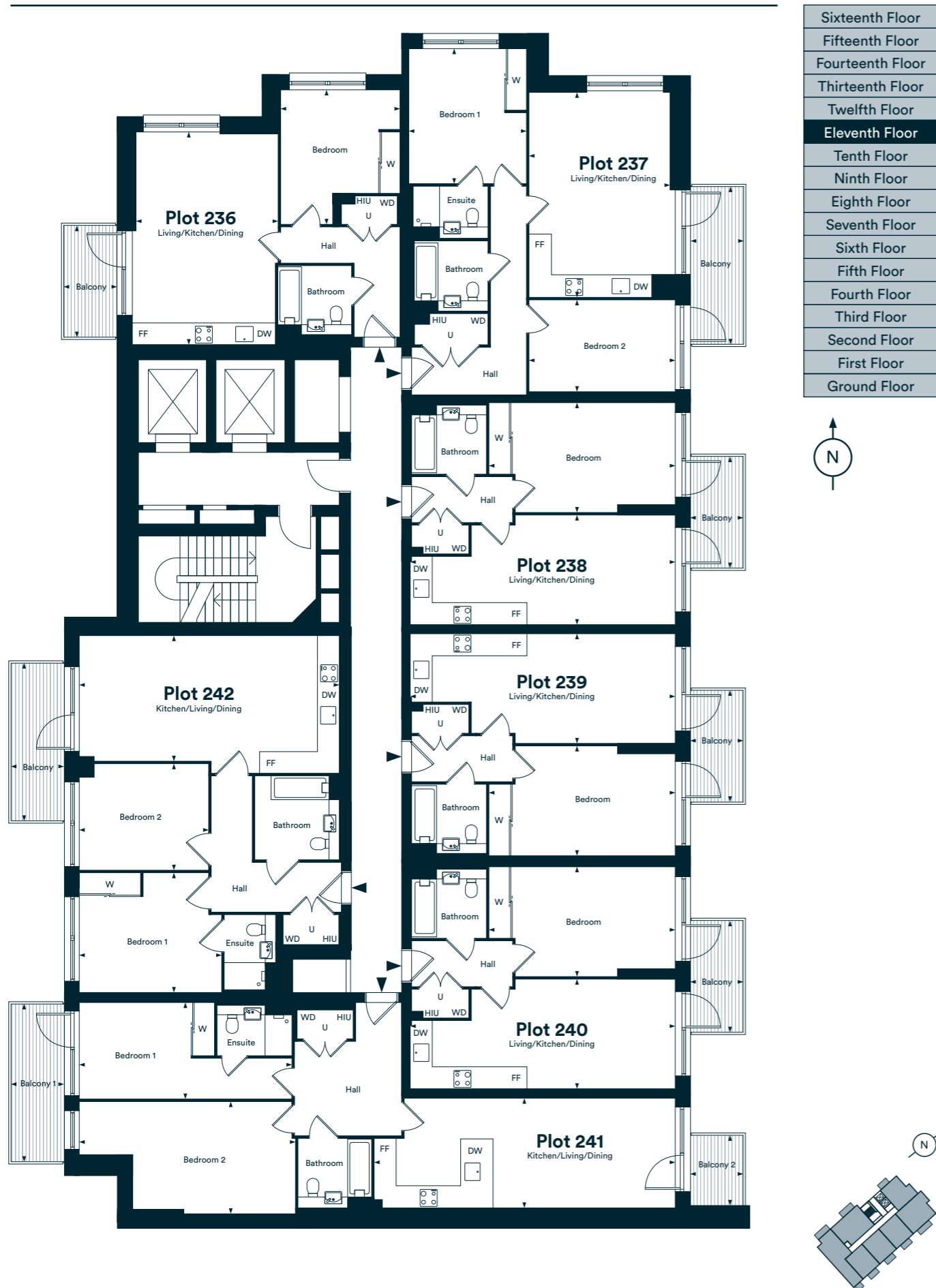
Living/Kitchen/Dining	3.70m x 7.65m	12'1" x 25'1"
Bedroom 1	3.50m x 4.20m	11'6" x 13'9"
Bedroom 2	3.10m x 3.80m	10'2" x 12'5"
<b>Total Internal Area</b>	<b>79m<sup>2</sup></b>	<b>845ft<sup>2</sup></b>
Balcony	7m <sup>2</sup>	75.3ft <sup>2</sup>

FF - Fridge/Freezer | DW - Dishwasher | W - Wardrobe | C - Cupboard  
 U - Utility Room | WD - Washer/Dryer | HIU - Heat Interface Unit

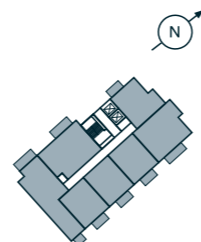
The floor plans provided are intended to only give a general indication of the proposed floor layout, are not drawn to scale and are not intended to form part of any offer, contract, warranty or representation. Measurements are given to the widest point, are approximate and are given as a guide only. They must not be relied upon as a statement or representation of fact. Do not use these measurements for carpet sizes, appliance spaces or items of furniture. Kitchen, bathroom and utility layouts may differ to build, and specific plot sizes and layouts may vary within the same unit type. Built-in wardrobe to include mirrored sliding doors, shelf and chrome hanging rail. For further clarification regarding specific individual plots, please ask our Sales Associates.

# Eleventh Floor

Plots 236, 237, 238, 239, 240, 241 & 242



Sixteenth Floor
Fifteenth Floor
Fourteenth Floor
Thirteenth Floor
Twelfth Floor
<b>Eleventh Floor</b>
Tenth Floor
Ninth Floor
Eighth Floor
Seventh Floor
Sixth Floor
Fifth Floor
Fourth Floor
Third Floor
Second Floor
First Floor
Ground Floor



## Plot 236 - 1 Bedroom Apartment

Living/Kitchen/Dining	4.20m x 6.25m	13'9" x 20'6"
Bedroom	3.50m x 3.95m	11'6" x 12'11"
<b>Total Internal Area</b>	<b>53m<sup>2</sup></b>	<b>574ft<sup>2</sup></b>
Balcony	5m <sup>2</sup>	53.8ft <sup>2</sup>

## Plot 237 - 2 Bedroom Apartment

Living/Kitchen/Dining	4.15m x 6.00m	13'7" x 19'9"
Bedroom 1	3.45m x 3.95m	11'4" x 12'11"
Bedroom 2	4.30m x 2.70m	14'0" x 8'10"
<b>Total Internal Area</b>	<b>74m<sup>2</sup></b>	<b>792ft<sup>2</sup></b>
Balcony	7m <sup>2</sup>	75.3ft <sup>2</sup>

## Plots 238, 239 & 240 - 1 Bedroom Apartment

Living/Kitchen/Dining	7.70m x 3.20m	25'3" x 10'7"
Bedroom	3.25m x 5.45m	10'7" x 17'11"
<b>Total Internal Area</b>	<b>51m<sup>2</sup></b>	<b>544ft<sup>2</sup></b>
Balcony	5m <sup>2</sup>	53.8ft <sup>2</sup>

## Plot 241 - 2 Bedroom Apartment

Living/Kitchen/Dining	8.85m x 3.25m	29'1" x 10'7"
Bedroom 1	6.25m x 2.85m	20'6" x 9'4"
Bedroom 2	6.35m x 3.30m	20'11" x 10'9"
<b>Total Internal Area</b>	<b>84m<sup>2</sup></b>	<b>900ft<sup>2</sup></b>
Balcony 1	3.1m <sup>2</sup>	34.7ft <sup>2</sup>
Balcony 2	7.2m <sup>2</sup>	77.5ft <sup>2</sup>

## Plot 242 - 2 Bedroom Apartment

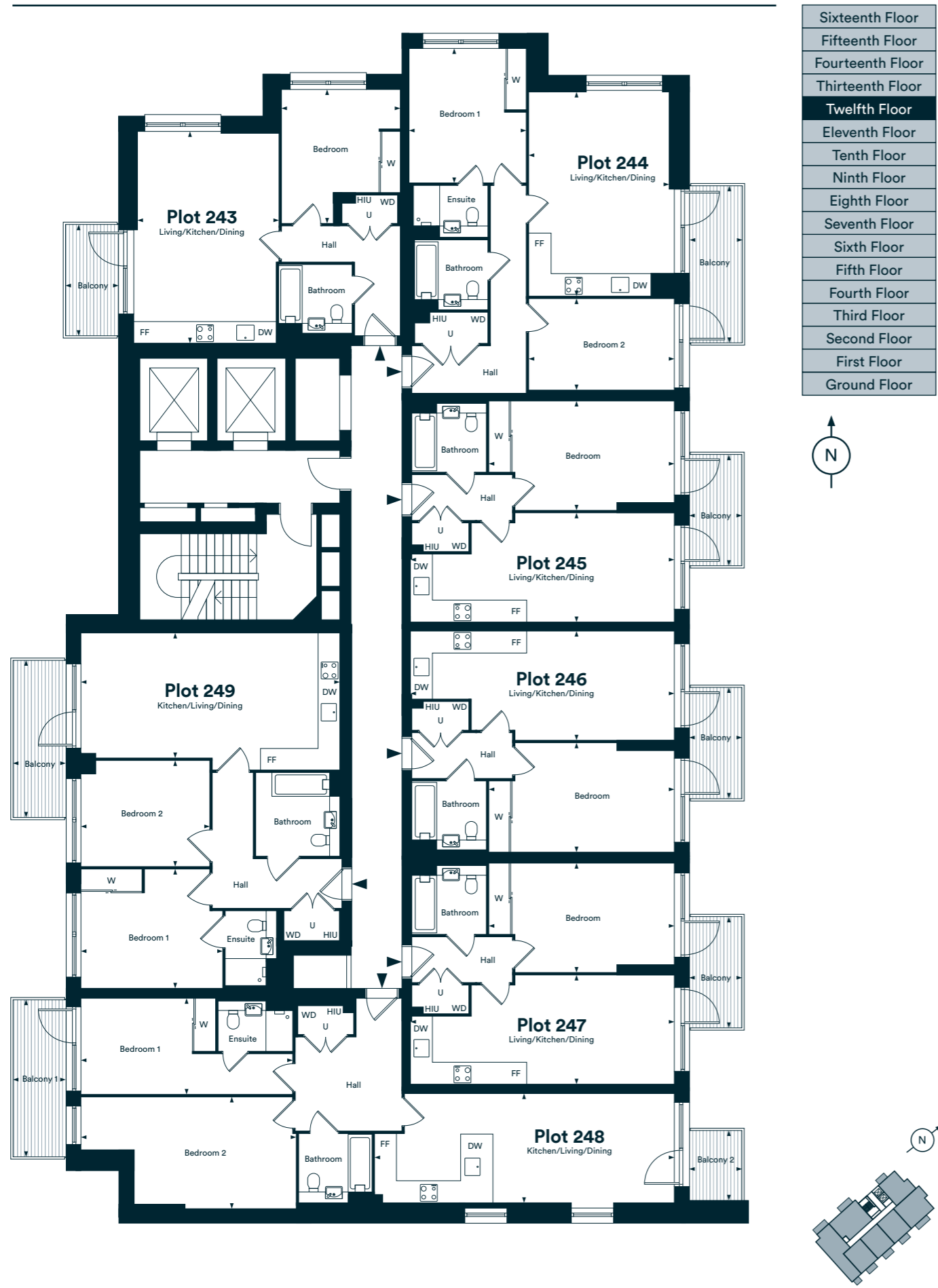
Living/Kitchen/Dining	3.70m x 7.65m	12'1" x 25'1"
Bedroom 1	3.50m x 4.20m	11'6" x 13'9"
Bedroom 2	3.10m x 3.80m	10'2" x 12'5"
<b>Total Internal Area</b>	<b>79m<sup>2</sup></b>	<b>845ft<sup>2</sup></b>
Balcony	7m <sup>2</sup>	75.3ft <sup>2</sup>

FF - Fridge/Freezer | DW - Dishwasher | W - Wardrobe | C - Cupboard  
U - Utility Room | WD - Washer/Dryer | HIU - Heat Interface Unit

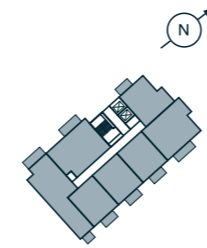
The floor plans provided are intended to only give a general indication of the proposed floor layout, are not drawn to scale and are not intended to form part of any offer, contract, warranty or representation. Measurements are given to the widest point, are approximate and are given as a guide only. They must not be relied upon as a statement or representation of fact. Do not use these measurements for carpet sizes, appliance spaces or items of furniture. Kitchen, bathroom and utility layouts may differ to build, and specific plot sizes and layouts may vary within the same unit type. Built-in wardrobe to include mirrored sliding doors, shelf and chrome hanging rail. For further clarification regarding specific individual plots, please ask our Sales Associates.

# Twelfth Floor

Plots 243, 244, 245, 246, 247, 248 & 249



Sixteenth Floor
Fifteenth Floor
Fourteenth Floor
Thirteenth Floor
<b>Twelfth Floor</b>
Eleventh Floor
Tenth Floor
Ninth Floor
Eighth Floor
Seventh Floor
Sixth Floor
Fifth Floor
Fourth Floor
Third Floor
Second Floor
First Floor
Ground Floor



## Plot 243 - 1 Bedroom Apartment

Living/Kitchen/Dining	4.20m x 6.25m	13'9" x 20'6"
Bedroom	3.50m x 3.95m	11'6" x 12'11"
<b>Total Internal Area</b>	<b>53m<sup>2</sup></b>	<b>574ft<sup>2</sup></b>
Balcony	5m <sup>2</sup>	53.8ft <sup>2</sup>

## Plot 244 - 2 Bedroom Apartment

Living/Kitchen/Dining	4.15m x 6.00m	13'7" x 19'9"
Bedroom 1	3.45m x 3.95m	11'4" x 12'11"
Bedroom 2	4.30m x 2.70m	14'0" x 8'10"
<b>Total Internal Area</b>	<b>74m<sup>2</sup></b>	<b>792ft<sup>2</sup></b>
Balcony	7m <sup>2</sup>	75.3ft <sup>2</sup>

## Plots 245, 246 & 247 - 1 Bedroom Apartment

Living/Kitchen/Dining	7.70m x 3.20m	25'3" x 10'7"
Bedroom	3.25m x 5.45m	10'7" x 17'11"
<b>Total Internal Area</b>	<b>51m<sup>2</sup></b>	<b>544ft<sup>2</sup></b>
Balcony	5m <sup>2</sup>	53.8ft <sup>2</sup>

## Plot 248 - 2 Bedroom Apartment

Living/Kitchen/Dining	8.85m x 3.25m	29'1" x 10'7"
Bedroom 1	6.25m x 2.85m	20'6" x 9'4"
Bedroom 2	6.35m x 3.30m	20'11" x 10'9"
<b>Total Internal Area</b>	<b>84m<sup>2</sup></b>	<b>900ft<sup>2</sup></b>
Balcony 1	3.1m <sup>2</sup>	34.7ft <sup>2</sup>
Balcony 2	7.2m <sup>2</sup>	77.5ft <sup>2</sup>

## Plot 249 - 2 Bedroom Apartment

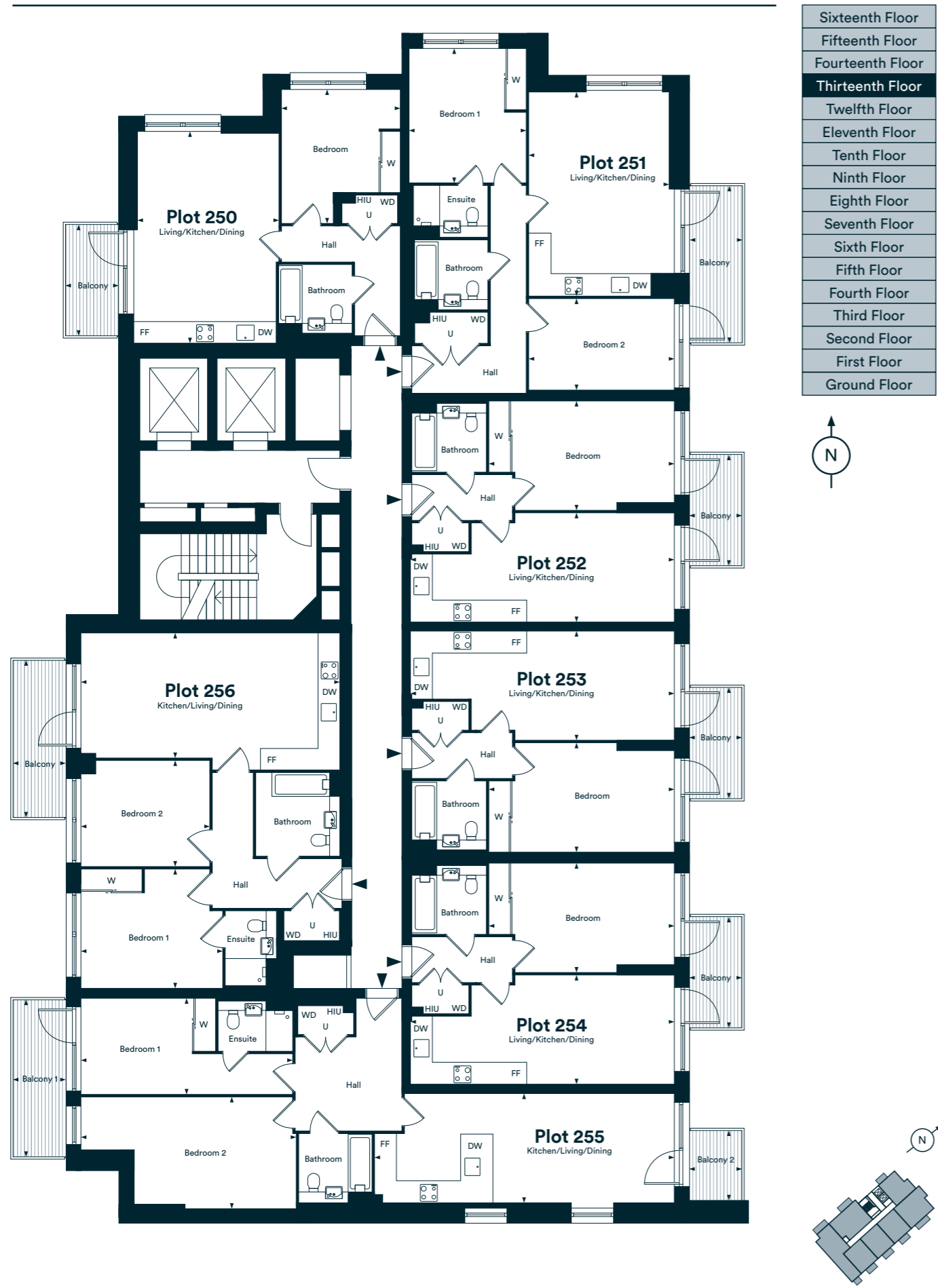
Living/Kitchen/Dining	3.70m x 7.65m	12'1" x 25'1"
Bedroom 1	3.50m x 4.20m	11'6" x 13'9"
Bedroom 2	3.10m x 3.80m	10'2" x 12'5"
<b>Total Internal Area</b>	<b>79m<sup>2</sup></b>	<b>845ft<sup>2</sup></b>
Balcony	7m <sup>2</sup>	75.3ft <sup>2</sup>

FF - Fridge/Freezer | DW - Dishwasher | W - Wardrobe | C - Cupboard  
 U - Utility Room | WD - Washer/Dryer | HIU - Heat Interface Unit

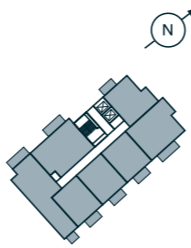
The floor plans provided are intended to only give a general indication of the proposed floor layout, are not drawn to scale and are not intended to form part of any offer, contract, warranty or representation. Measurements are given to the widest point, are approximate and are given as a guide only. They must not be relied upon as a statement or representation of fact. Do not use these measurements for carpet sizes, appliance spaces or items of furniture. Kitchen, bathroom and utility layouts may differ to build, and specific plot sizes and layouts may vary within the same unit type. Built-in wardrobe to include mirrored sliding doors, shelf and chrome hanging rail. For further clarification regarding specific individual plots, please ask our Sales Associates.

# Thirteenth Floor

Plots 250, 251, 252, 253, 254, 255 & 256



Sixteenth Floor
Fifteenth Floor
Fourteenth Floor
<b>Thirteenth Floor</b>
Twelfth Floor
Eleventh Floor
Tenth Floor
Ninth Floor
Eighth Floor
Seventh Floor
Sixth Floor
Fifth Floor
Fourth Floor
Third Floor
Second Floor
First Floor
Ground Floor



## Plot 250 - 1 Bedroom Apartment

Living/Kitchen/Dining	4.20m x 6.25m	13'9" x 20'6"
Bedroom	3.50m x 3.95m	11'6" x 12'11"
<b>Total Internal Area</b>	<b>53m<sup>2</sup></b>	<b>574ft<sup>2</sup></b>
Balcony	5m <sup>2</sup>	53.8ft <sup>2</sup>

## Plot 251 - 2 Bedroom Apartment

Living/Kitchen/Dining	4.15m x 6.00m	13'7" x 19'9"
Bedroom 1	3.45m x 3.95m	11'4" x 12'11"
Bedroom 2	4.30m x 2.70m	14'0" x 8'10"
<b>Total Internal Area</b>	<b>74m<sup>2</sup></b>	<b>792ft<sup>2</sup></b>
Balcony	7m <sup>2</sup>	75.3ft <sup>2</sup>

## Plots 252, 253 & 254 - 1 Bedroom Apartment

Living/Kitchen/Dining	7.70m x 3.20m	25'3" x 10'7"
Bedroom	3.25m x 5.45m	10'7" x 17'11"
<b>Total Internal Area</b>	<b>51m<sup>2</sup></b>	<b>544ft<sup>2</sup></b>
Balcony	5m <sup>2</sup>	53.8ft <sup>2</sup>

## Plot 255 - 2 Bedroom Apartment

Living/Kitchen/Dining	8.85m x 3.25m	29'1" x 10'7"
Bedroom 1	6.25m x 2.85m	20'6" x 9'4"
Bedroom 2	6.35m x 3.30m	20'11" x 10'9"
<b>Total Internal Area</b>	<b>84m<sup>2</sup></b>	<b>900ft<sup>2</sup></b>
Balcony 1	3.1m <sup>2</sup>	34.7ft <sup>2</sup>
Balcony 2	7.2m <sup>2</sup>	77.5ft <sup>2</sup>

## Plot 256 - 2 Bedroom Apartment

Living/Kitchen/Dining	3.70m x 7.65m	12'1" x 25'1"
Bedroom 1	3.50m x 4.20m	11'6" x 13'9"
Bedroom 2	3.10m x 3.80m	10'2" x 12'5"
<b>Total Internal Area</b>	<b>79m<sup>2</sup></b>	<b>845ft<sup>2</sup></b>
Balcony	7m <sup>2</sup>	75.3ft <sup>2</sup>

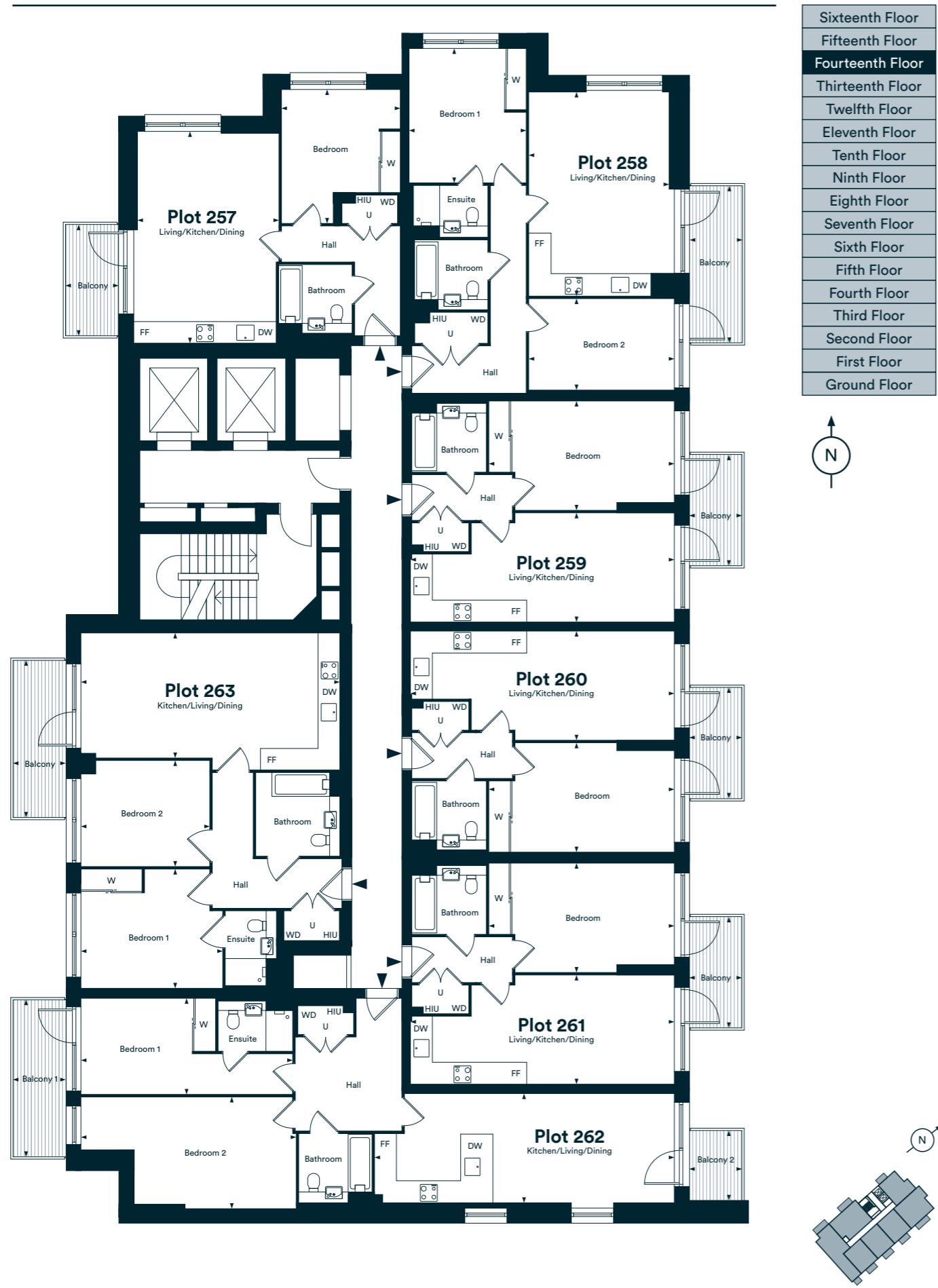
FF - Fridge/Freezer | DW - Dishwasher | W - Wardrobe | C - Cupboard  
 U - Utility Room | WD - Washer/Dryer | HIU - Heat Interface Unit

The floor plans provided are intended to only give a general indication of the proposed floor layout, are not drawn to scale and are not intended to form part of any offer, contract, warranty or representation. Measurements are given to the widest point, are approximate and are given as a guide only. They must not be relied upon as a statement or representation of fact. Do not use these measurements for carpet sizes, appliance spaces or items of furniture. Kitchen, bathroom and utility layouts may differ to build, and specific plot sizes and layouts may vary within the same unit type. Built-in wardrobe to include mirrored sliding doors, shelf and chrome hanging rail. For further clarification regarding specific individual plots, please ask our Sales Associates.

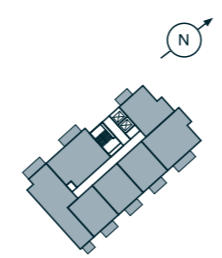


# Fourteenth Floor

Plots 257, 258, 259, 260, 261, 262 & 263



Sixteenth Floor
Fifteenth Floor
<b>Fourteenth Floor</b>
Thirteenth Floor
Twelfth Floor
Eleventh Floor
Tenth Floor
Ninth Floor
Eighth Floor
Seventh Floor
Sixth Floor
Fifth Floor
Fourth Floor
Third Floor
Second Floor
First Floor
Ground Floor



## Plot 257 - 1 Bedroom Apartment

Living/Kitchen/Dining	4.20m x 6.25m	13'9" x 20'6"
Bedroom	3.50m x 3.95m	11'6" x 12'11"
<b>Total Internal Area</b>	<b>53m<sup>2</sup></b>	<b>574ft<sup>2</sup></b>
Balcony	5m <sup>2</sup>	53.8ft <sup>2</sup>

## Plot 258 - 2 Bedroom Apartment

Living/Kitchen/Dining	4.15m x 6.00m	13'7" x 19'9"
Bedroom 1	3.45m x 3.95m	11'4" x 12'11"
Bedroom 2	4.30m x 2.70m	14'0" x 8'10"
<b>Total Internal Area</b>	<b>74m<sup>2</sup></b>	<b>792ft<sup>2</sup></b>
Balcony	7m <sup>2</sup>	75.3ft <sup>2</sup>

## Plots 259, 260 & 261 - 1 Bedroom Apartment

Living/Kitchen/Dining	7.70m x 3.20m	25'3" x 10'7"
Bedroom	3.25m x 5.45m	10'7" x 17'11"
<b>Total Internal Area</b>	<b>51m<sup>2</sup></b>	<b>544ft<sup>2</sup></b>
Balcony	5m <sup>2</sup>	53.8ft <sup>2</sup>

## Plot 262 - 2 Bedroom Apartment

Living/Kitchen/Dining	8.85m x 3.25m	29'1" x 10'7"
Bedroom 1	6.25m x 2.85m	20'6" x 9'4"
Bedroom 2	6.35m x 3.30m	20'11" x 10'9"
<b>Total Internal Area</b>	<b>84m<sup>2</sup></b>	<b>900ft<sup>2</sup></b>
Balcony 1	3.1m <sup>2</sup>	34.7ft <sup>2</sup>
Balcony 2	7.2m <sup>2</sup>	77.5ft <sup>2</sup>

## Plot 263 - 2 Bedroom Apartment

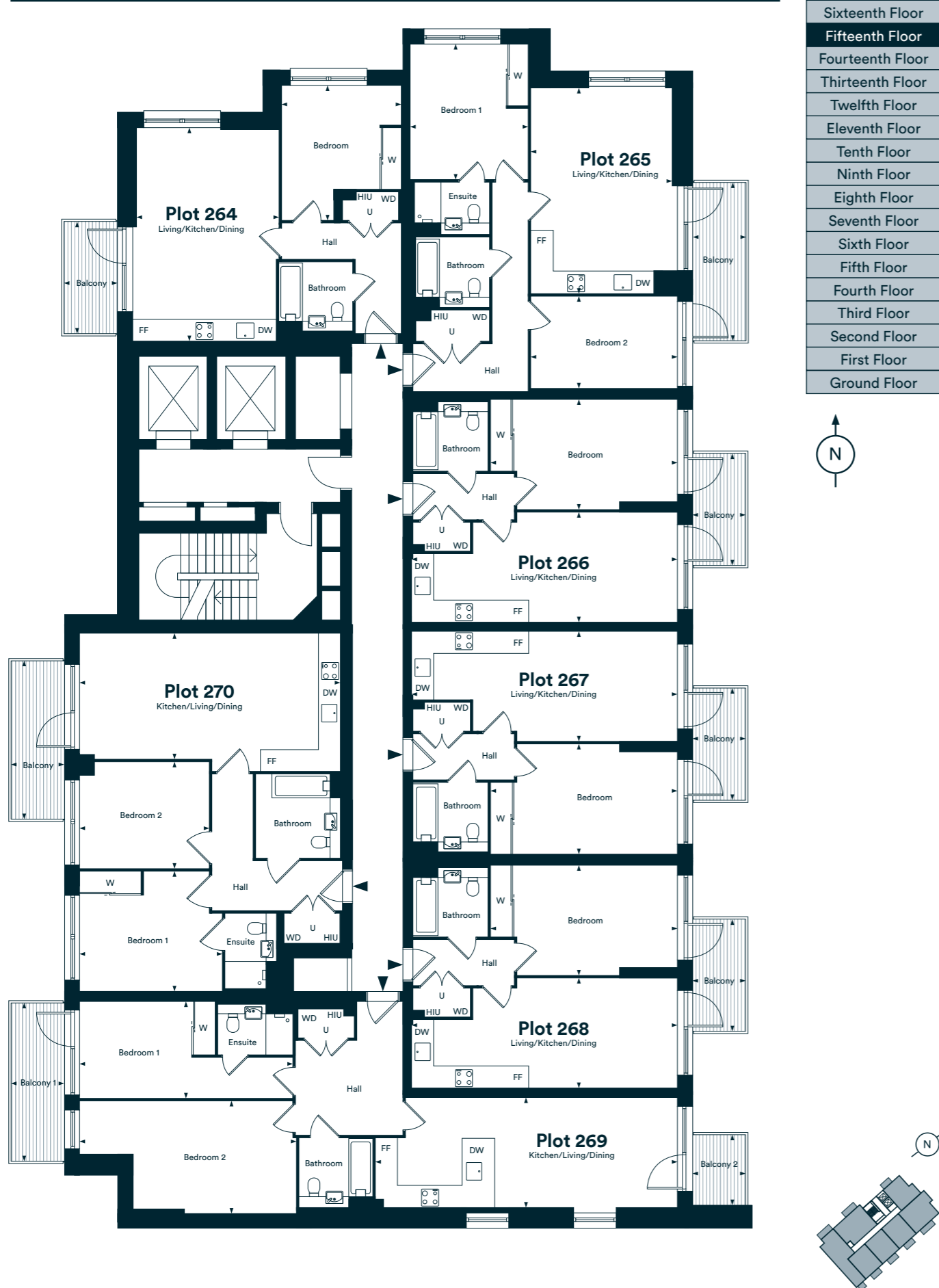
Living/Kitchen/Dining	3.70m x 7.65m	12'1" x 25'1"
Bedroom 1	3.50m x 4.20m	11'6" x 13'9"
Bedroom 2	3.10m x 3.80m	10'2" x 12'5"
<b>Total Internal Area</b>	<b>79m<sup>2</sup></b>	<b>845ft<sup>2</sup></b>
Balcony	7m <sup>2</sup>	75.3ft <sup>2</sup>

FF - Fridge/Freezer | DW - Dishwasher | W - Wardrobe | C - Cupboard  
 U - Utility Room | WD - Washer/Dryer | HIU - Heat Interface Unit

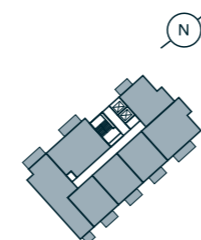
The floor plans provided are intended to only give a general indication of the proposed floor layout, are not drawn to scale and are not intended to form part of any offer, contract, warranty or representation. Measurements are given to the widest point, are approximate and are given as a guide only. They must not be relied upon as a statement or representation of fact. Do not use these measurements for carpet sizes, appliance spaces or items of furniture. Kitchen, bathroom and utility layouts may differ to build, and specific plot sizes and layouts may vary within the same unit type. Built-in wardrobe to include mirrored sliding doors, shelf and chrome hanging rail. For further clarification regarding specific individual plots, please ask our Sales Associates.

# Fifteenth Floor

Plots 264, 265, 266, 267, 268, 269 & 270



Sixteenth Floor
<b>Fifteenth Floor</b>
Fourteenth Floor
Thirteenth Floor
Twelfth Floor
Eleventh Floor
Tenth Floor
Ninth Floor
Eighth Floor
Seventh Floor
Sixth Floor
Fifth Floor
Fourth Floor
Third Floor
Second Floor
First Floor
Ground Floor



## Plot 264 - 1 Bedroom Apartment

Living/Kitchen/Dining	4.20m x 6.25m	13'9" x 20'6"
Bedroom	3.50m x 3.95m	11'6" x 12'11"
<b>Total Internal Area</b>	<b>53m<sup>2</sup></b>	<b>574ft<sup>2</sup></b>
Balcony	5m <sup>2</sup>	53.8ft <sup>2</sup>

## Plot 265 - 2 Bedroom Apartment

Living/Kitchen/Dining	4.15m x 6.00m	13'7" x 19'9"
Bedroom 1	3.45m x 3.95m	11'4" x 12'11"
Bedroom 2	4.30m x 2.70m	14'0" x 8'10"
<b>Total Internal Area</b>	<b>74m<sup>2</sup></b>	<b>792ft<sup>2</sup></b>
Balcony	7m <sup>2</sup>	75.3ft <sup>2</sup>

## Plots 266, 267 & 268 - 1 Bedroom Apartment

Living/Kitchen/Dining	7.70m x 3.20m	25'3" x 10'7"
Bedroom	3.25m x 5.45m	10'7" x 17'11"
<b>Total Internal Area</b>	<b>51m<sup>2</sup></b>	<b>544ft<sup>2</sup></b>
Balcony	5m <sup>2</sup>	53.8ft <sup>2</sup>

## Plot 269 - 2 Bedroom Apartment

Living/Kitchen/Dining	8.85m x 3.25m	29'1" x 10'7"
Bedroom 1	6.25m x 2.85m	20'6" x 9'4"
Bedroom 2	6.35m x 3.30m	20'11" x 10'9"
<b>Total Internal Area</b>	<b>84m<sup>2</sup></b>	<b>900ft<sup>2</sup></b>
Balcony 1	3.1m <sup>2</sup>	34.7ft <sup>2</sup>
Balcony 2	7.2m <sup>2</sup>	77.5ft <sup>2</sup>

## Plot 270 - 2 Bedroom Apartment

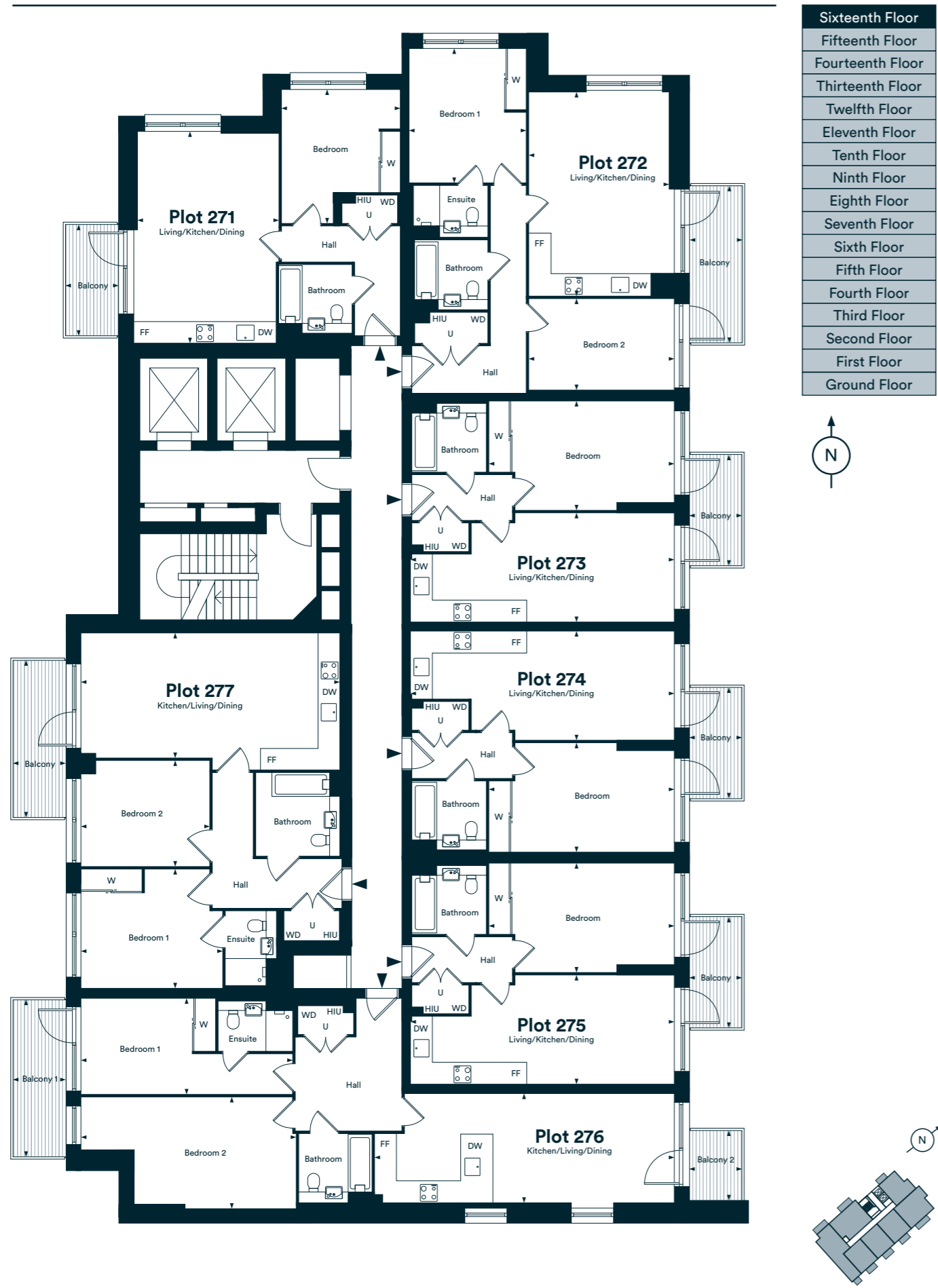
Living/Kitchen/Dining	3.70m x 7.65m	12'1" x 25'1"
Bedroom 1	3.50m x 4.20m	11'6" x 13'9"
Bedroom 2	3.10m x 3.80m	10'2" x 12'5"
<b>Total Internal Area</b>	<b>79m<sup>2</sup></b>	<b>845ft<sup>2</sup></b>
Balcony	7m <sup>2</sup>	75.3ft <sup>2</sup>

FF - Fridge/Freezer | DW - Dishwasher | W - Wardrobe | C - Cupboard  
 U - Utility Room | WD - Washer/Dryer | HIU - Heat Interface Unit

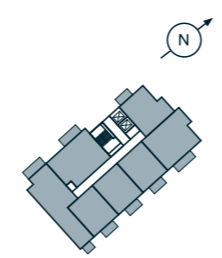
The floor plans provided are intended to only give a general indication of the proposed floor layout, are not drawn to scale and are not intended to form part of any offer, contract, warranty or representation. Measurements are given to the widest point, are approximate and are given as a guide only. They must not be relied upon as a statement or representation of fact. Do not use these measurements for carpet sizes, appliance spaces or items of furniture. Kitchen, bathroom and utility layouts may differ to build, and specific plot sizes and layouts may vary within the same unit type. Built-in wardrobe to include mirrored sliding doors, shelf and chrome hanging rail. For further clarification regarding specific individual plots, please ask our Sales Associates.

# Sixteenth Floor

Plots 271, 272, 273, 274, 275, 276 & 277



Sixteenth Floor
Fifteenth Floor
Fourteenth Floor
Thirteenth Floor
Twelfth Floor
Eleventh Floor
Tenth Floor
Ninth Floor
Eighth Floor
Seventh Floor
Sixth Floor
Fifth Floor
Fourth Floor
Third Floor
Second Floor
First Floor
Ground Floor



## Plot 271 - 1 Bedroom Apartment

Living/Kitchen/Dining	4.20m x 6.25m	13'9" x 20'6"
Bedroom	3.50m x 3.95m	11'6" x 12'11"
<b>Total Internal Area</b>	<b>53m<sup>2</sup></b>	<b>574ft<sup>2</sup></b>
Balcony	5m <sup>2</sup>	53.8ft <sup>2</sup>

## Plot 272 - 2 Bedroom Apartment

Living/Kitchen/Dining	4.15m x 6.00m	13'7" x 19'9"
Bedroom 1	3.45m x 3.95m	11'4" x 12'11"
Bedroom 2	4.30m x 2.70m	14'0" x 8'10"
<b>Total Internal Area</b>	<b>74m<sup>2</sup></b>	<b>792ft<sup>2</sup></b>
Balcony	7m <sup>2</sup>	75.3ft <sup>2</sup>

## Plots 273, 274 & 275 - 1 Bedroom Apartment

Living/Kitchen/Dining	7.70m x 3.20m	25'3" x 10'7"
Bedroom	3.25m x 5.45m	10'7" x 17'11"
<b>Total Internal Area</b>	<b>51m<sup>2</sup></b>	<b>544ft<sup>2</sup></b>
Balcony	5m <sup>2</sup>	53.8ft <sup>2</sup>

## Plot 276 - 2 Bedroom Apartment

Living/Kitchen/Dining	8.85m x 3.25m	29'1" x 10'7"
Bedroom 1	6.25m x 2.85m	20'6" x 9'4"
Bedroom 2	6.35m x 3.30m	20'11" x 10'9"
<b>Total Internal Area</b>	<b>84m<sup>2</sup></b>	<b>900ft<sup>2</sup></b>
Balcony 1	3.1m <sup>2</sup>	34.7ft <sup>2</sup>
Balcony 2	7.2m <sup>2</sup>	77.5ft <sup>2</sup>

## Plot 277 - 2 Bedroom Apartment

Living/Kitchen/Dining	3.70m x 7.65m	12'1" x 25'1"
Bedroom 1	3.50m x 4.20m	11'6" x 13'9"
Bedroom 2	3.10m x 3.80m	10'2" x 12'5"
<b>Total Internal Area</b>	<b>79m<sup>2</sup></b>	<b>845ft<sup>2</sup></b>
Balcony	7m <sup>2</sup>	75.3ft <sup>2</sup>

FF - Fridge/Freezer | DW - Dishwasher | W - Wardrobe | C - Cupboard  
 U - Utility Room | WD - Washer/Dryer | HIU - Heat Interface Unit

The floor plans provided are intended to only give a general indication of the proposed floor layout, are not drawn to scale and are not intended to form part of any offer, contract, warranty or representation. Measurements are given to the widest point, are approximate and are given as a guide only. They must not be relied upon as a statement or representation of fact. Do not use these measurements for carpet sizes, appliance spaces or items of furniture. Kitchen, bathroom and utility layouts may differ to build, and specific plot sizes and layouts may vary within the same unit type. Built-in wardrobe to include mirrored sliding doors, shelf and chrome hanging rail. For further clarification regarding specific individual plots, please ask our Sales Associates.

# We're here and ready to help

When you're ready to move in, L&Q will give you a personal introduction to your new L&Q home.

**The L&Q new homes warranty**  
We will demonstrate how to operate your appliances and heating and talk you through any special features, all of which will be detailed in your Home User Guide.

We are confident that you will be delighted with your new L&Q home, but for added peace of mind, all of our homes also come with an L&Q new homes warranty.

This lasts for two years from the date of legal completion. For the 2-year period, we guarantee items supplied as part of your new home, covering repairs needed due to faulty workmanship or materials. The NHBC Buildmark cover is valid for 12 years from the date the building was finished.

Your sales negotiator can provide you with more details on the L&Q warranty and NHBC Buildmark cover. You can also access the full terms and conditions on our website: [lqgroup.org.uk](http://lqgroup.org.uk)



## A selection of other L&Q developments



**Barking Riverside**  
Barking, London  
[lqhomes.com/barkingriverside](http://lqhomes.com/barkingriverside)



**L&Q at Kidbrooke Village**  
Greenwich, London  
[lqhomes.com/kidbrookevillage](http://lqhomes.com/kidbrookevillage)



**Prime Point**  
Greenwich, London  
[lqhomes.com/primepoint](http://lqhomes.com/primepoint)

### Disclaimer

All information in this document is correct at the time of publication and is subject to change. Computer (or other advanced technology) generated images are for illustrative purposes only and dimensions are not intended to form part of any contract or warranty. Individual features such as windows, bricks and other material colours may vary, as may heating and electrical layouts. Images provided of the proposed development do not show final details of gradients of land, boundary treatments, local authority street lighting or landscaping.

Registered office: L&Q, 29-35 West Ham Lane, Stratford, London E15 4PH. Homes & Communities Agency L4517. Registered Society 30441R Exempt charity. Your home is at risk if you fail to keep up repayments on a mortgage, rent or other loan secured on it. Please make sure you can afford the repayments before you take out a mortgage.

The logo consists of the letters 'L' and 'Q' in a bold, sans-serif font, with an ampersand between them. The logo is white and is positioned on a yellow rectangular background.

Kew Bridge Rise  
Brentford, TW8 0EX

© [kewbridgerise@lqgroup.org.uk](mailto:kewbridgerise@lqgroup.org.uk)

☎ 020 8189 0423

🌐 [lqhomes.com/kewbridgerise](http://lqhomes.com/kewbridgerise)